

Video

<https://www.youtube.com/watch?v=YAer4rDnA6I>



University of California

Agriculture and Natural Resources

■ UCCE Master Gardener Program

Bringing Birds to your Garden

Gail Fulbeck

Pat Trimble

UCCE Master Gardeners

El Dorado County



University of California

Agriculture and Natural Resources

■ UCCE Master Gardener Program

Thank you to.... Today's Zoom Host!

- Tracy Celio



- Community Education Specialist



University of California

Agriculture and Natural Resources

UCCE Master Gardener Program



Birds need....



Food

Water

Shelter (cover)





Plants as Food



- Start with natives
- Flowers, fruits, and seeds
- Co-evolution



Toyon

Heteromeles arbutifolia



Black elderberry
Sambucus nigra



Black elderberry
Sambucus nigra



Valley Elderberry Longhorn Beetle

Desmocerus californicus dimorphus

- Associated with host plant *Sambucus nigra* all life stages (mutualism)
- Foraging activities of adults help dislodge and transfer pollen
- American River Parkway, urban riparian forest (90% has been lost to development)
- VELB listed as federally Threatened in 1980

Valley Elderberry Longhorn Beetle



VELB

Black elderberry
Sambucus nigra



Phainopepla



Pink flowering currant
Ribes sanguineum



Manzanita
Arctostaphylos





Serviceberry
Amelanchier alnifolia



Spotted Towhee



California Towhee





California Quail



Black Oak
Quercus kelloggii





Black Oak
Quercus kelloggii





White-breasted Nuthatch



Red-breasted Nuthatch





Blue Oak
Quercus douglasii



Blue Oak
Quercus douglasii





Interior Live Oak
Quercus wislizenii



Bullock's Oriole

Bullock's Oriole Female



Western Tanager



Western Tanager
Female





Salal
Gaultheria shallon

California Coffeeberry

Frangula californica



Below:

Sierra mountain lilac
Ceanothus cuneatus



Above:

Holly Leaf Mountain
Lilac
Ceanothus "Blue
Jeans"

Deer Resistant

California lilac

Ceanothus “Ray Hartman”



Saint Catherine's Lace
Eriogonum giganteum





Catalina Currant
Ribes viburnifolium





Wild ginger

Asarum canadense



– Woodland strawberry

Wild grape



Sulphur buckwheat
Eriogonum umbellatum





Salvia-
Sage



Sages

Only bees of right weight can push into the flower to reach nectar

Causes anthers to bend down and dust pollen on bee

Or stigma to bend & touch pollen on bee's back



Sonoma Sage-

Salvia sonomensis





White-crowned
Sparrow



Anna's Hummingbird





Rufous Hummingbird



Black-chinned Hummingbird

Insects

- Birds rely heavily on insects to feed young



96% of
terrestrial
bird
species
rear their
young on
insects



Babies want bugs!



Junco

Non-Bee Insect Pollinators



Flower flies



Ants



beetles



Butterflies



Mosquitoes



Moths



Wasps



Native *Prunus* = 456
species of caterpillars

Plant Choice = White Oak

Banded tussock moth	4
Nason's slug	2
Pear slugs	104
Bagworms	3
Leaf-tip rollers	21
Yellow-necked caterpillar eggs	80
Yellow-necked caterpillars	115
Pyralid leaf rollers	4
Saddled prominent	3
Tortricid leaf tiers	34
Leaf miners	12
Geometrid inch worm	1
Bucculatrix ainsliella	1
Midrib webber	5
White-dotted prominent	2
Double-lined prominent	2
Douglasiidae	1
Lepidoptera eggs	12
Leaf folders	4

410 caterpillars
19 species



Plant Choice = Black Cherry

239 caterpillars
14 Species

Pear slugs	12
Saddleback caterpillar	1
Leaf-tier	1
Tent caterpillar eggs	175
Tenthredinid sawfly	1
Bucculatrix pomifoliella	8
Leaf –folder	3
Tufted bird dropping moth	2
Ugly nest caterpillar	13
Leaf miners	16
Large Pyralid	1
Acleris variegata	1
Bagworm	1
Leaf-roller	4



Plant Choice = Bradford Pear

Geometrid inchworm 1

1 Caterpillar
1 Species



Supplemental Feeding

- Sometimes plants can't provide enough food
- Feeders can be used to supplement the natural food you provide through plants





Project FeederWatch

HOME

ABOUT

LEARN

COMMUNITY

EXPLORE

YOUR DATA

Embrace the

WINTER.

*— * Count Feeder Birds for * —*

SCIENCE!

If you feed birds in the winter, consider joining Project Feederwatch and contribute Data to help monitor bird population trends.







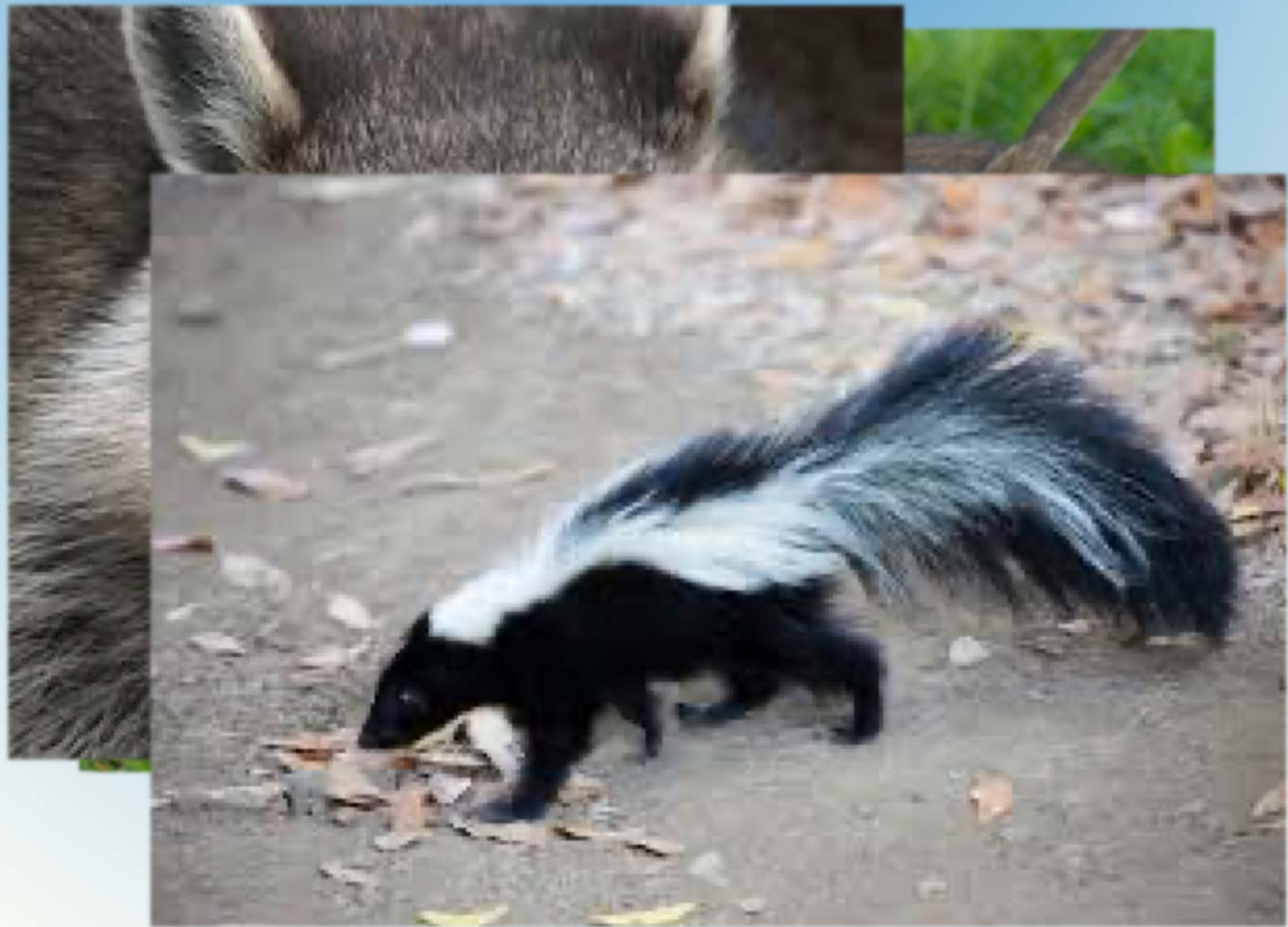
Suet

- High energy food source for winter
- Woodpeckers, nuthatches, chickadees, titmice and hawks
- Feed only from October - April or May



Unexpected Consequences?



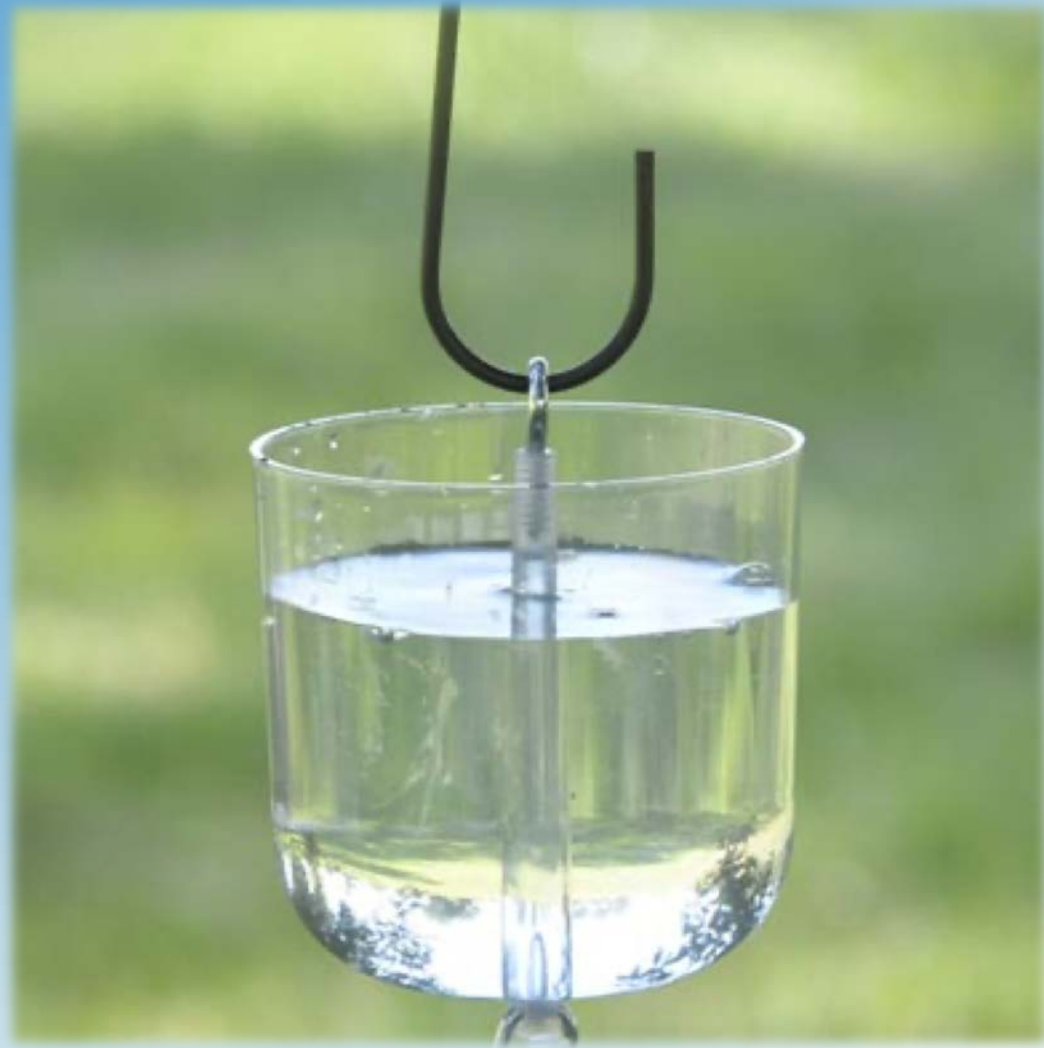




Nectar Feeders



Nectar Protector



Unexpected Consequences?



(c) Kathy Keatley Garvey

Butterfly Feeders



Fermented Nectar....



Water



Photo ©Katby Miller



Birds Love Water

<https://www.youtube.com/watch?v=YAer4rDnA6I>





Butterflies Love Water



Puddling station



Shelter



Cover

- Start with native plants
- Think diversity and layers



















Rock Outcroppings









Yarrow



Sticky monkeyflower



Lupine



Linum-
western blue
flax



Douglas
Iris



Erythranthe
cardinalis

© 2003 Heperenstance Garden



Mock Orange
Philadelphus lewisii
Ssp. californicus 'Covelo'



Western Columbine
Aquilegia formosa

- Spice bush
- *Calycanthus occidentalis*





Seven Tips for Landscaping for Birds



- 1. Provide Water**
- 2. Plant Native Vegetation**
- 3. Manage Pets**
- 4. Reduce Pesticide Use**



5. **Limit the Amount of Lawn**
6. **Increase Vertical Layering**
7. **Provide Snags, Brush Piles, Rock Piles**



UC Davis Arboretum **All-Stars**

- 100 tough reliable plants
- Easy to grow
- Low water use
- Few pest/disease problems
- Outstanding garden qualities
- About 1/3 are California natives



UC Davis Arboretum

California Native Plant Garden



Sherwood Demonstration Garden

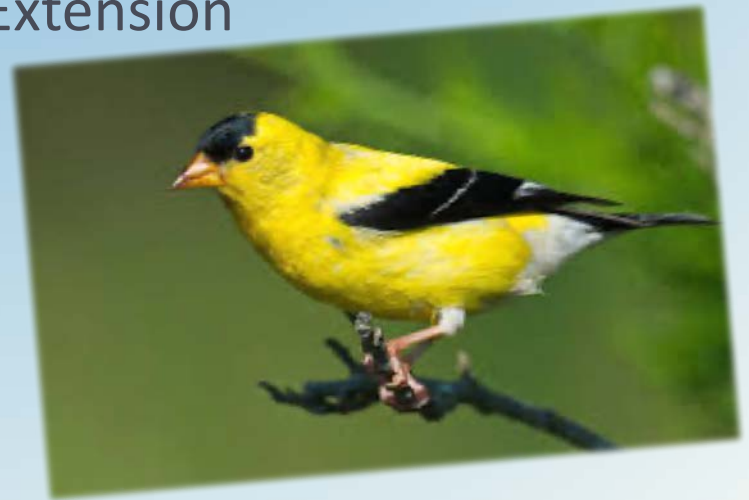
Next to Folsom
Lake College,
Placerville



©DIANNE MARIE ANDRE

Resources

- UCCE Central Sierra
 - <http://ucanr.org/smartlandscape>
- Cornell Lab of Ornithology
 - www.birds.cornell.edu
- Backyard Bird Problems
 - http://library.fws.gov/Bird_Publications/prob.html
- University of Maine Cooperative Extension
 - <http://extension.umaine.edu>
- National Wildlife Federation
 - www.nwf.org
- National Audubon Society
 - www.audubon.org



Resources

- University of California Butterfly Site
 - <http://butterfly.ucdavis.edu/>
- Pollinator Partnership
 - <http://pollinator.org>
- Sherwood Demonstration Garden
 - http://mgeldorado.ucanr.edu/Demonstration_Garden/
- UC Davis Arboretum
 - Arboretum.ucdavis.edu/
- CalFlora
 - <http://www.calflora.org/>



Resources

- Wildlife Habitat certification
 - [Http://nwf.org/Garden-for-Wildlife/Create](http://nwf.org/Garden-for-Wildlife/Create)
- Las Pilitas Bird Gardening Plant List
 - <http://www.laspilitas.com/bird.htm>
- CalScape
 - <https://calscape.org/>
- Natl Audubon Society



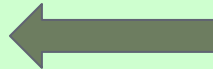
House Wren by Karen E. Brown

Welcome!



- CNPS Redbud Chapter
- *Welcome*
- [Field Trips](#)
- [Newsletters](#)
- [Local Floras](#)
- [Natives for Landscaping](#)
- [Grant Information](#)
- [Book Plant Name Updates](#)
- [Photo Gallery](#)
- [Other Links](#)

- [About Our Chapter](#)
- [Board of Directors](#)
- [How to Join Redbud-](#)
- [CNPS](#)
- [Bylaws](#)
- [Job Descriptions](#)
- [How to Reach Us](#)



Karen Callahan

THE REDBUD CHAPTER OF NEVADA AND PLACER COUNTIES

If you want to be informed about Redbud activities consider joining the listserv below:



[Click to join redbudchapter](#)

Placer and Nevada Counties are located on the western slope of the Sierra Nevada mountain range between Sacramento and Lake Tahoe. Although these two counties represent only 1.5% of the land mass of California, its vascular plants are found here. Our native plants grace the landscape in habitats from the Sacramento v grasslands, through the foothills, and into the high peaks of the Sierra Nevada mountain range. This land represents a large variation in elevation, rainfall, and temperature. The snowmelt from the rugged peaks feed the Yuba, Bear, American and Rubicon Rivers with water to support the more populous areas of the state

Plant Name:

Search by Name

Type: Tree Shrub Groundcover Vine Perennial

Size: Small Medium Large

Exposure: Full Sun Part Shade Shade

California Native

[\[reset\]](#)

[\[show/hide more criteria\]](#)

Search by Criteria



***Ceanothus maritimus* 'Valley Violet'** - valley violet maritime ceanothus California native plant; best small ceanothus for Central Valley gardens; clusters of dark-violet flowers bloom in spring; attracts beneficial insects.
[More Details](#)



Salvia apiana - California white sage California native plant; spring flowers attract pollinating bees; leaves contain fragrant oils.
[More Details](#)



***Salvia clevelandii* 'Winnifred Gilman'** - Winnifred Gilman Cleveland sage California native plant; evergreen shrub produces maroon-stemmed, blue-violet flowers; heat and drought tolerant; attracts hummingbirds, butterflies and beneficial insects.
[More Details](#)



Viguiera parishii - desert goldeneye California native plant; golden daisies blossom from early spring until mid-fall among triangular-shaped green leaves; tolerates full sun or part shade and is low maintenance.
[More Details](#)

EDUCATION & RESEARCH

GATEWAYS PROJECT

SUPPORT VOLUNTEER

California Native Garden

Low Maintenance Garden

Wildlife Attracting Garden

All-Stars Plant Search

Plant Sales/ Nursery

Gardening Reference

Resources

ABOUT US

CALENDAR

ARBORETUM ALL-STARS

MEMBERSHIP

NEWS



The granddaddy of online plant selection

tools

Calflora

information on **wild California plants** for conservation, education, and appreciation

My Calflora

My Observations

What Grows Here?

Observation Hotline

Great Places

donate

News

About Calflora

Add Observations

Phone Applications

Weed Manager

NRCS eVegGuide

Search for Plants

SEARCH

CLEAR

HELP

Common Names A B C D E F G H I J K L M N O P Q R S

Scientific Names A B C D E F G H I J K L M N O P Q R S T U V W X Y Z

Family Names A B C D E F G H I J K L M N O P Q R S T U V W X Y Z

plant name

NAME WIZARD

Enter part of a name: common scientific or FAMILY
poppy Papaver POACEAE

county

duration Annual
 Perennial
 Biennial

lifeform Grasslike Tree
 Herb Fern
 Shrub Vine

status Native to California CNPS rare plants
 Not native to California Affinity to serpentine soil
 Cal-IPC invasive plants

community
Alkali Sink
Alpine Fell-fields
Bristle-cone Pine Forest
Chaparral
Closed-cone Pine Forest

category Monocot
 Dicot
 Gymnosperm
 Pteridophyte

result format

more ...

Order by

- any
- Alameda
- Alpine
- Amador
- Butte
- Calaveras
- Contra Costa
- Colusa
- Del Norte
- El Dorado
- Fresno
- Glenn
- Humboldt
- Imperial
- Inyo
- Kings
- Kern
- Lake
- Lassen
- Los Angeles
- Madera
- Marin
- Mariposa
- Mendocino
- Merced
- Mono
- Monterey
- Modoc
- Napa
- Nevada
- Orange
- Placer

native

Perennial herb

LILIACEAE



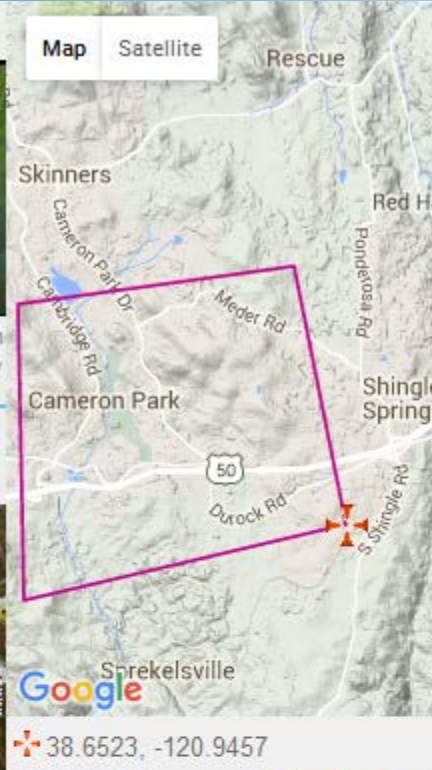
2001 Jeff Abbas



2003 Michael Charters



Jo-Ann Ordan
Academy



Calochortus superbus *Yellow mariposa*

1 record (1 CCH)

native

Perennial herb

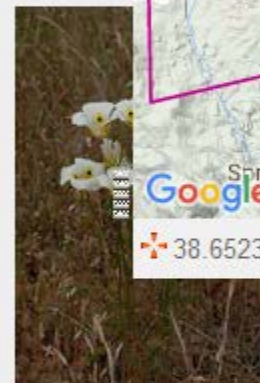
LILIACEAE



2007 Carol W. Witham



2010 Barry Breckling



2010 Dee E. Warenycia



Calycadenia multiglandulosa *Rosin weed*

3 records (2 CCH)

native

Annual herb

ASTERACEAE



2008 Dee E. Warenycia



2009 Neal Kramer



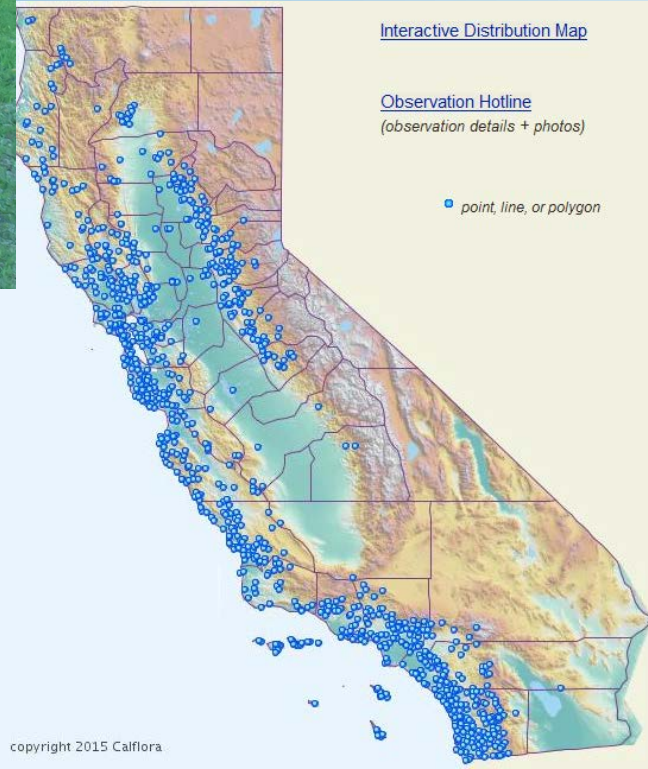
2009 Neal Kramer





Toyon

Heteromeles arbutifolia



<https://www.nwf.org/Garden-for-Wildlife/Certify>



National Wildlife Federation's **GARDEN FOR WILDLIFE™**

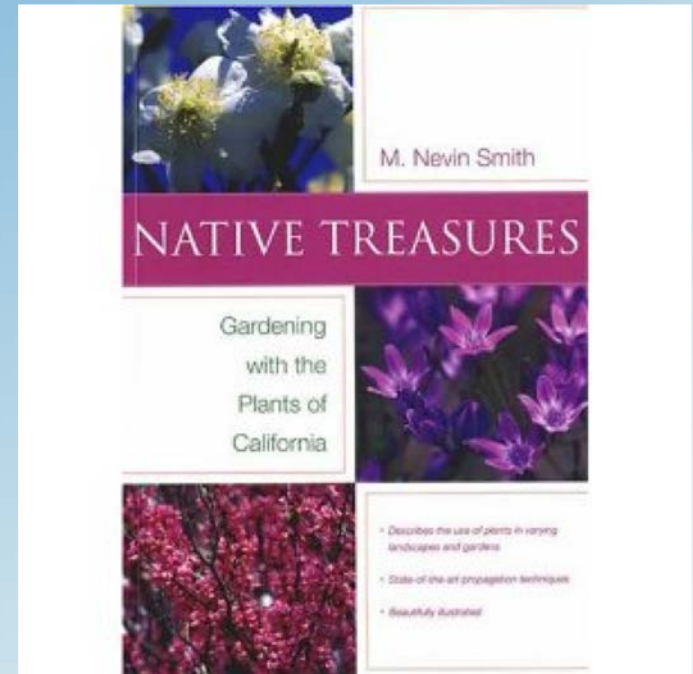
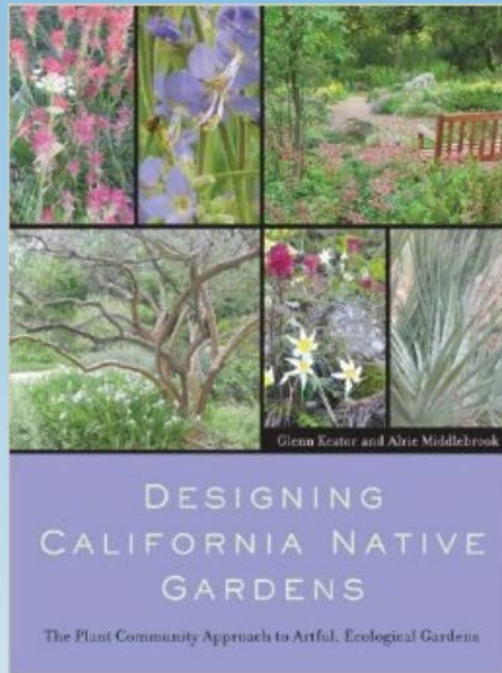
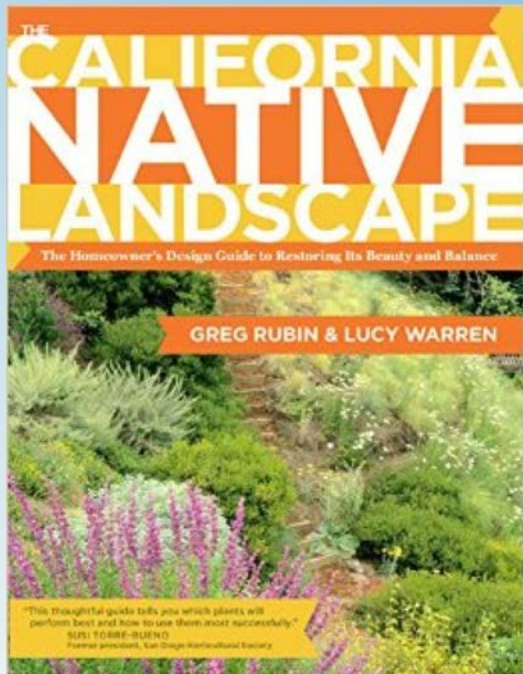
Garden Certification Walk-through Checklist

It's easier than you think to create your own wildlife garden! Use this walk-through checklist to confirm you have all the elements necessary to be certified:

***Note:** this checklist is only a tool to prepare your garden, please certify online at www.nwf.org/certifiedwildlifehabitat

FOOD: Your habitat needs three of the following types of plants or supplemental feeders:

- | | | | |
|---|---------------------------------|---|---|
| <input type="checkbox"/> Seeds from a plant | <input type="checkbox"/> Fruits | <input type="checkbox"/> Bird Feeder | <input type="checkbox"/> Butterfly Feeder |
| <input type="checkbox"/> Berries | <input type="checkbox"/> Sap | <input type="checkbox"/> Squirrel Feeder | <input type="checkbox"/> Nuts |
| <input type="checkbox"/> Nectar | <input type="checkbox"/> Pollen | <input type="checkbox"/> Hummingbird Feeder | |
| <input type="checkbox"/> Foliage/Twigs | <input type="checkbox"/> Suet | | |



Questions?



UCCE

El Dorado Master Gardeners

Contact us:

530-621-5512 (Tues-Fri 9:00AM-Noon)

mgeldorado@ucdavis.edu

Visit us at 311 Fairlane, Placerville



University of California

Agriculture and Natural Resources

■ UCCE Master Gardener Program