

# PrimeArk 45 in Ventura County



Feb 2012, 1st production year

**3 tipping times (45 cm from ground) at the ends of April, May and July**

**3 mowing times: Dec 1, Feb 1 and March 4.**



# PrimeArk 45 at UC Hansen REC

- Planted in October 2011 – small plugs
- Only pre-plant fertilizer: 500lbs 18-6-13
- Non-fumigated soil, no pesticides used in-season
- Posts and string for support
- Harvested by Master Gardener crew weekly

May 1 , after 1<sup>st</sup> tipping



June 1 , 2d tipping



July 25 , 3d tipping

New shoots appear 2-3 weeks after tipping



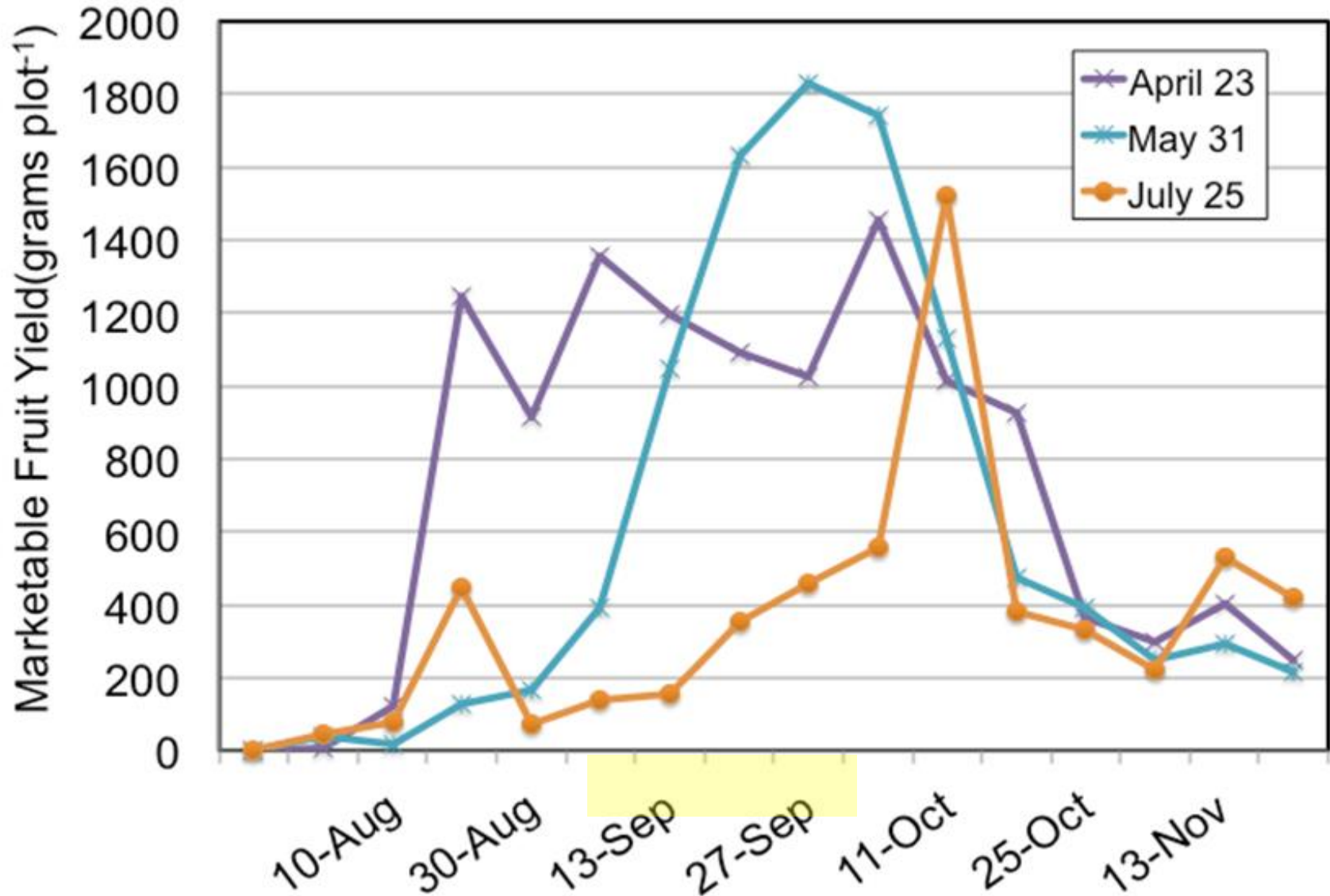
On 25 July plants tipped on June 1  
flower and set fruit



# September fruiting of earliest tipping

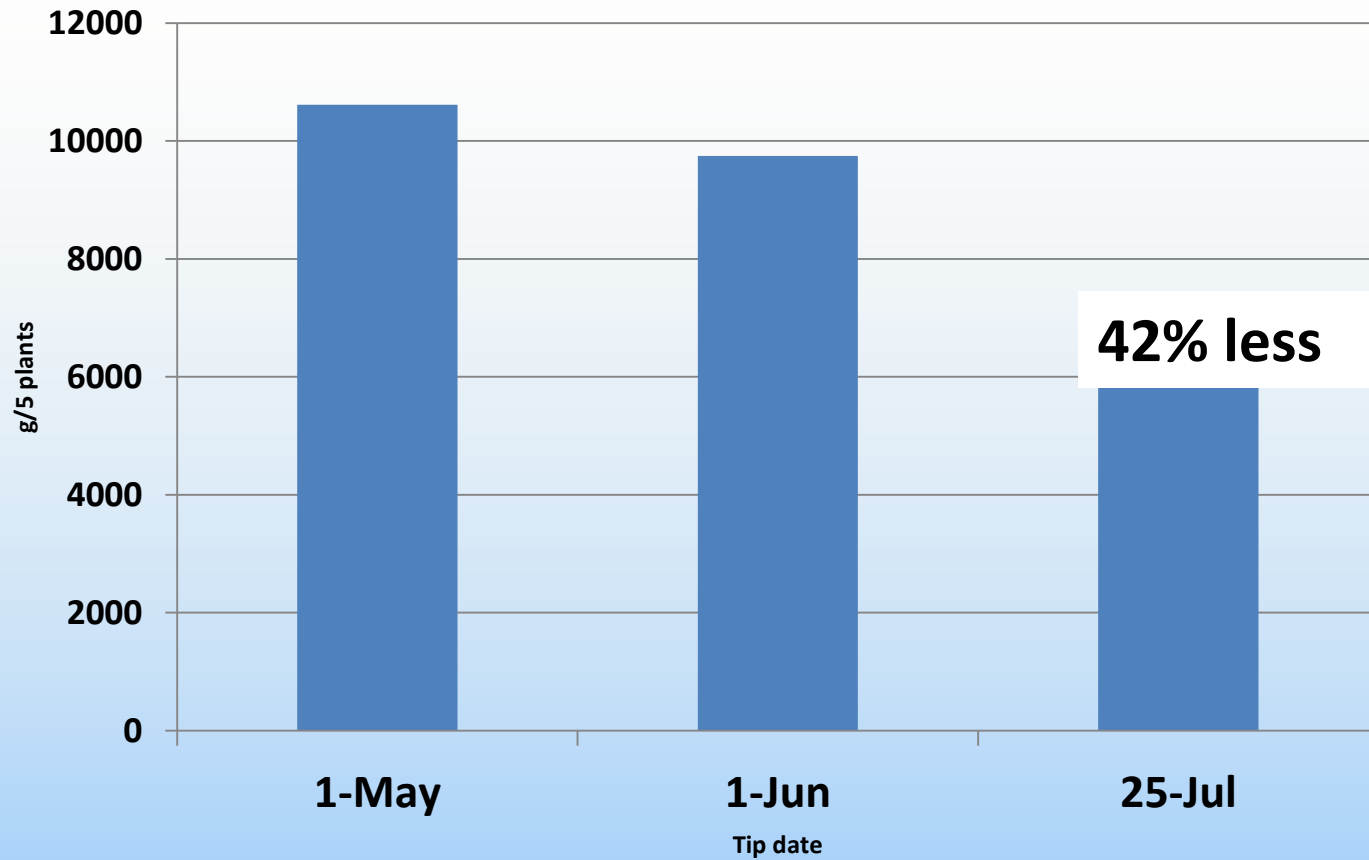


# 2012 fruit yield at 3 tipping times

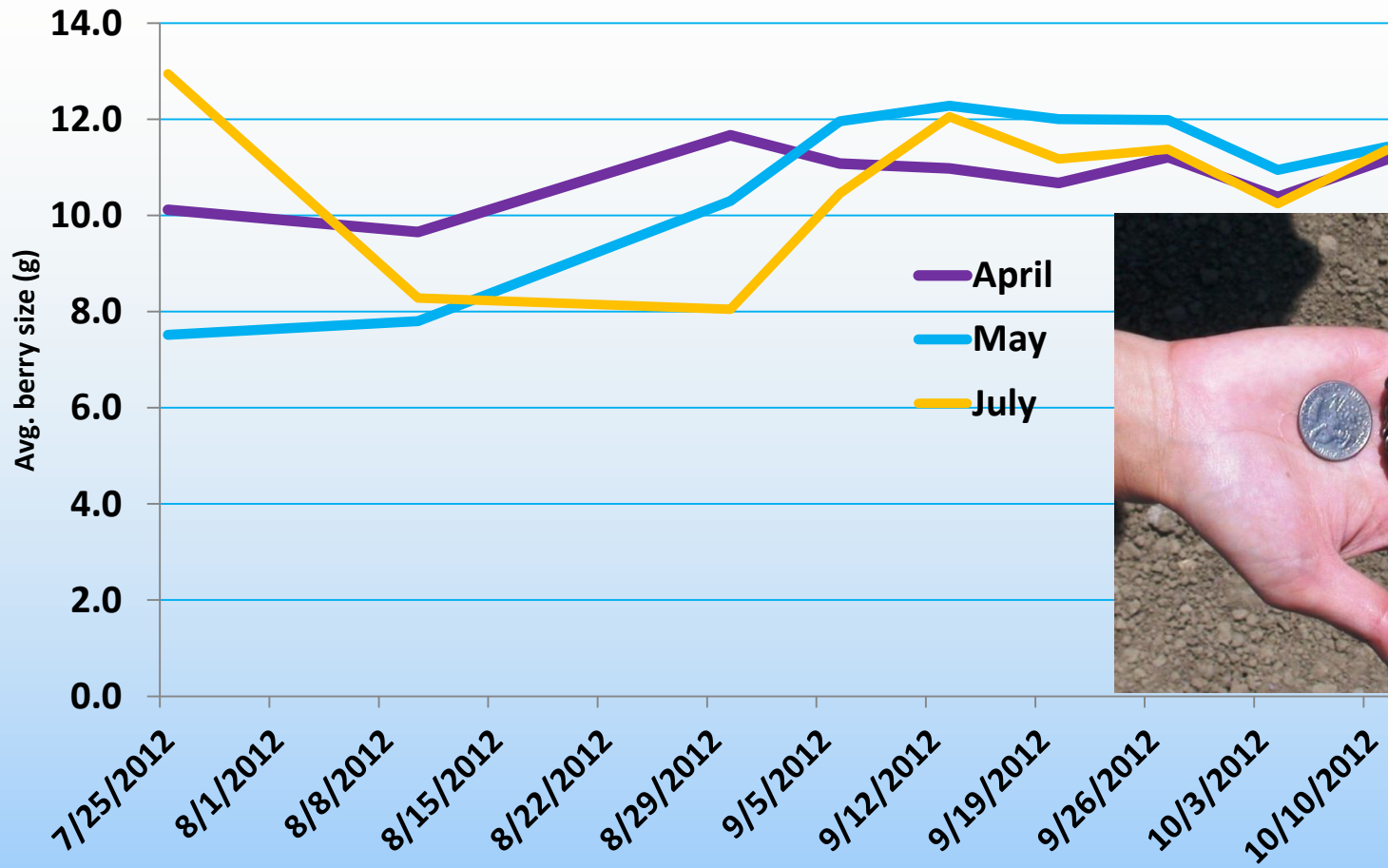




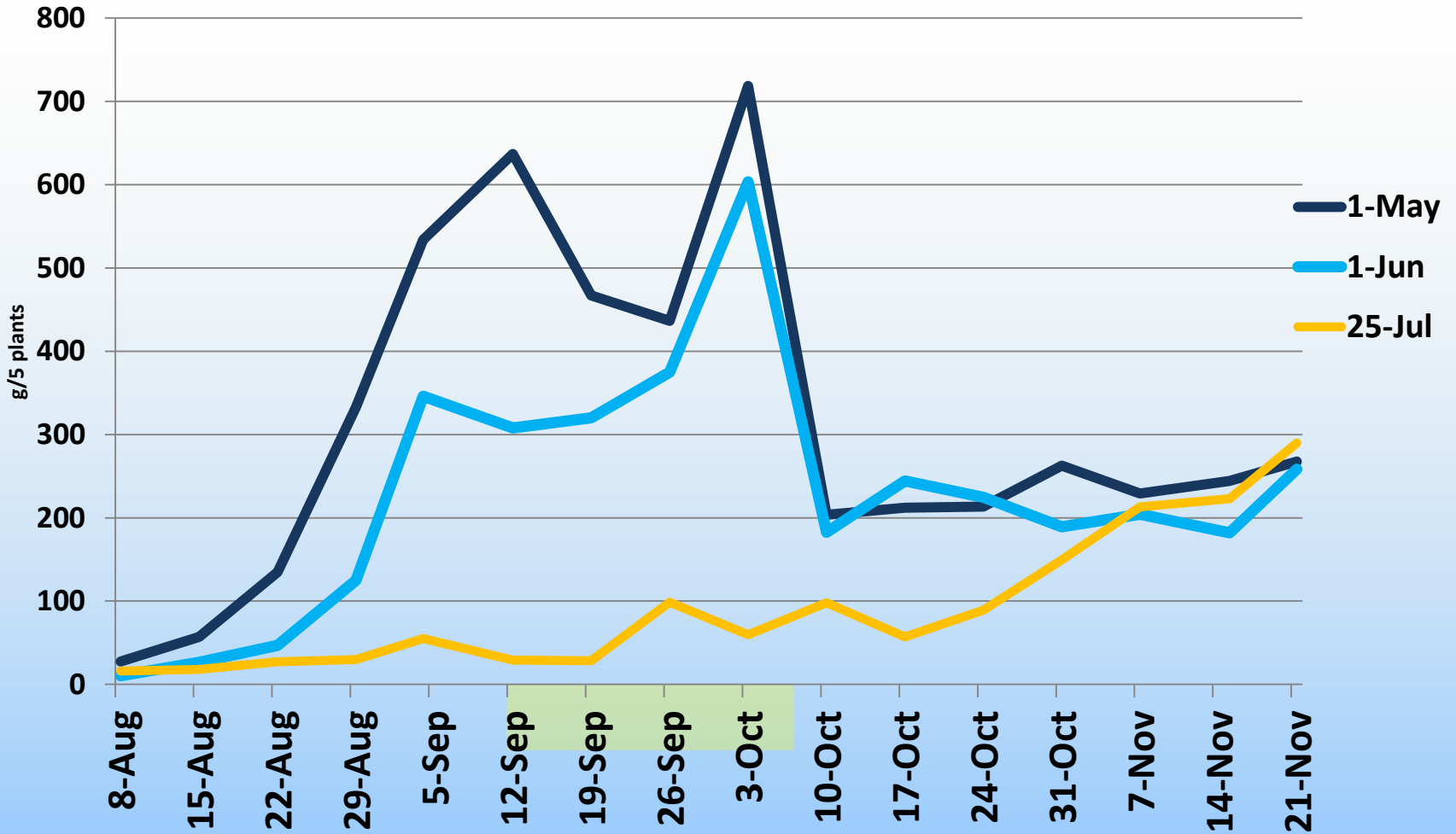
# 2012 fruit yield at 3 tipping times



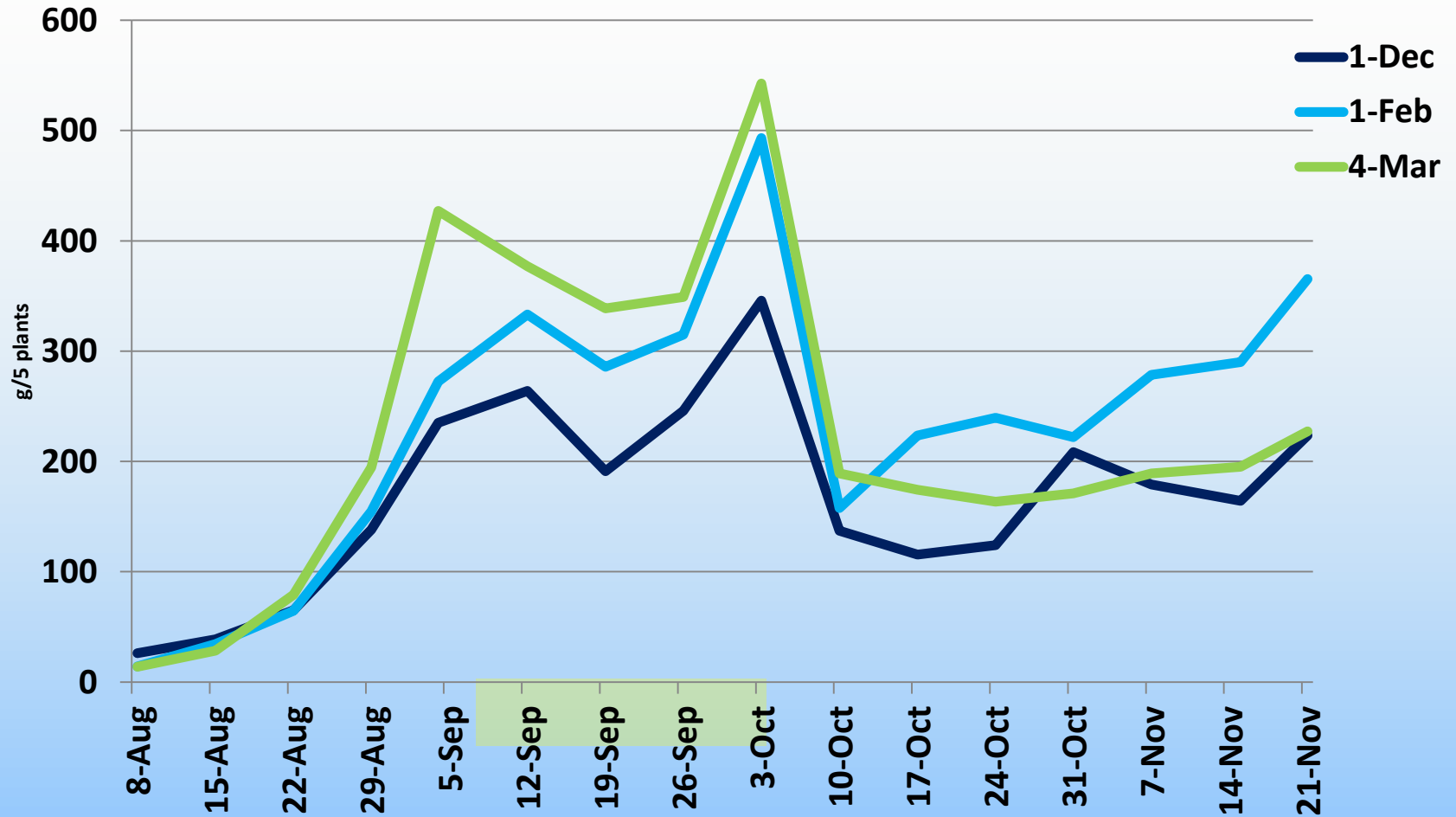
# 2012 fruit size at 3 mowing times



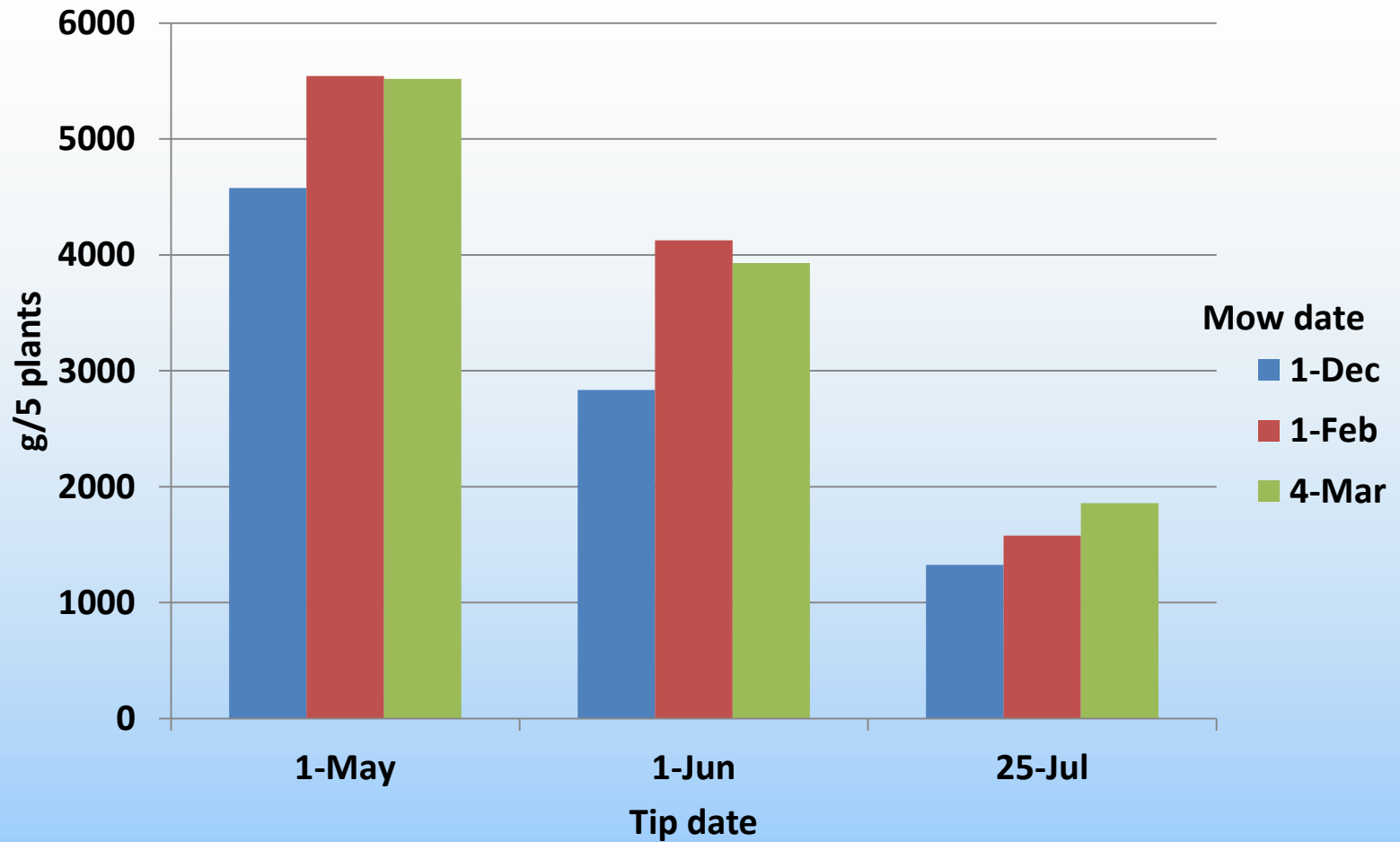
# 2013 fruit yield at 3 tipping times



# 2013 fruit yield at 3 mowing times



# 2013 fruit yield



# 2013 fruit size

- NO effect of mowing time but, **tipping:**

1 May = 8.73 g

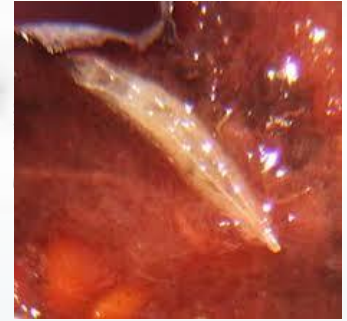
1 June = 8.73 g

25 July = 8.14 g (significantly smaller)

# Regrowth after tipping in July 2013



# Problems: Spotted-wing drosophila



- Traps and sanitation only (no sprays)
- Up to 60% fruit unmarketable during warmest weeks of the season
- Cold night in November = no SWD damage
- Weekly harvest – not frequent enough , but all unmarketable fruit removed (fed to chickens)



# Problems: 2013 spring cane die-back



No pathogens isolated, 5-10% of canes dried

# Problems: strong Santa Ana winds



# Other Problems:

- Birds
- Sunburn
- Scaring of fruit (wind and cane movement)
- Occasional red berry mite
- Botrytis after a rain (once in 2 years)

Thanks to Hansen fund and UCCE-  
Ventura MGs/Volunteers for support  
of this project!

