

El Dorado County

Invasive Weeds Watch

LeeAnne Mila
El Dorado County
Dept. of Agriculture
El Dorado County Invasive
Weed Management Group
(530) 621-5520



Early Detection and Rapid Response

Increase awareness = early detection

Early detection = rapid response

Rapid response = eradicate while small!

Save time and money!

Spotted knapweed

- Highly competitive
- Inhibits growth of other plants
- Irritates human skin
- Montana = 4 mil. ac.!



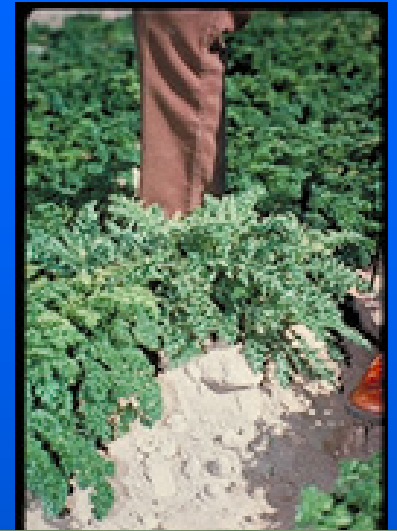
Diffuse knapweed

- Can quickly invade
- Reduces land value
- Increases soil erosion
- Large infestations in Nevada



Canada thistle

- Widespread
Alpine County & Nevada
- Multiple flower heads in clusters
- Extensive root system – can extend 15 ft.



Perennial pepperweed



- Contributes to soil erosion
- Aggressive root system
- Litter shades other plants
- Up to 6 feet tall
- Tiny white flowers
- Horseradish smell
- Waxy leaves





Tall White Top



Fallen Leaf Lake



After....HOPE!!



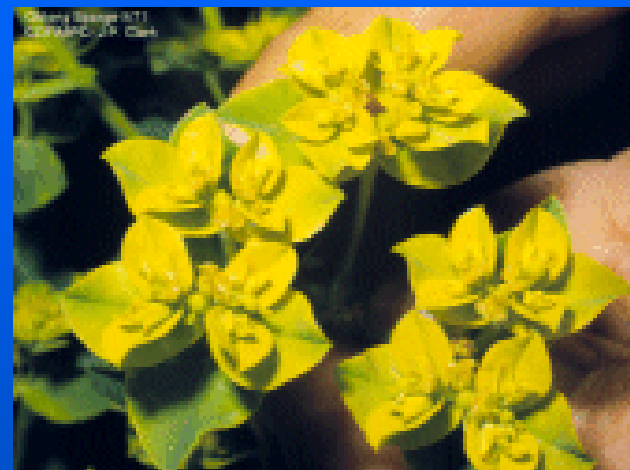
Hoary cress



- This plant grows 1 to 2 feet tall with
- White clustered flowers
- The leaves clasp at the stem

Oblong and leafy spurge

- Infests more than 5 million acres in 35 states
- Camino and Fairplay areas
- Likes wet areas and roadside



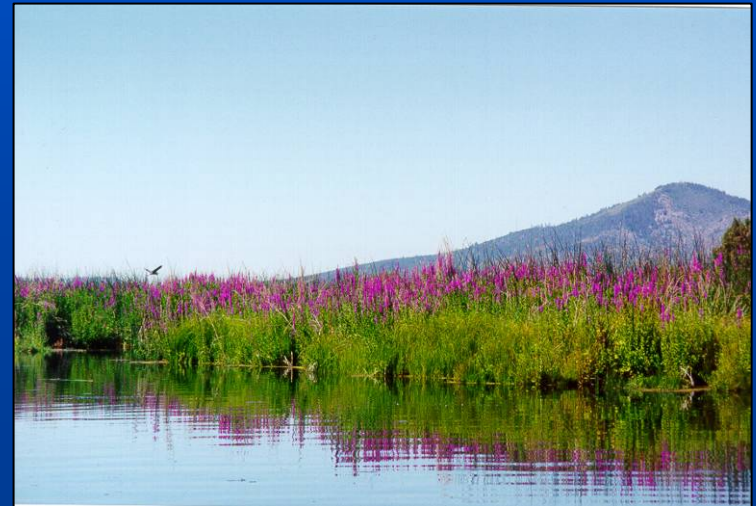
Oblong spurge in Camino





Purple loosestrife

- Escaped ornamental
- Established in 40 states
- Grows in wet areas
- Disrupts irrigation systems
- One plant produces 2.7 million seeds!



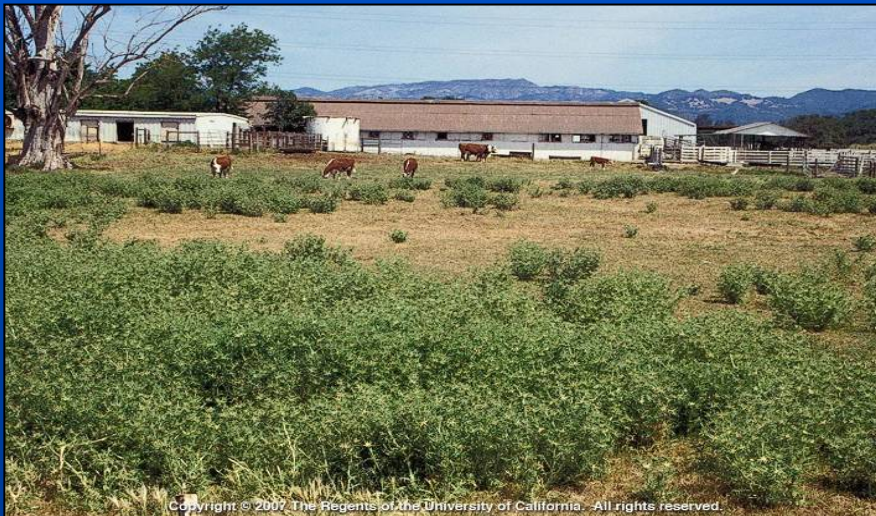
Dalmatian toadflax

- Deep taproot
- Regrows from broken root
- Very difficult to control
- Found in the Lake Tahoe Basin



Purple starthistle

- Very thorny, long spines
- Infestation near Hwy 50



Stinkwort

- Fall flowering
- Very aromatic
- Yellow to reddish colored flowers
- Moving up Hwy 50



Red Sesbania/Rattlebush



Sesbania

- Infestation along Lower American River
- Spread rapidly – seed pods drop winter through spring and can float for 10 days

Arundo donax

- Consumes water
- Erosion/flood problems
- Resprouts from fragments
- Destroys habitat



Yellow starthistle



- Over 12 million acres in California
- Loss of rangeland and recreation
- At 5000 ft elevation into the Sierras
- Eastern “leading edge” project

Rush skeletonweed

- Gray-green stems
- Small flowers
- Hairs on stems
- Stop the spread into the Sierras



Scotch, French and Spanish brooms

- Seeds last 80 years
- Very flammable
- Control isolated infestations



New Finds!

How to Help!

- Early detection – notify your supervisor
- Do not move unknown plants or seed
- Call El Dorado County Dept. of Agriculture

530-621-5520

- Awareness and early detection!

Early Detection and Rapid Response!

The key to keeping invasive weeds out of El Dorado County!

Thank you!