

Preventing the Spread of Invasive Weeds



Wendy West
University of California
Cooperative Extension
wkwest@ucdavis.edu



Why is Prevention Important?

- Avoid establishment of new infestations
 - Detect early
 - Eradicate early
 - Save money!
- Prevent spread of a known infestation
 - Contain infestations
 - Stop spread beyond a leading edge line

How Invasive Weeds Spread

- Animals and birds
- Humans – on boots, clothing, pets
- Wind and water
- Escaped ornamentals
- During activities that cause disturbance
 - e.g. equipment, road materials

Site-Disturbing Projects

- Construction areas – homes and offices
- Road construction and improvements
- Construction of fire breaks
- Fire evacuation routes
- Clearing to reduce fire fuels
- Ditches

Site-Disturbing Projects

Why worry about weed spread during site disturbing projects?

Seed bank

Bare ground – invasives love open areas

Seeds, plant parts moved by equipment

Prevention Tips

- Learn which plants are considered invasive in your area
- Inventory plants (desirable vs. invasive) on your property and along access roads before a site-disturbing project begins
- If invasive weeds are present, treat them before disturbing the soil in an area (ideally for 3 to 5 years prior)



Prevention Tips

- Minimize the soil disturbance and retain desirable vegetation



Prevention Tips

- Require all equipment used on your property to be cleaned **BEFORE** work begins to remove:
 - seeds
 - plant fragments



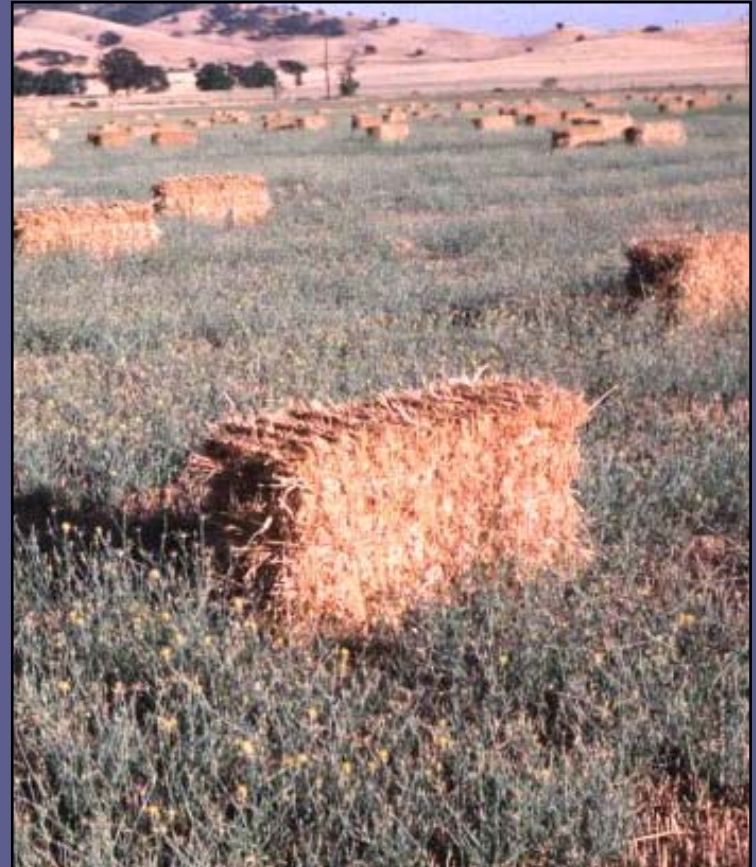
Diffuse knapweed at equipment storage yard

Prevention Tips

- Mark off known infestations and request equipment operators to work in these areas last
- When practical, salvage weed-free topsoil and replace it on disturbed areas; healthy topsoil will enhance revegetation

Prevention Tips

- Request weed-free materials (fill, gravel, sand, mulch, straw, etc.) from suppliers



Straw from a YST infested field

Prevention Tips

- Re-establish vegetation on all bare ground
- Mulch to “shade out” invasive weeds and prevent seed germination



Revegetation project

Prevention Tips

- Inspect the project site for at least three growing seasons after completion of project



Prevention Tips

- Weed infestations should be controlled immediately to prevent further spread!



Hoary cress

Remember...

... prevention and early detection

are the most cost effective invasive weed control methods!

Questions?

Thank You!