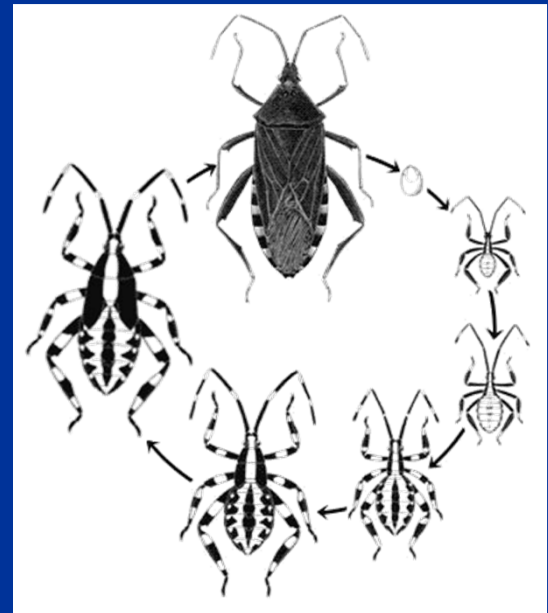
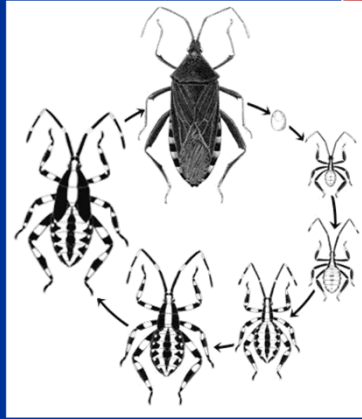


# Managing Leaffooted Bugs in Almonds



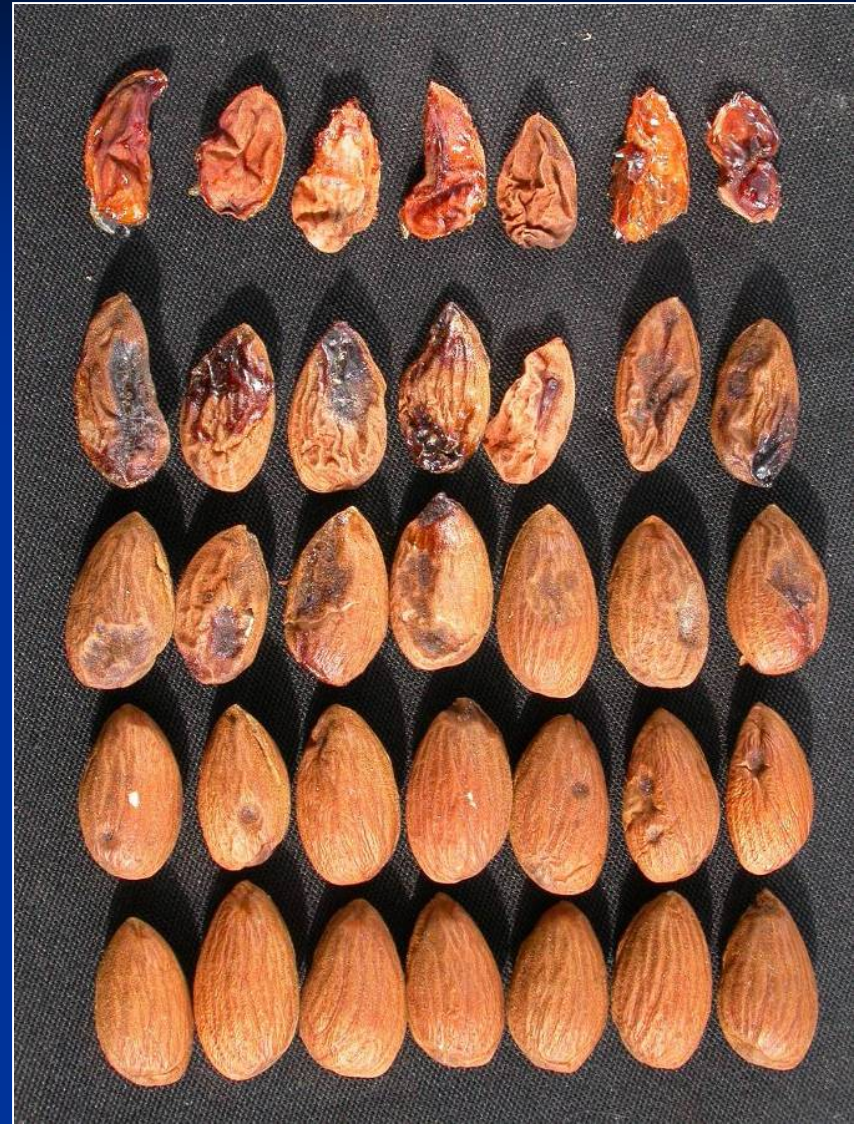
David Haviland  
Entomology Farm Advisor  
UC Cooperative Extension, Kern Co.





## Damage

- Migrate to orchards  
March through May
- Adults cause damage
  - Abortion early (to early May)
  - Deformation/staining later
- Usually leave or die

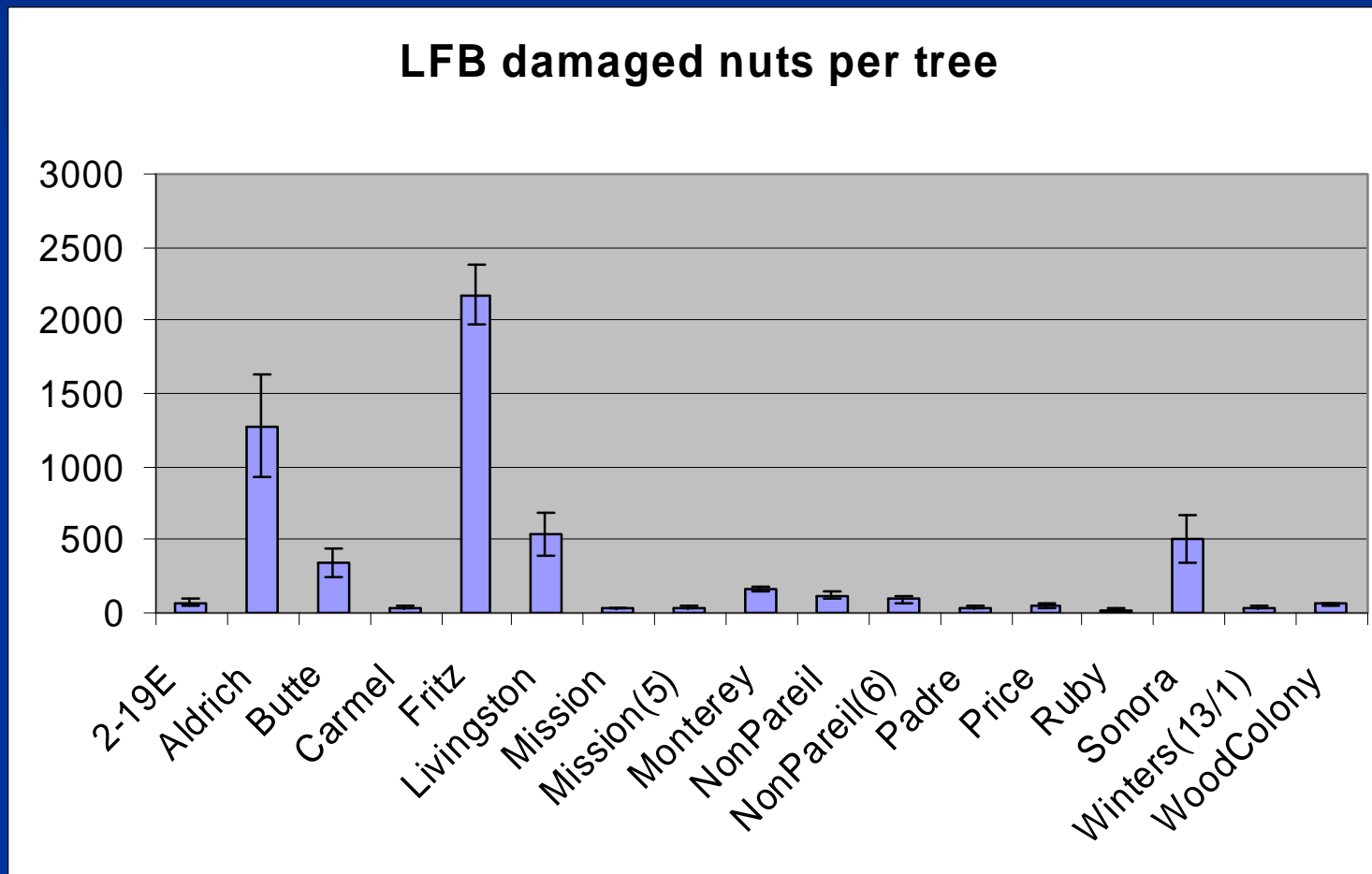






# Varietal preferences

- Significant for leaffooted bug



# Monitoring Program

- Monitoring for the insects
  - Leaffooted bug
    - Adults cryptic
    - Often high in the tree
    - One bug can do lots of damage
- Monitoring for gummosis
  - Look for gummosis
  - Cut a cross-section to see if probing was involved
- Look for nut drop
  - Especially susceptible varieties
  - About a 7 day lag period



UC Statewide IPM Program  
© 2005 Regents, University of California

# Control Program

- If you see the bugs
  - ...or gummosis
  - ...or bug-induced nut drop
    - Consider the variety
    - Consider the time of year
    - Consider damage levels
- Talk to your friends
- When in doubt, treat
- Chlorpyrifos or pyrethroids
  - Tank mix with worm or mite sprays

