

Grasshoppers

Maxwell Norton

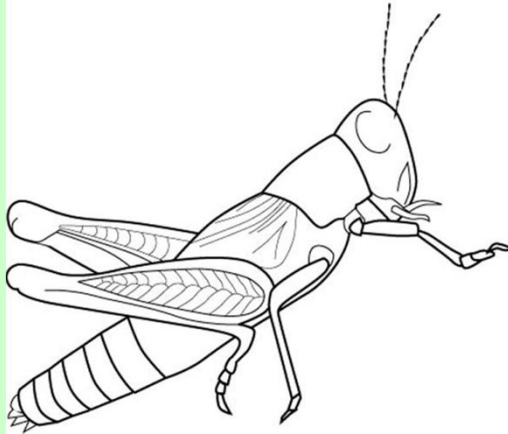
UC Cooperative Extension

With much material from UC IPM Program

Grasshopper Feeding





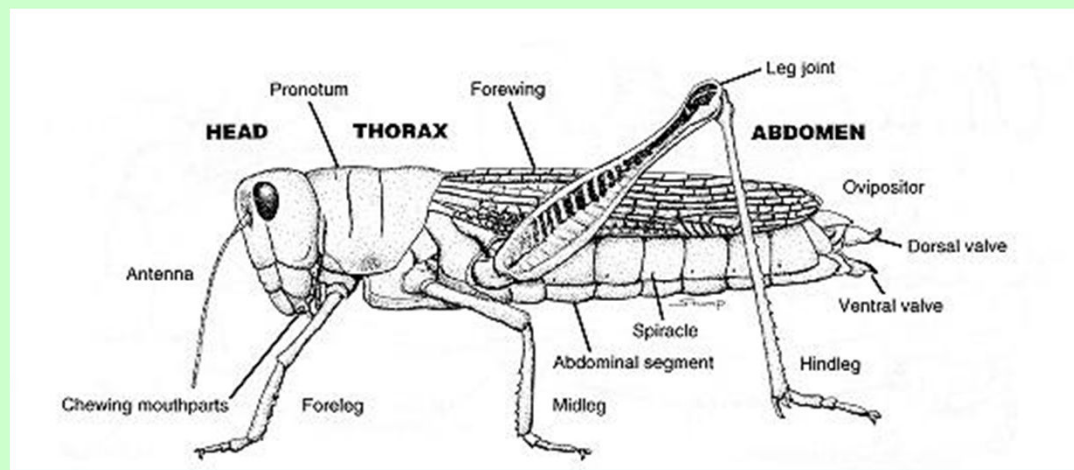


- Appearances can vary depending on species
- Environment and food may affect appearance.
- Can be confused with relatives such as crickets and katydids (both have longer antennae)

Over 200 species in CA

Most widespread and destructive:

- “devastating grasshopper”
= *Melanoplus devastator*
- “valley grasshopper”
= *Oedaleonotus enigma*



MORPHOLOGY

From: USDA-ARS

Adult Devastating Grasshopper



Adult Devastating Grasshopper



Copyright © 2008 The Regents of the University of California. All Rights Reserved.

Grasshopper Nymph



UC Statewide IPM Project
© 2001 Regents, University of California

Adult Grasshopper



UC Statewide IPM Project
© 2000 Regents, University of California

Unknown grasshopper species on citrus



Grasshopper Nymph (species unknown)



Adult Gray Bird Grasshopper



Field Cricket Nymph



Cricket Nymph



Adult Katydid

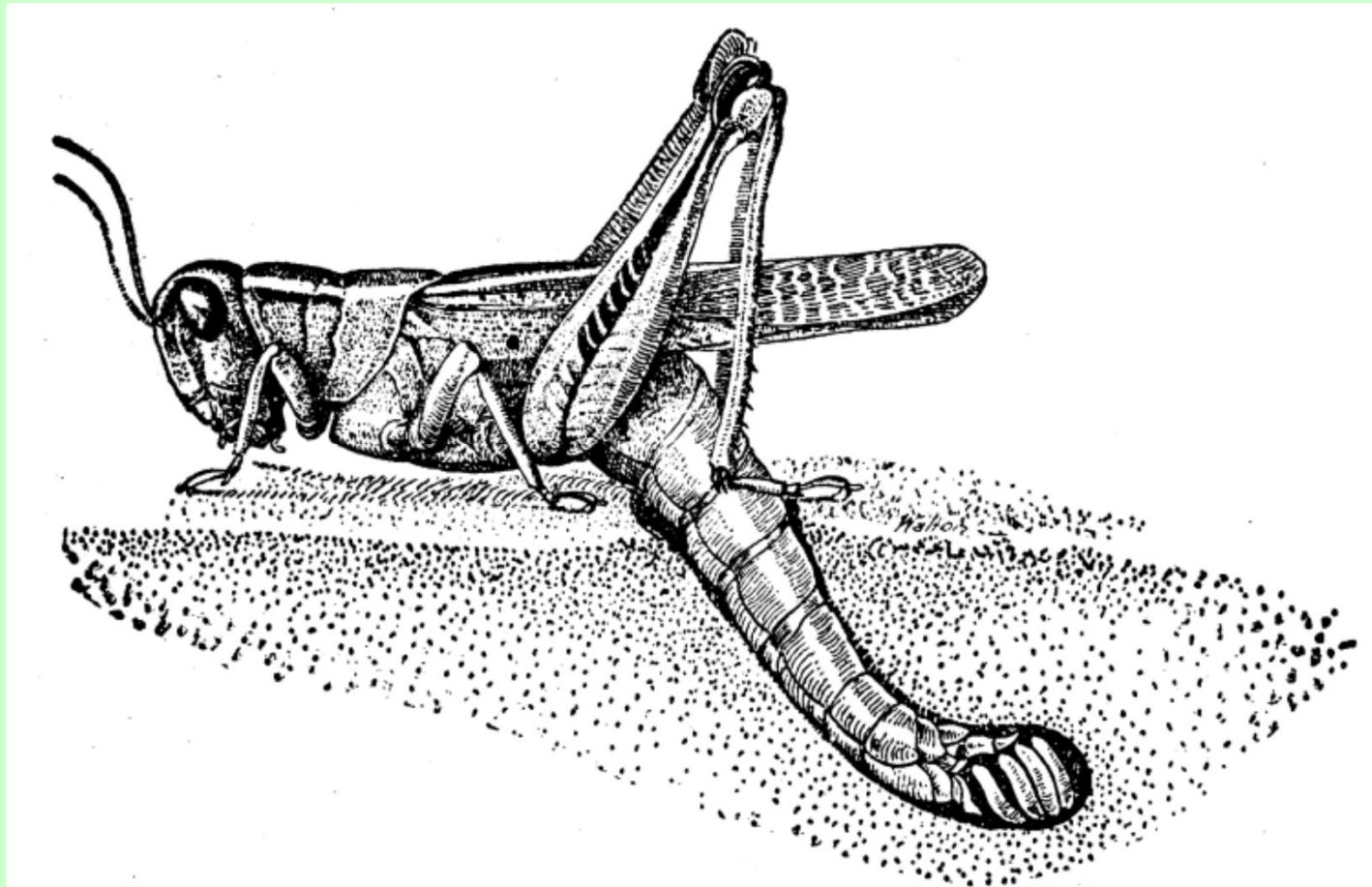


Adult Praying Mantid

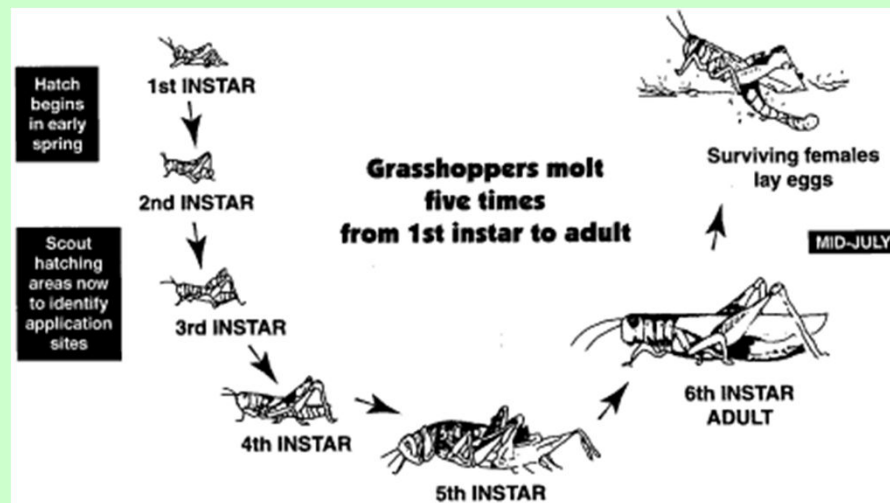




From: Animal Corner – U.K.

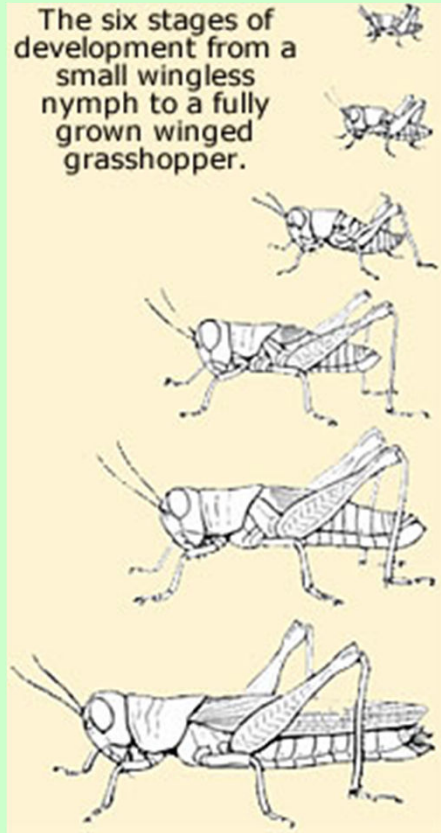


Depositing eggs in the soil

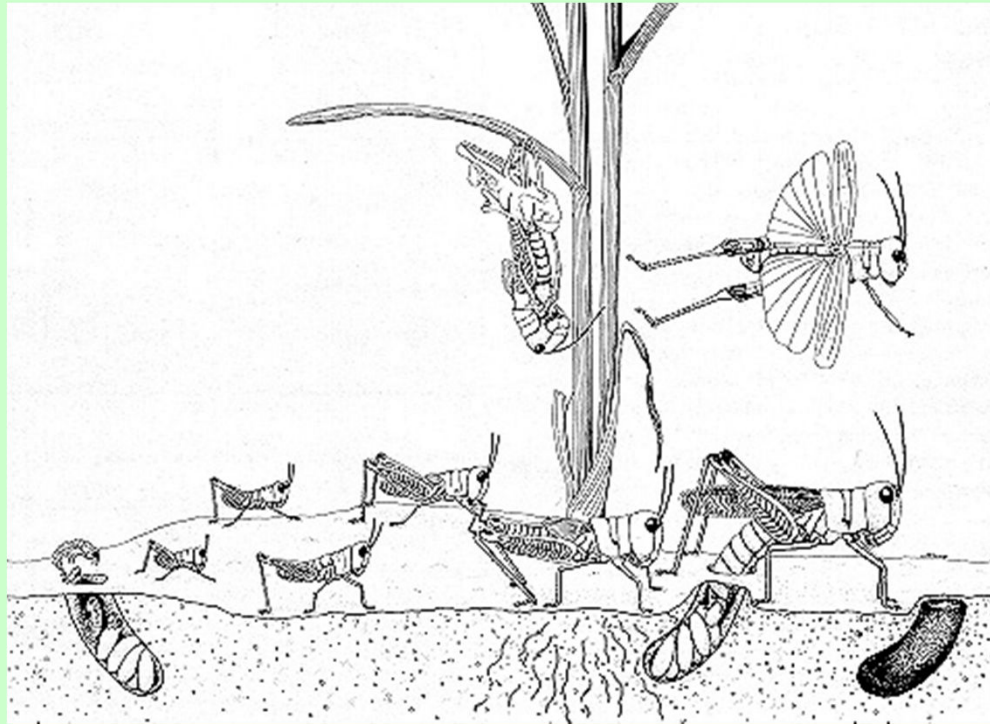


From: North Dakota State University

The six stages of development from a small wingless nymph to a fully grown winged grasshopper.



From: Animal Corner – U.K.



From USDA-ARS

Temperature Effects

Warm spring

Early hatch, followed by

<70F → No feeding, high mortality

Hot summer thru fall

Early maturity of grasshoppers

Long egg laying period

Warm and dry → Good start

Winter temps have little affect

(From North Dakota State University)

Rainfall Effects

Cloudy, wet weather for 1+ weeks

→ fungal pathogens of grasshoppers

Prolonged wet periods can make worse

Heavy rains during emergence can kill young, embed young in soil or physically wash them away

Extreme drought

- Poor egg hatch

- Starve from lack of food

- Low egg production by adults

Decrease when . . .

Warm early spring, premature hatch
and cold snap → poor development

Hot in early spring, promotes hatching
following by cloudy, wet weather
favors occurrence of disease

Cool summer and early fall delays
maturity & shortens time for egg laying

Increase when . . .

Cool, wet weather in early spring prevents premature hatch & insures adequate food supply

Warm and dry in late spring promotes uniform hatching also good for feeding

Hot summer with adequate rainfall provides good food supply
low incidence of disease

Late fall → long egg laying period

(From North Dakota State University)

Severe outbreaks often develop when there are a few years of gradual increase followed by an unusually favorable year

- Grasshoppers & crickets often in-migrating
- Usually cannot treat where came from
- Must protect your own domain
- Screening - exclusion
- Spraying & baits
- Trap crop
- Chickens

Use metal window screen



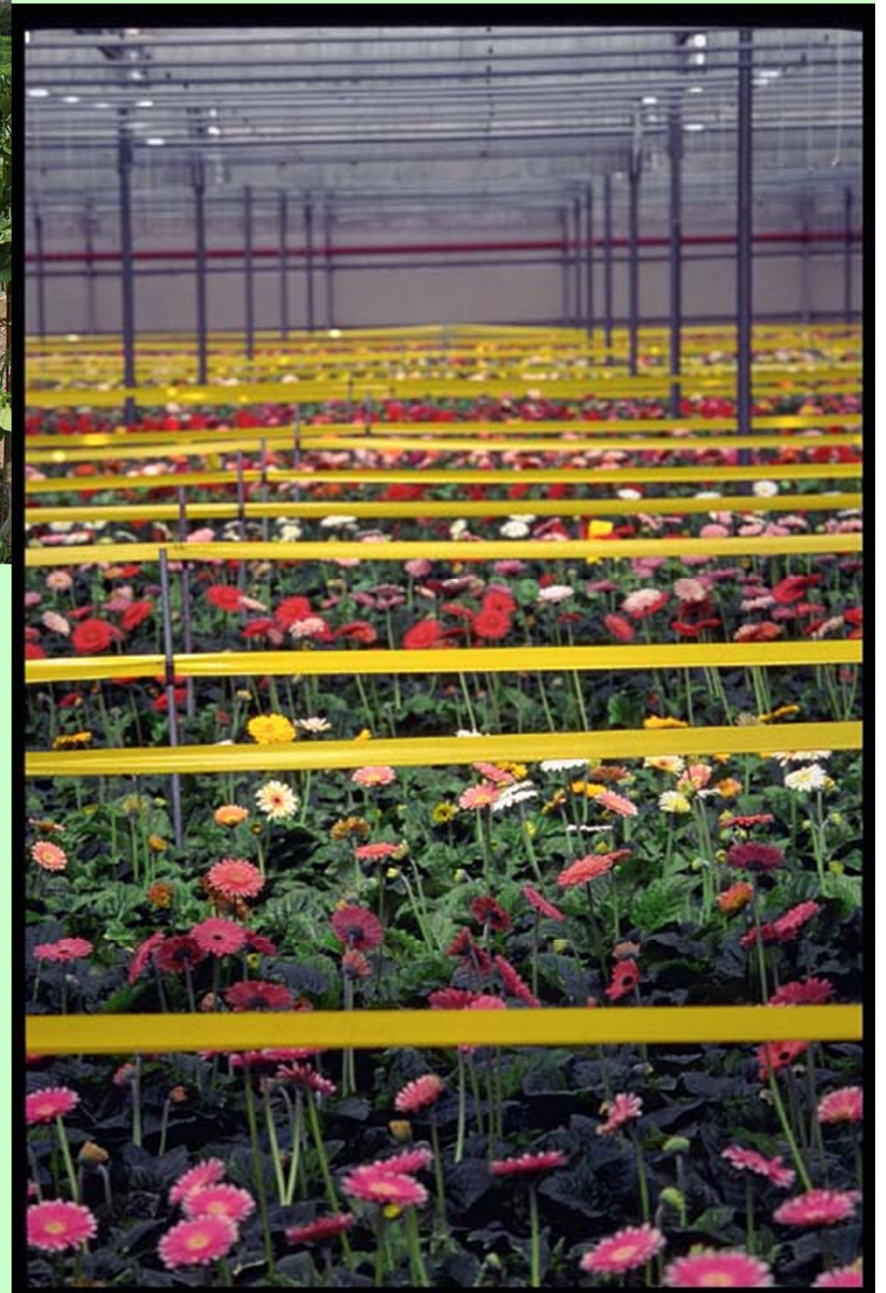
Screen needs to cover wood also





Copyright © 2006 Regents of the University of California

Inside shelter, can use
sticky cards or tape



Chemical Control

- Yard and garden foggers
- Pyrethrum or synthetic pyrethroids
- Many other garden insecticides
- Will have to repeat as needed
- Bait containing carbaryl (Sevin) “EcoBran”
- Bait with Semaspore

Bait containing Sevin
Fairly fast-acting
Only kills insects with chewing mouth parts
(grasshoppers & crickets)





PlanetNatural.com

- *Nosema locustae* = naturally occurring disease
- Become sick, eat less, and begin to die
- Disease spreads to healthy grasshoppers through cannibalism
- In 2-4 weeks, 50% die, most survivors will be infected & spread the disease.
- Infected survivors eat less and lay fewer eggs.
- Safe for people, pets and the environment.
- OK for organic production.

- Need to apply early – nymphs
- Near where hatching if possible
- Farm Supply needs week to get in
- Does not act immediately

Stanislaus Farm Supply 723-0704

Trap Crop

- Plant a green strip of something attractive in long strip 200-300 feet away
- They like corn, beans, onions, alfalfa
- Keep well-watered & lush
- Spray once per week with a fast-acting insecticide like a synthetic pyrethroid
- Bait containing carbaryl (Sevin)
- Semaspore

- Chickens & guinea hens love insects
- Can be used all season for pest control
- Keep out of vegetable gardens until after harvest is complete
- They even eat gophers
- Long narrow run on side of yard where insects come from, or in a perimeter



University of California • Agriculture and Natural Resources

UC IPM Online

STATEWIDE INTEGRATED PEST MANAGEMENT PROGRAM

- Search**
- Announcing...**
- [Maintenance gardener pest control exam preparation](#) (Category Q)
 - [Kiosk schedule](#) updated for November
 - [False Chinch Bug](#) new Pest Note!
 - [Dry beans](#) guidelines updated.
 - [Green Bulletin](#) new issue for October.
 - [Cole Crops](#) and [Lettuce](#) guidelines updated.
 - [Alfalfa](#) guidelines updated
 - [Sudden Oak Death](#) new Pest Note!

Solve your pest management problems with UC's best information, personalize it with interactive tools, or find out about pest management research and extension projects.

- ▶ [About UC IPM](#)
- ▶ [2009 Annual Report](#)

- What's new
- Forms
 - Site index
 - In the News
 - Acknowledgments
 - Subscribe
 - Contact us

- Related links
- Western IPM Center
 - Western Plant Diagnostic Network
 - UC ANR more topics

How to manage pests



- Manage and identify insects, mites, diseases, nematodes, weeds, and vertebrates**
- ▶ Homes, gardens, landscapes, and turf (including Pest Notes)
 - ▶ Agriculture and floriculture (Pest Management Guidelines)
 - ▶ Natural environments
 - ▶ Exotic and invasive pests
- Use tools to help make decisions**
- ▶ Weather data and products
 - ▶ Degree-days
 - ▶ Interactive tools and models

Educational resources



- ▶ Publications and other materials
- ▶ Workshops and events
- ▶ Training programs
- ▶ Pesticide information

Research and IPM



- ▶ Grants programs
- ▶ Results of funded projects
- ▶ Research tools and databases

ipm.ucdavis.edu



California Master Gardener Program

- Home
- Gardening Basics
- Gardening Classes & Events
- Flowers
- Glossary: A - M
- Growing Berries in Your Backyard
- Growing Grapes (table, wine, raisins) in Your Backyard
- Indoor Plants
- Landscape Trees, Shrubs, & Vines
- Lawns
- Links
- Nut & Fruit Trees & Vines
- Poisonous Plants
- Vegetables
- What is my climate zone?
- Guestbook

EMAIL PRINT

Welcome!

The California Master Gardener Program designed the California Garden Web to serve as a portal to organize and extend the University of California's vast collection of research-based information about gardening to the public. The California Garden Web focuses on sustainable gardening practices and uses a question and answer format to present solutions. The blog below highlights gardening issues pertaining to the season.

California Gardening Blog

[Red Palm Weevil Detected in Orange County](#)

(Text abridged from CDFA Alert) In October 18th, 2010 Ag officials confirmed the detection of a red palm weevil (scientific name: *Rhynchophorus ferrugineus* and native to Southeast Asia) in Orange...

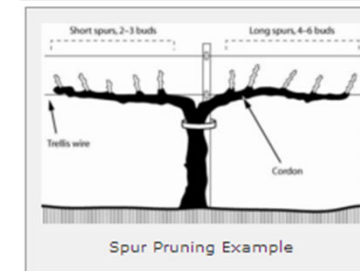


[Continue Reading](#)

Posted by [Pamela M. Geisel](#) on Monday, October 25, 2010 at 1:40 PM

[Comments: 0](#)

California Gardening



1 == 11 12 13 == 64

[View All Items](#)

Tell Us

[Has this site helped you or changed your gardening practices?](#)