

Meeting Announcement

February 2024


University of California

Agriculture and Natural Resources | Cooperative Extension

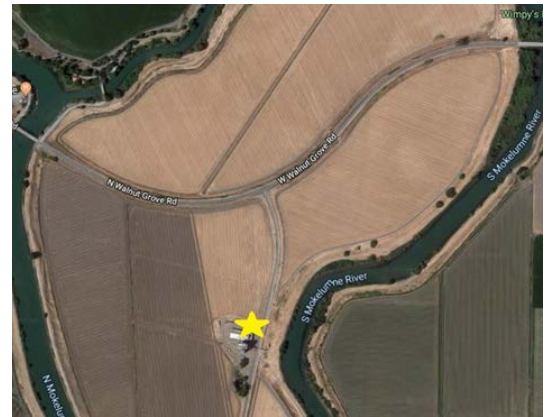
Cover Crops in Rice - Field Demonstration Day

Thursday, February 29, 2024

10:00am – 12:00pm

Staten Island, 23319 N. Staten Island Road, Thornton

- 9:30am Arrive at Staten Island grain silo to sign in (See yellow star on the map)
- 9:45am Depart to field location – Don't be late!
- 10:00am **Welcome and Introductions**
Michelle Leinfelder-Miles, UCCE Delta Region
- 10:05am **Winter Cover Cropping in Rice Systems – Field Demonstrations**
Michelle Leinfelder-Miles, UCCE Delta Region
- 10:20am **Cover Crop Variety Evaluations**
Sara Rosenberg, UC Davis
- 10:35am **A Grower's Perspective on Cover Crops**
Jerrold Dixon, Conservation Farms and Ranches
- 10:55am **Healthy Soils Program – Block Grant Pilot Program**
Chris Kelley, CA Land Stewardship Institute
- 11:10am **What's New in Rice Weed Management**
Whitney Brim-DeForest, UCCE Sutter/Yuba
- 11:25am **Weedy Rice Updates**
Whitney Brim-DeForest and Michelle Leinfelder-Miles, UCCE
- 11:40am **Discussion, Viewing of Field Plots, Evaluation**



CCA continuing education credits have been approved (0.5 PM, 1.0 CM, 0.5 PD). Refreshments will be provided. We thank our project sponsors and partners for supporting this work, and we thank you for your participation!


Healthy Soils Program

CDFA OFFICE OF ENVIRONMENTAL FARMING & INNOVATION


Conservation Farms & Ranches
Staten Island, California

 Cap and Trade
Dollars at Work

UC DAVIS
UNIVERSITY OF CALIFORNIA


The University of California Division of Agriculture & Natural Resources (UCANR) is an equal opportunity provider. (Complete nondiscrimination policy statement can be found at <http://ucanr.edu/sites/anrstaff/files/215244.pdf>.) Inquiries regarding ANR's nondiscrimination policies may be directed to UCANR, Affirmative Action Compliance Officer, University of California, Agriculture and Natural Resources, 2801 Second Street, Davis, CA 95618, (530) 750-1343. The University of California working in cooperation with San Joaquin County and the USDA. Our programs are open to all potential participants. If you require special accommodations, please contact UCCE San Joaquin County (2101 E. Earhart Ave., Ste. 200, Stockton, CA 95206. 209-953-6100.)