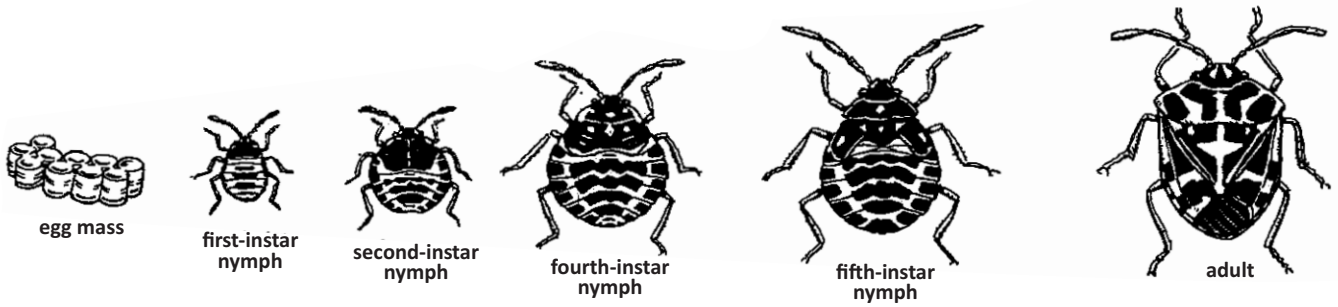
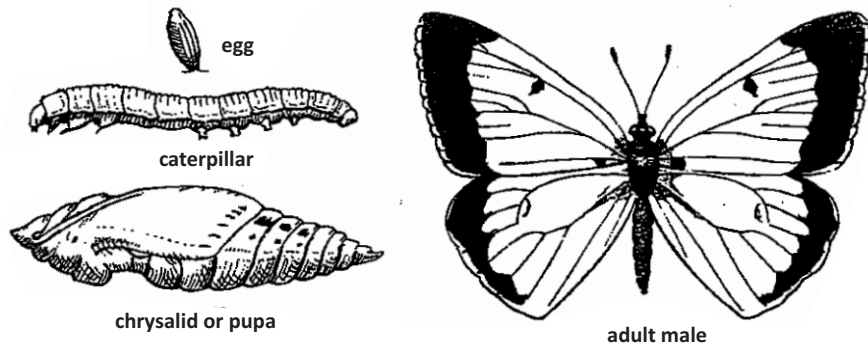


## Gradual Metamorphosis



- Grasshoppers, Crickets & Katydid
- Termites
- Earwigs
- True Bugs
- Aphids, Hoppers, Mealybugs, Psyllids, Scale, Whiteflies

## Complete Metamorphosis



(larvae go through several molts prior to pupation)

- Lacewings & Antlions
- Beetles & Weevils
- Butterflies & Moths
- Flies, Mosquitos, Gnats, Midges
- Ants, Bees, Wasps & Sawflies

## Larvae Types

