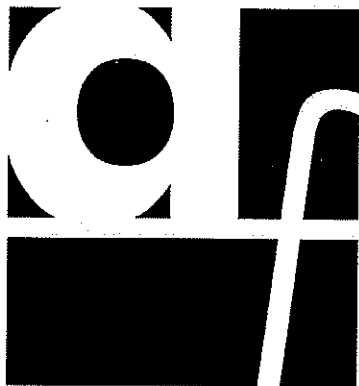


associated *feed*

800•540•FEED

www.associatedfeed.com



Dr. Ines Stock Camp

Swine

associated *feed*



Sales Team

Andrea Kaldhusdal	(661) 332-9915
Lily Siebert	(209) 604-7479
Ron Luis	(209) 531-5936
Brady Otto	(530) 521-9054

Show Maker



Junior Awards Program

Associated Feed – Founded in 1971, has been dedicated to the livestock feed industry for over thirty years. With a focus on excellent performance and customer service, AFS has long been recognized as a reputable source of poultry, swine and livestock feeds.

Associated Feed is proud to offer a "full line" of feed products to meet the diverse needs of our customers. A family owned business that has the flexibility to deal with the ever-changing needs of the livestock industry, Associated Feed and Supply strives to provide quality products at a fair price along with excellent service.

Akey and AFS – Associated Feed and Supply and Akey have teamed up to provide "high Tech" show diets that Maximize Performance. The MP line of Specialized Show Diets is designed to the lead the way with nutrition that meets the demands of the novice or serious show contender.

Extensive research has allowed Akey Inc., a leader in livestock feed nutrition to develop time tested show diets developed for your junior livestock project. The MP Diets have been designed to allow animals to reach their true maximum genetic potential.

Specialized Show Diets are the standard when evaluating nutrition and performance for the show ring. Be sure to watch for new product alerts and ask your dealers for new information. We are on the cutting edge of show animal nutrition and as new products and information become available we want make sure you are informed.



For more information about our program, or to find you're nearest dealer, you can reach your Livestock Nutrition and Management Specialist by calling (800) 540-FEED.

Let's get associated!

Junior Awards Program – All junior members competing at Junior Livestock Shows are eligible to participate. Please

complete the awards application upon completion of the fair if you are eligible to receive an award from Associated Feed. Your local Associated feed dealer can request the application for your completion.

Applicants are eligible if they have fed Associated Feed, Meatmaker, or Specialized Show Diets as there primary feed for the animal that received the award. Applicants that receive an award for an animal agree not to use the animal in any other advertisement for a competing feed company, doing so will forfeit the award.

Participants may collect cash awards paid by check from Associated Feed by exhibiting either the Supreme Grand Champion or Reserve Supreme Grand Champion in their respective livestock division. Awards are eligible for market animals only. Requests for awards should be presented within 60 days to:

Junior Awards Program
c/o Associated Feed
Attn: Shelbey
P.O. Box 2367
Turlock, CA. 95381

Participants are asked to send proof of purchases or verification from the local dealer along with a high quality photo of the winning animal. By submitting your photo and application you provide a release for advertising to Associated Feed.

Beef	Grand Champion	\$ 200.00
	Reserve Champion	\$ 100.00
Swine	Grand Champion	\$ 100.00
	Reserve Champion	\$ 50.00
Sheep	Grand Champion	\$ 100.00
	Reserve Champion	\$ 50.00
Market Goats	Grand Champion	\$100.00
	Reserve Champion	\$ 50.00
Rabbits - Fryer	Grand Champion	\$ 25.00
	Reserve Champion	\$ 15.00
Poultry – Broilers	Grand Champion	\$ 25.00
	Reserve Champion	\$ 15.00

Junior Awards Program

Applicants Name _____ Phone _____

Address _____

City _____ State _____ Zip _____

Show Level _____ *Show Date* _____ *Show Name and Location (City & State)* _____

____ County _____

____ State _____

**JACK POTS NOT APPLICABLE*

Description of animal (kind, breed, weight), which won the award _____

Supreme Grand Champion Reserve Supreme Grand Champion

Associated Feed was the only brand of commercial feed fed in this project:

Yes No (if no attach full details of feeding program.)

Dealer Name _____ Phone _____

Dealer Signature _____

Enclosed with this application are:

Dealer verification for feed purchased. (Receipts or signature)

High quality photo for advertising purposes. Photos will not be returned and become Associated Feed property.

Short story describing information about project and explanation of feeding program.

With this application I consent to the use of my name and picture, information about my use of feeds, and my results for advertising and promoting the sale of its various products by Associated Feed and Supply and/ or its dealers, representatives or agents. I agree to participate in no other commercial feed company awards program for the animal specified in this application, doing so will result in forfeiture of the above award and any cost associated with collection of returned award along with advertising cost incurred. I am submitting this within the 60 day requirement.

Signature _____ Date _____

Signature of parent or guardian for persons under 18 years of age.

_____ Date _____

associated*feed*



Jr. Livestock Camp



Feeds & Feeding

1-800-540-FEED
www.associatedfeed.com



The Six Essential Nutrients

Protein

Are made up of amino acids the building blocks for growth, finishing, reproduction, work, production and maintenance. There are multiple sources of protein, for correct nutrition and proper amino acid balance.

Examples of protein are: Soybean meal, Fishmeal, Alfalfa meal and Linseed meal are used as protein sources.

Carbohydrates

They are used as a source of heat, energy and stored as fat in the body.

Examples of Carbohydrates: Grains – Rolled Corn, Whole Oats, Rolled Barley and Ground Wheat.

Water

The most neglected nutrient. Water needs to be clean, cool and available free choice. Use electrolytes (4-Sure) during stressful periods or prior to shows to get animals used to fair water.

Signs of dehydrated might include:

- Animals sides are sunken in
- Animals feces are dry and crumbly
- Animal won't eat

Fat

Fat like carbohydrates provide a source of heat and energy. However fat provides more heat and energy than carbohydrates but takes more energy to break it down.

Examples: Vegetable fats and animal fat

Minerals

Required for basic bodily functions and bone growth and density.

Provide salt free choice.

The Essential Minerals – Calcium, Phosphorous, Zinc, Selenium and trace minerals.

Other important minerals- Ammonium Chloride to prevent urinary calculi in Sheep and goats.

Some minerals can be toxic- Avoid excess copper in sheep diets to avoid toxicity.

Vitamins

Required for immune system – to help maintain health and bodily functions.

Supplement Vitamin A, B12, E, and D to ensure proper intakes in the mixed feeds. Forages and sunlight also provide vitamins to be synthesized by your show animal.

associated feed

Show Maker



**RECEIVING
DIET W/CSP**

(300304M)

MEDICATED



FOR GROWING PIGS 40 TO 100 POUNDS BODY WEIGHT

Grower and finisher feeds:

Administer to swine in a complete feed for reduction of the incidence of cervical abscesses; treatment of bacterial swine enteritis (salmonellosis or necrotic enteritis caused by *Salmonella choleraesuis* and vibronic dysentery); maintenance of weight gains in the presence of atrophic rhinitis; increased rate of weight gain from 6 to 16 weeks postweaning. For swine raised in confinement (dry lot) or on limited pasture.

ACTIVE DRUG INGREDIENTS

Cholortetracycline	100g/ton	(0.011%)
Sulfathiazole	100g/ton	(0.011%)
Penicillin (from Procaine Penicillin)	50g/ton	(0.0055%)

GUARANTEED ANALYSIS

Crude Protein	Min.	19.00%
Lysine	Min.	1.20%
Crude Fat	Min.	5.00%
Crude Fiber	Max.	3.50%
Calcium (Ca)	Min 0.70% ..	Max. 1.20%
Phosphorus (P)	Min.	0.80%
Sodium (Na)	Min. 0.20% ..	Max. 0.50%
Chromium (Cr)	Min.	0.2 ppm
Selenium (Se)	Min.	0.30ppm
Zinc (Zc)	Min.	184ppm

INGREDIENTS

Corn, Soybean Meal, Ground Wheat, Dried Whey, Fish Meal, Wheat Middlings, Potassium Chloride, Vegetable and Animal Fat (preserved with BHT), L-Lysine, vitamin A acetate in gelatin, D-Activated Animal Sterol, dl-Alpha Tocopheryl Acetate, Vitamin B12 Supplement, Menadione Sodium Bisulfite Complex, Riboflavin Supplement, d-Calcium Pantothenate, Thiamine Mononitrate, Niacin Supplement, Pyridoxine Hydrochloride, Folic Acid, d-Biotin, Zinc Oxide, Ferrous Sulfate, Manganous Oxide, Ethylenediamine Dihydriodide, Sodium Selenite, Copper Sulfate, Magnesium Oxide, Chromium Tripicolinate, L-Carnitine, Choline Chloride, Zinc Proteinate, Manganese Proteinate, Copper Proteinate, Natural and Artificial Flavors Added, L-Tryptophan, Dicalcium Phosphate, Salt and Calcium Carbonate.

MIXING DIRECTIONS: This diet should be fed as a pelleted complete feed. This feed is recommended for developing show pigs where the cost of gain is important, but not of primary concern. This will supply 200 ppb of chromium, plus other nutrients.

WARNING

Withdraw 7 days prior to slaughter.

CAUTION: In order to obtain the desired performance results, the animals should be self fed.

Manufactured By:

ASSOCIATED FEED AND SUPPLY

Turlock, CA95380

Net Weight 50 Lbs. (22.68kg) or Bulk

Rev. 4-14-04

Guaranteed Analysis- What we guarantee is in this bag of feed.

Caution:
Super important to read and keep away from other animals

Manufactured By:
Who made the feed and how much is in the bag.

Medication-
Look for withdrawal information at bottom of tag

Ingredients – All tags must list in the order of most to least. For example Corn is 1st ingredient, and Calcium Carbonate is the last.

Feeding Directions- this will guide you with the amount of feed you should be feeding your animal

Withdrawal information:
How long this product must be out of the animals system prior to harvest



ShowMaker Swine Feeding Guidelines

Paylean Option

Receiving Phase

40-100 Pounds

- Receiving Diet 2 to 4.5 pounds per day, hand fed to introduce the new diet. Increase to free feeding after 5 to 7 days.

Growing Phase

100 to 200 pounds

- Showmaker Swine Complete
- Feed free choice to allow the animals to reach their genetic potential. One can also hand feed at a rate of 4 to 8 pounds per day.

Show Finish Phase

200 to 240 pounds – Approximately 30 days prior to show

- Showstopper – A complete feed with a 9 gram level of Paylean.
- Feed free choice to animals needing additional weight gain and muscle development. Hand feed to animals that need a more controlled gain for their frame size.

OR

- Showmaker Swine Complete and OptiLean 430 Plus
- Feed free choice Showmaker Swine Complete and top dress with OptiLean 430 Plus. OptiLean 430 Plus is a concentrated Paylean product that can be added to the animals diet. OptiLean 430 Plus allows you the ability to feed Paylean at different rates. One scoop of OptiLean 430 Plus will allow you to achieve 4.5grams.

OR

- Tune Up and OptiLean 430 Plus
- Feed free choice Showmaker Swine Complete and top dress with OptiLean 430 Plus. OptiLean 430 Plus is a concentrated Paylean product that can be added to the animals diet. OptiLean 430 Plus allows you the ability to feed Paylean at different rates. One scoop of OptiLean 430 Plus will allow you to achieve 4.5grams.

Holding Phase (***)Please note not all animals need to be held.)

- Showmaker Swine Complete 3 to 4 pounds per day
- Top Dress with Showdown at a rate of 4 to 8 ounces per day. Showdown is a 46% protein supplement.
- Top Dress with Showmaker Bloom at a rate of 4 to 8 ounces per day. Showmaker Bloom is a 99% Dry Fat supplement that can be fed to maintain proper energy intake.

The information given is to be used as a **GUIDELINE**; the feeder and the animal will help determine the proper feeding program. Please note all animals are individual and will respond differently to the feeding program. Best of success to all of the exhibitors!



ShowMaker Swine Feeding Guidelines Non PayLean Option

Receiving Phase

40 to 100 pounds

- Receiving Diet 2 to 4.5 pounds per day, hand fed to introduce the new diet. Increase to free feeding after 5 to 7 days.

Growing Phase

100 to 200 pounds

- Showmaker Swine Complete
- Feed free choice to allow the animals to reach their genetic potential. One can also hand feed at a rate of 4 to 8 pounds per day.

Show Finish Phase

200 to 240 pounds – Approximately 30 days prior to show

- Showmaker Swine Complete
- Feed free choice to allow the animals to reach their genetic potential. One can also hand feed at a rate of 4 to 6 pounds per day.
- Top dress with Showdown at a rate of 4 to 8 ounces per day. Showdown is a 46% protein supplement.
- Top dress with Showmaker Bloom at a rate of 4 to 8 ounces per day. Showmaker Bloom is a 99% Dry Fat supplement that can be fed to maintain proper energy intake.

OR

- Showkaer Tune Up
- Feed to animals that need to have a softer look at a rate of 5 to 8 pounds per day.
- Top dress with Showdown at a rate of 4 to 8 ounces per day. Showdown is a 46% protein supplement.
- Top dress with Showmaker Bloom at a rate of 4 to 8 ounces per day. Showmaker Bloom is a 99% Dry Fat supplement that can be fed to maintain proper energy intake.

Holding Phase

(*** Please note not all animals need to be held. ***)

- Showmaker Swine Complete 3 to 4 pounds per day.
- Top dress with Showdown at a rate of 4 to 8 ounces per day. Showdown is a 46% protein supplement.
- Top dress with Showmaker Bloom at a rate of 4 to 8 ounces per day. Showmaker Bloom is a 99% Dry Fat supplement that can be fed to maintain proper energy intake.

The information given is to be used as a **GUIDELINE**; the feeder and the animal will help determine the proper feeding program. Please note all animals are individual and will respond differently to the feeding program. Best of success to all of the exhibitors!

S h w M a k e r

High Performance Swine Feeding Program

When determining your finishing ration prior to the fair it is important to decide whether Paylean is right for your pig. Paylean is approved to be fed to market hogs at levels of 4.5 to 9 grams per ton from the last 90 lbs of gain prior to slaughter. Paylean can be a very useful and powerful tool when fed correctly.

The following are two Paylean feeding regimes offered by Associated feed.

Option 1 – ShowMaker ShowStopper

A complete feed containing Paylean at a rate of 9 grams/ton. This complete swine feed requires no mixing. Hand feed or free feed.

Option 2 – Optilean 430 Plus

A concentrated Paylean Top Dress product. Must be mixed with feed. You may need to supplement with Showdown to increase lysine level, depending on amount of feed the pig is consuming.

Paylean Level	Complete or Tune Up	Optilean 430 Plus
4.5 g/ton	Free choice or 4 to 6 lbs	1 Scoop per day
9 g/ton	Free choice or 4 to 6 lbs	2 Scoops per day

Caution: Pigs fed Ractopamine HCL are at increased risk for exhibiting the downer pig syndrome (also referred to as “slows” or “suspects”). Pig handling methods to reduce the incidence of downer pigs should be thoroughly evaluated prior to initiating use of Ractopamine HCL. Not for use in breeding swine.

ELANCO * AF0602-25B

**For Use in Finishing
Swine Feeds Only**

Paylean® 9

**Ractopamine
Hydrochloride**

*

**Net Weight 25 lbs
(11.34 kg)**

Type A Medicated Article

Do not feed undiluted.

Active Drug Ingredient: ractopamine hydrochloride - 9 g per lb (20 g per kg)

Important: Must be thoroughly mixed into feeds before use. Follow label directions.

Indication: For increased rate of weight gain, improved feed efficiency and increased carcass leanness in finishing swine, weighing not less than 150 lbs, fed a complete ration containing at least 16% crude protein for the last 45 to 90 lbs of gain prior to slaughter.

Appropriate Concentration of Ractopamine in Type C Medicated Feed
4.5 to 9.0 g/ton* (5 to 10 ppm)
* No increased benefit has been shown when ractopamine concentrations in the diet are greater than 4.5 g/ton (5 ppm).

Inert Ingredients: Ground corn cobs.

Variable	Last 45 lbs of body weight gain		Last 90 lbs of body weight gain	
	4.5 g/ton ractopamine	9.0 g/ton ractopamine	4.5 g/ton ractopamine	9.0 g/ton ractopamine
Carcass Fat	↓ ^a	↓ ^a	↓ ^a	↓ ^a
10th Rib Backfat (3/4 location)	NC	NC	NC	NC
Last Rib Backfat (midline)	NC	NC	NC	NC
Lean Eye Area (10th Rib)	↓ ^a	↓ ^a	↓ ^a	↓ ^a
Rate of Lean Gain	↓ ^a	↓ ^a	↓ ^a	↓ ^a
Efficiency of Lean Gain	↓ ^a	↓ ^a	↓ ^a	↓ ^a
Dressing Percentage	NC	↓ ^a	↓ ^a	↓ ^a

NC= No Change, ↓ = increased, ↓ = decreased.
^a Improvement was observed only in pigs weighing less than 250 lbs.

Mixing Directions: Thoroughly mix Paylean 9 Type A Medicated Article into one ton of appropriate feed ingredients according to the table below to obtain the proper concentration in the Type B Medicated Feed (maximum 4920 g/ton).
 The following table gives examples of how some Type B Medicated Feed concentrations can be prepared:

Pounds of Paylean 9 To Add Per Ton To Make a Type B Medicated Feed	Resulting Ractopamine Concentration in Type B Medicated Feed grams/pound
100	0.45
200	0.90
300	1.35
400	1.80

Thoroughly mix Paylean 9 Type A Medicated Article into one ton of complete swine feed according to the table below to obtain the proper concentration in the Type C Medicated Feed. Prepare an intermediate pre-blend of the premix prior to mixing in a complete feed. Thoroughly mix the required amount in a convenient quantity of feed ingredients, then add to the remaining feed ingredients to make a ton of complete feed.

Pounds of Paylean 9 To Add Per Ton of Type C Medicated Feed	Resulting Ractopamine Concentration in Type C Medicated Feed
0.5	4.5 grams/ton (5 ppm)
1.0	9 grams/ton (10 ppm)

Feeding Directions: Feed continuously as the sole ration to finishing swine weighing not less than 150 lbs for the last 45 to 90 lbs (group average) of weight gain prior to slaughter.

CAUTION: Ractopamine may increase the number of injured and/or fatigued pigs during marketing.
 Not for use in breeding swine.

WARNING: The active ingredient in Paylean, ractopamine hydrochloride, is a beta-adrenergic agonist. Individuals with cardiovascular disease should exercise special caution to avoid exposure. Not for use in humans. Keep out of the reach of children. The Paylean 9 formulation (Type A Medicated Article) poses a low dust potential under usual conditions of handling and mixing. When mixing and handling Paylean, use protective clothing, impervious gloves, protective eye wear, and a NIOSH-approved dust mask. Operators should wash thoroughly with soap and water after handling. If accidental eye contact occurs, immediately rinse eyes thoroughly with water. If irritation persists, seek medical attention. The material safety data sheet contains more detailed occupational safety information. To report adverse effects, access medical information, or obtain additional product information, call 1-800-428-4441.

Store at room temperature. Avoid Moisture.
 Expiration Date and Lot Number are printed on the bag. Not to be used after the expiry date.
 Manufactured for: **Elanco Animal Health**
 A Division of Eli Lilly and Company
 Indianapolis, IN 46285, USA

To report adverse effects, access medical information, or obtain additional product information, call 1-800-428-4441.
 *Elanco®, Paylean® and the diagonal color bar are trademarks of Eli Lilly and Company.
 YM19083DEAMM (V03-03-2006)
 BGG090



Impact and Use of PAYLEAN in Market Pigs

What is Paylean?

Paylean is a trademark name for the feed additive Ractopamine. Ractopamine alters how the feed that pigs consume is used for growth. Ractopamine directs more nutrients toward muscle growth and less towards fat synthesis. It is among a group of compounds called phenethanolamines. Paylean is neither a hormone, steroid, antibiotic nor a product of biotechnology. Paylean was approved for use by the Food and Drug Administration (FDA) in December 1999, as a swine feed ingredient to increase the rate of gain to improve feed efficiency and improve carcass leanness. It is approved to use in swine for the last 90 pounds of gain or the last 45 days, in conjunction with feeding a complete ration of 16% crude protein. Through the drug approval process, the FDA determined that Paylean meets stringent human food safety criteria and is safe for pigs when used according to the label.

Can Paylean be used in Show Pigs?

Yes, because this product is approved for use in swine, it can be used with show pigs. However, when using this product in show pigs, all label directions must be followed. Using a feed additive in any way other than identified on the label is known as "off-label" use, and is illegal. All feed additives can only be used exactly as indicated on the label. Specifically, some of the label restrictions that must be followed are:

- Paylean may only be used in swine.
- Paylean must be included in a complete ration containing at least 16% crude protein.
- Paylean premixes cannot be fed undiluted or used as a topdressing.

What will Paylean do?

- Decreased 10th rib fat depth approximately .1 inches.
- Increased loin eye area approximately .7 square inches.
- Increased dressing percent approximately 1%.
- Increased calculated percent lean approximately 1.3%.
- Paylean did not negatively affect meat quality traits.

To maximize the carcass improvement response from feeding Paylean consider feeding it at a rate of 9g/ton, beginning five to six weeks before the show.

Are there any concerns with feeding Paylean to Show Pigs?

When feeding Paylean to any pigs, the total dietary lysine, the first limiting amino acid for swine, should be increased .30% from normal feeding levels. Because the growth of muscle in pigs fed Paylean is much higher than in other pigs, a feeding program with higher levels of lysine is needed to support the rapid lean growth.

Paylean® should only be used in rations containing percentage of crude protein similar to those found in rations for commercial hogs.

Because many show pigs have the genetic base to be leaner and heavier muscled than average hogs, care must be exercised when handling these hogs. Heavier muscled hogs require more time to move. Use of Paylean® will further enhance the muscling in these hogs, thus even more care must be taken in handling. Avoid pushing the hogs to move any faster than they want to move and avoid using force to move the hogs. Additional reasons for taking extra care in handling these hogs include weather conditions of extreme heat that are often present during the show season and the possibility of the hogs being stress gene carriers.

Do NOT restrict water intake to pigs fed Paylean®. All animals should have plenty of clean water available at all times. Because muscle is about 75% water, the increased muscle deposition in pigs fed Paylean® increases their need for water even more.

Summary

Paylean® is a safe, relatively inexpensive way for youth producers to improve the carcass characteristics of their show pigs. Additional management may be necessary to adjust rations and appropriately handle show pigs fed Paylean®. Paylean® should only be used according to label directions.

* Technical data adapted from Elanco Paylean® Technical Summary.



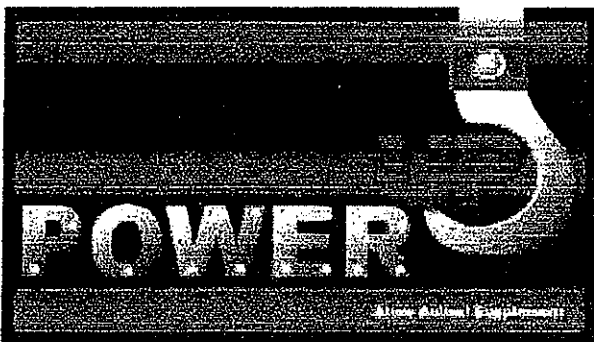
Swine Management Tips

- Be prepared for new pigs arrival by having the facilities clean and disinfected.
- Group pigs by size at arrival. Avoid overcrowding.
- In cold weather provide dry, draft-free area, and supplemental bedding. In hot weather provide total shade and misters to prevent sunburn and poor performance.
- ***SUPER IMPORTANT!*** Provide fresh, clean, cool water at all times.
- For the first two weeks, ShowMaker Receiving Diet containing CSP 250 this helps keep the pigs healthy in times of stress.
- When you change feed from one to the next, do it over a 2-3 day period by mixing both feeds together.
- Closely monitor for any signs of illness, consult with your veterinarian as needed. Sometimes medication is required to get your pig back to normal. Observe label and withdrawal periods.
- Treat pigs for internal and external parasites. Use a broad-spectrum wormer, and treat at least once again using an anthelmintic that is proven against whipworms.
- Ask your project leader about a booster vaccination program that should include erysipelas.
- Closely monitor the weight of the pig throughout your project. Knowing the pig's average daily gain lets you predict more precisely the weight at the pig's endpoint.
- Condition your pig for the show by exercising daily. Use the exercise period to practice showmanship. This prevents overstressed and overheated hogs at the show.
- Rinse the pig daily the last three weeks prior to the show. Brush on a conditioner or lotion for 5-10 minutes and rinse off.
- Clip hogs 5 to 7 days prior to show day, using 1/2 to 5/8" guard on the clippers. Remember to look for any areas that need to be touched up.
- Use a water bottle to keep the pig cool during the show.
- You may need extra panels at the show to prevent pigs from fighting.

S h  w M a k e r

Associated Feed
1-800-540-3333

Sunglo Power-Up



Sunglo Power UP is an extruded (fully cooked) mini-nugget that contains a blend of high-quality energy sources to help optimize show ring appearance. Sunglo Power UP can be mixed with a

high quality show feed to enhance calorie intake of pigs, lambs, beef calves and goats being conditioned for show or sale.

The high quality vegetable oil sources, including flax seed and soybeans, provide a blend of Omega 3 and Omega 6 fatty acids. This blend will improve bloom, haircoat, skin condition and overall appearance.

Advantages:

- Improved palatability allows for quick adaptation to high energy diet
- Small mini-nugget blends easily into pelleted, texturized or meal show feeds
- Contains a blend of Omega 3 and Omega 6 fatty acids for improved haircoat and skin condition
- Does not contain added copper, and thus can be fed safely to lambs

Feeding Directions:

Sunglo Power UP should always be added to a fortified diet. Start by adding Sunglo Power UP slowly to the daily diet (2oz. daily) and work up to the desired feeding level

Normal Daily Feeding Level after adaptation period is:

1/4% to 1/2% of animal body weight

associated*feed*



Jr. Livestock Camp

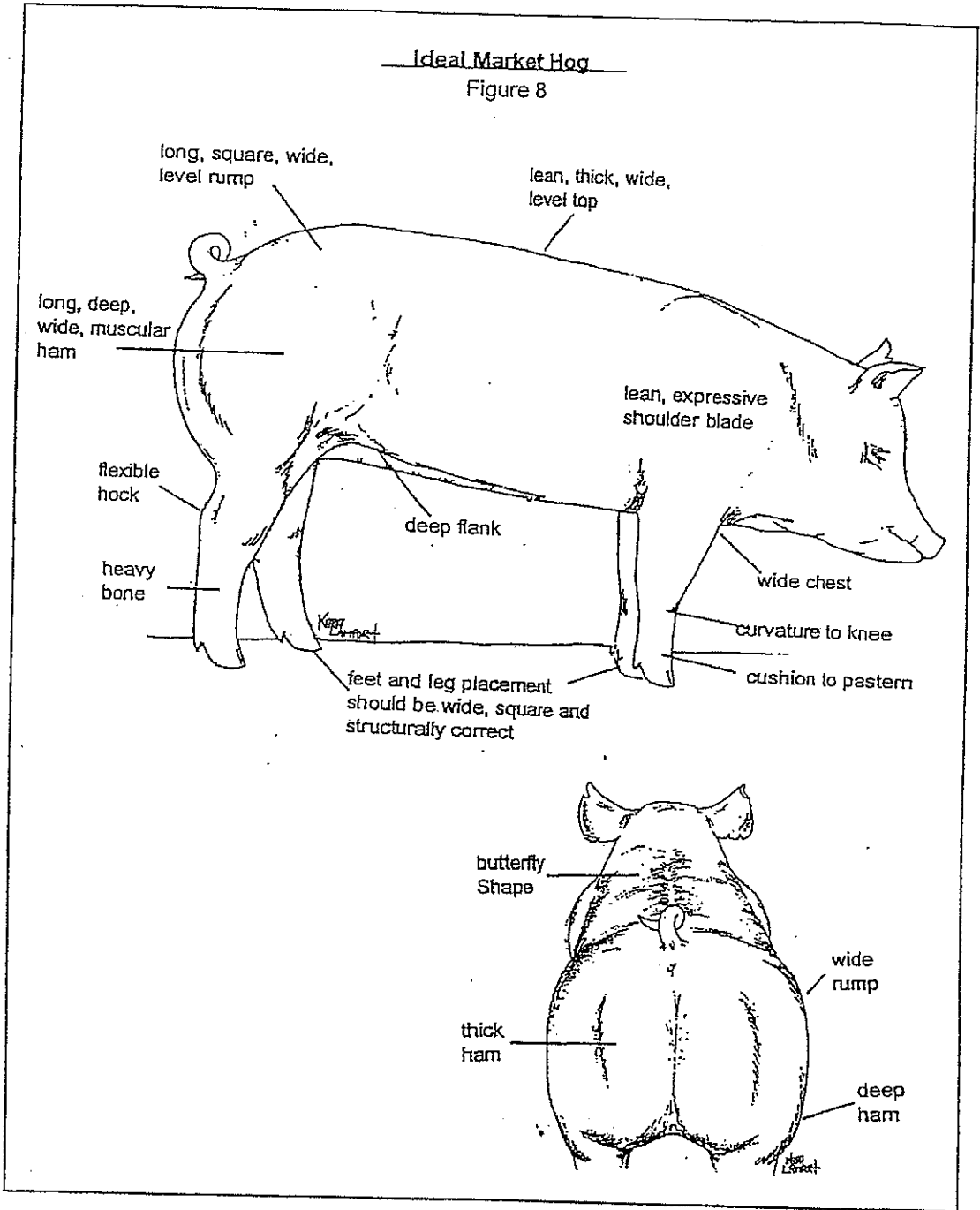


Selection & Evaluation

1-800-540-FEED
www.associatedfeed.com

Ideal Market Hog

Figure 8



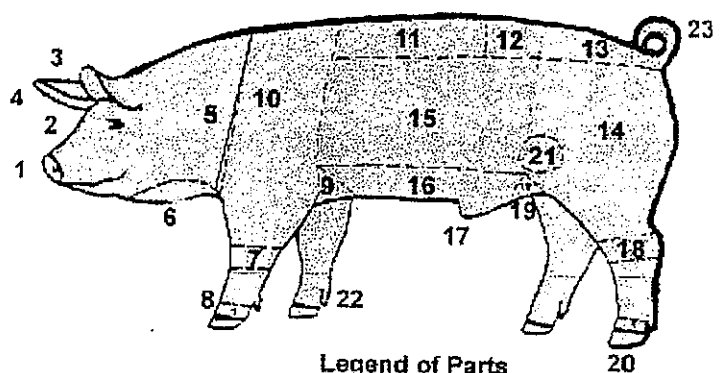
EVALUATING MARKET SWINE

By Chris T. Boleman, Texas A&M University

Introduction

Market swine evaluation emphasis continues to change rapidly. However, there are still some basic principles to understand and implement to more accurately evaluate market swine.

Figure 1 shows parts of market swine that are important to know before evaluation areas can be discussed. It is imperative to learn each of these parts before understanding how to evaluate market swine correctly.



Legend of Parts

1. Nose or snout	13. Rump
2. Face	14. Ham
3. Ear	15. Side
4. Poll	16. Belly or underline
5. Neck	17. Sheath
6. Jowl	18. Hock
7. Knee	19. Rear flank
8. Pastern	20. Foot or toe
9. Fore flank	21. Stifle
10. Shoulder	22. Dew claw
11. Back	23. Tail
12. Loin	

Figure 1: Parts of Swine

Evaluating Market Swine

Market swine are placed on five basic areas:

- ✓ Muscle
- ✓ Leanness
- ✓ Growth
- ✓ Volume
- ✓ Structural Soundness

Muscle

Muscle refers to meat or the amount of meat within each individual market swine. Muscle can be evaluated in several areas. When viewing the side, it is important to look for the expression through the shoulder and forearm. However, it is the view from behind and down the top that gives the evaluator the most accurate view. Remember, muscle is bulging and roundish in shape. Thus, when viewing a hog from behind it is imperative to look for these types of shapes down the top, from stifle and throughout all portions of the ham. Figures 2ab and 3ab show two market hogs with distinct muscle pattern differences.

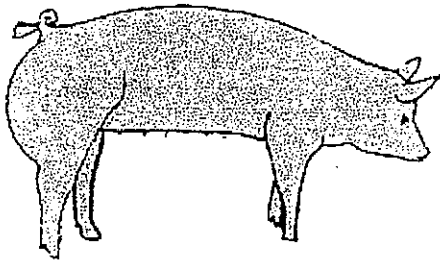


Figure 2a. Muscular Swine (side view)

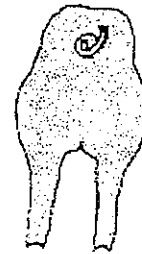


Figure 2b. Muscular Swine (rear view)

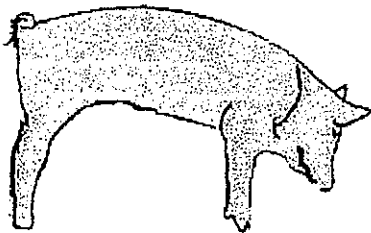


Figure 3a Light muscled swine (side view)



Figure 3b Light muscled swine (rear view)

Leanness

Market swine continue to become leaner and leaner each year. They need to be as lean as they can while maintaining muscle, body volume, growth, and structural soundness. As market swine continue to become genetically leaner, they can sometimes become slower growing due to lack of body volume and because they become too tightly wound in their skeletal design.

Nonetheless, when viewing market swine for leanness, there are many areas to evaluate for fat deposition. These include through the jowl, over the blades, behind the shoulder, along the loin edge, through the lower 1/3 of the body cavity, the flank, and the seam of the ham.

Growth

Market swine must have the ability to grow. Large statured, big framed, skeletally extended hogs are preferred because they are much more flexible as they increase in weight. In other words, as they increase in total weight, they are not gaining excess fat, but meat instead.

Percent Lean

Using the three above factors one can derive the percent lean formula. Percent lean is currently used to determine prices on live market swine. The higher the percent, the higher the premium each hog can be able to demand when sold for slaughter.

Percent Lean Factors and Adjustments- Start with a base of 50%

Factors	Base	Adjustments
10 th Rib Back Fat (BF)	.8 inches	For every .1 inch above subtract 1% For every .1 inch below add 1%
Loin Eye Area (LEA)	5.0 in ²	For every .1 in ² above add .2% For every .1 in ² below subtract .2%
Live Weight (LW)	240 lbs	For every 10 lbs above 240 subtract 2% For every 10 lbs below 240 add .2%

Example:

			<u>50% Base</u>
10 th Rib Back Fat	1.0 in.	=	- 2.0 BF
Loin Eye Area	7.0 in.	=	+2.0% LEA
Live Weight	240 lbs	=	<u>0.0% LW</u>

*Notice 10th rib backfat is the major factor in determining percent lean.

USDA Grade

In addition to percent lean, there is also a USDA Grade. The formula for figuring USDA grade is $4 \times \text{last rib backfat} - \text{Muscle Score}$.

The muscle scores range from 1-3 with 3 being thick, 2 moderate, and 1 is thin. Figure 4 shows the muscle scores from swine carcasses.



Figure 4. Muscle scores used to determine U.S. Grades

Body Capacity/Body Volume

Market swine will grow quicker and more efficiently with body capacity. Body capacity is internal dimension. This dimension can be visually evaluated by viewing swine for the width through their blades, the spring to their rib cages, and the width they possess through their chest floors.

Structural Soundness

There is no doubt, market swine do not have to be as correct in their structural design as breeding swine. However, major structural defects can hamper the ability of market swine to gain and grow effectively. Market hogs need to have adequate slope through the shoulder region, loose in their hip or spine and adequate flex to their rear hocks.

Conclusion

Market swine must be complete. They must be able to grow quickly, exhibit superior muscling while remaining lean designed. For a hog to thrive, it must also be loose in its design and have sufficient internal dimension (body volume) to grow quickly and be more desirable converters of feedstuffs they consume.

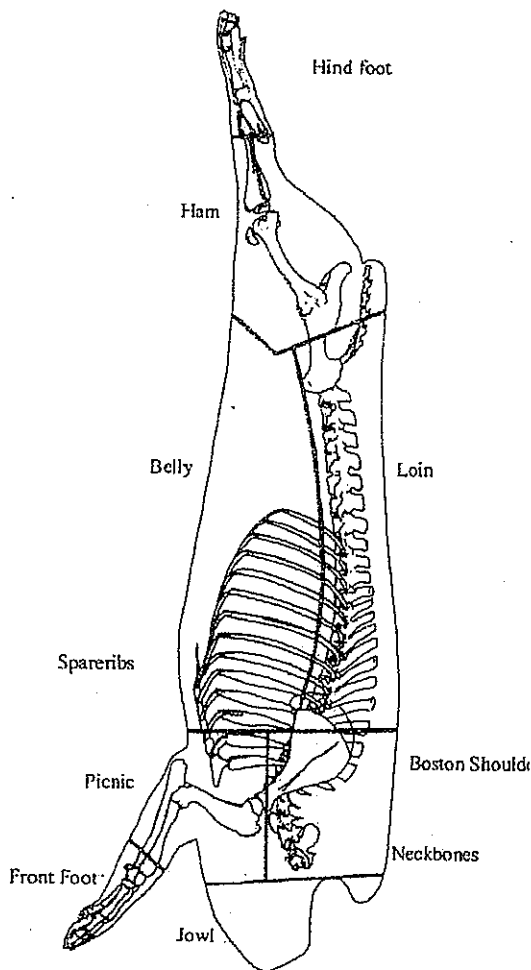
Market Classes - Grades of Swine

There is only one set of grades for swine. These grades are affected by quality of lean, belly thickness, and expected yield of the ham, loin, picnic and boston butt.

Slaughter Hog Grades

Grades include:

US No. 1	Highest Yield
US No. 2	
US No. 3	
US No. 4	Lowest Yield
Utility	



- Average Live Wt. = 260
- Average Dressing Percentage = 72%
- Average Back Fat Thickness = .4 -.8
- Average Loin Eye Area = 4.8
- Percentage Carcass Muscle = 50%
- Percentage of Lean Cuts = 59%
- Percentage Ham and Loin = 45%
- Percentage of Ham = 24%
- Swine Carcass Grade - based on yield of lean cuts
 - U.S. No. 1 = 60.4% and over
 - U.S. No. 2 = 57.4-60.3%
 - U.S. No. 3 = 54.5-57.3%
 - U.S. No. 4 = Less than 54.4%

Swine Facts

Selecting a Club Pig , a Wonderful Challenge!

By Warren Beeler, Caneyville, KY

When looking at a pig at 40 pounds, it is indeed a challenge to find the one that can help to get you to the winner's circle. There are, however, several key points that you can always keep in mind when you are judging pigs as potential projects. It is no coincidence that these important points in selection also follow the growth pattern that hogs go through. Pigs grow frame first, put on muscle next, and then begin to get fat.

"Ground Up and Butt Forward"

It's critical as you start that you look at the pig one trait at a time, and that you look in the correct order. I believe that in market animals, we should always start at the ground and work up. Then, look at the rear and work forward. Anytime a hog gets more than 1/3 wider in their top than in the bottom 1/3 of their body, that is a red flag. In this case, he won't finish as good as he might appear.

First Trait - Muscle!

In evaluating muscle, we first look through the center of the ham. The thicker this center area of the ham, the better! Second, be sure to watch how wide the pig walks from behind. You can also check when he's standing to see the width between the rear legs. The wider the better!

Finally, we look down the top at the loin shape. A heavy muscled hog will have a butterfly shape in his loin. A light muscled hog will be shaped in an upside down "V", kind of like a roof top.

Second Trait , Production!

Today, show hogs must be extreme in muscle yet extreme in production. Capacity is critical. Again, we evaluate them from the ground up. They should be wide chested, uniformly deep, and above average in length. Length has become more critical as we move to heavier weights to delay fat deposition. These three dimensions MUST balance. Any unbalanced look, in which one dimension is lacking or overshadows another aspect, will hurt your chances in the show ring.

Third Trait , Leanness!

Leanness is normally the result of degrees of muscle and frame size. We want a big framed pig with a log of

muscle. Any deficiency in either muscle or frame will shorten the pig's maturity pattern, meaning the pig will begin getting fat at a lighter weight. Be careful, though, of super heavy muscled hogs that are low fronted and short bodied. This type of pig will get fat too early. Also, be careful of big framed hogs with no muscle. With this body type, pigs will also get fat early and also lack muscle. More fat and less muscle will get you defeated quicker than anything in the ring!

Soundness is Critical!

In order for pigs, even market hogs, to grow rapidly and efficiently, they must be structurally correct in sound. No matter how much muscle or frame that a hog has, you will have a hard time getting out of the placing pens if the hog has trouble walking correctly. Most judges review hogs from a negative perspective versus a positive standpoint. This means that if a hog is moving oddly off its front or back end, you get dropped from the running right out of the chute.

Pigs need to have big, square feet while taking a long stride. The length of a hog's stride is a great indicator as to the correctness of its hip and shoulder. Shorter strides mean less flexibility in these key joints in a hog, and pigs need to have flexibility in all of its joints. The pastern (lowest joint above the hoof) needs to be at a 45-degree angle with the hock at about a 22-degree angle for the best possible movement off a pig's back end. Again, we look at soundness ground up.

In closing, choosing the right pig at 40 pounds is a wonderful challenge for every FFA or 4-H member. To improve your ability in selecting club pigs, there is no substitute for looking at more and more pigs. Every pig is different and evaluating each one on its own merits is the key to successful evaluation.

Keep these key points in mind as you head to your next sale or to your local club pig breeder's farm. While these ideas are not everything there is to know about selecting pigs, following these guidelines will head you down the right road with your next project. Good luck with your show pig and maybe I'll see you in the winner's circle at the next big show!

associated_{feed}



Jr. Livestock Camp



Fitting

1-800-540-FEED
www.associatedfeed.com



Fitting Your Market Hog

Receiving Your Pig

Use an antibiotic the day you receive your pig. This lessens the effects of stress and change in environment on the animals.

Deworm your pig 7 to 10 days after you have obtained the pig. (Ivomec, Atgard, Safeguard, etc.). This practice should be repeated approximately every 30 days. Parasite control should include both external and internal parasites.

Pigs should have been vaccinated prior to purchase for Erysipelas, Rhinitis etc.

Sanitize hogs pen, a clean, dry, wind free location is essential for the animals well being. The pen needs a roof for protection from sunburning and rain.

When traveling from hog farms, or fairs sanitize your shoes and clothing before entering a controlled environment.

Preparing Your Pig For Show

Exercise will benefit the pig in the area of showmanship as opposed to weight control.

Training the pig with the selected driving equipment (pipe, cane or whip) is a MUST prior to the show.

It is important to schedule showmanship practice sessions 45 days before the show.

Rinsing and conditioning skin on a daily basis with weekly baths is encouraged. (hair conditioner)

When you are grooming and clipping your pig remember the goal is to maintain a "Natural" appearance. We recommend a #5 or #4 blade on the body and a #10 on the underline, neck, jowl and head. It is important to "blend" so there are no obvious lines.

Clip within 5 days before showing.

Hogs that have not been penned together must be introduced before going to the show or loading in the trailer.



Equipment

Pipe, Cane, Whip or Hog Panel/Board
Small Clippers
Soap, brush, towels & water hose
Feed pans, feed scoop, grain, waterer
Bedding, wheelbarrow, shovel, broom
Show Supplies

Show Day Supplies

Sprayer- H2O, purple oil, show sheen
Final Bloom, Grand Champion
Powder
Towel
Show brush
Driving utensil
Clean, neat clothing

Show Ethics

Quality Assurance is critical:

- *Remove all feed additives 30 days prior to the show
- *Do not administer any Antibiotics within the 30 days of the show without contacting a veterinarian.

associated_{feed}



Jr. Livestock Camp



Showmanship

1-800-540-FEED
www.associatedfeed.com

The Basics of Swine Showmanship

If you can master these skills you will be on your way to a blue ribbon!

Before the Show

- Make sure your pig is clipped and clean.
- Be prepared. Be in proper attire and have your cane and brush ready.
- Know when your class is.
- RELAX!! Showmanship is fun. Just do your best.

In the Ring

- Be showing as you walk through the gate.
- Always keep your eyes on the judge.
- Always keep your pig in between you and the judge.
- Stay at a distance of 10-15 feet from the judge.
- Walk at a slow steady pace, never run.
- While showing you should be in a slightly crouched, relaxed position
- The cane is used to as a steering wheel. Try not to hit your pig, but instead direct it with the cane in the direction you want it to go.
- Keep you pig off the fences.
- Drive your hog. This means to make a pass in front of the judge letting your pig walk out. Make passes about 10-15 feet long and then repeat always keeping an eye on the judge.
- Be aware of others around you. Showmanship is anticipating what your pig is going to do and being able to respond.

In the Holding Pens

- When the judge points at you he is seeing how much control you have over your hog. He does this by asking you to pen your pig. Drive your pig to the holding pen, keeping eye contact with the judge, and put your pig inside.
- Keep your eyes on the judge.
- While in the pen brush the your pig to make sure it is clean.
- While in the pen you can mist you pig with water and give it a drink.
- Position you hog so that it is ready to walk right out the gate.
- When exiting the pen, be aware of the judge and where your pig is.
- Close the gate behind you.

Showmanship is about being a confident showman. Be relaxed, be calm, and have fun!

Swine Showmanship Questions

The final placings in showmanship are decided by questions. Here is a sample of some of the kinds of questions you should be prepared to answer in the showing.

- Are pigs monogastrics or ruminants?
- What does LEA mean and what size LEA does your pig have?
- What is an EPD?
- How does the future look for the seedstock producer?
- Picture in your mind the average market hog today. How could the average market hog today be made better?
- If you could change something about your pig what would it be and why?
- Explain pork quality.
- What might you tell another young person considering having a 4-H or FFA livestock project?
- Why is it important that a pig be sound on its feet and legs?
- What is the ear notch of your pig?
- Why are pigs ear notched?
- Is your pig a gilt or a barrow?
- What is the main ingredient in hog feed?
- What kind of feed did you use? How much did it cost?
- What percentage of protein does your feed have?
- What does NSR stand for?
- Where is the NSR located?
- How many nipples should a gilt have?
- Why do we dock tails?
- What does your pig weigh?
- What is the breeding of your hog?
- How much did your hog cost?
- What are some of the good and bad points of your pig?
- What is the average back fat of a hog?
- What is the number one pork producing state?
- What does NJSA stand for?
- What is the average daily gain of your hog?
- How many pounds of feed does your hog eat each day?
- What are the maternal breeds of pigs?
- What are the market breeds of pigs?
- What is hybrid vigor?
- What is the retail value of pork per pound?

Resources: www.nationalswine.com, www.showpigs.com, www.porkboard.org,
www.nppc.org, www.thepigsite.com, www.ansi.okstate.edu/breeds/swine/

associated*feed*



Jr. Livestock Camp



Appendix

1-800-540-FEED
www.associatedfeed.com

Swine Wrap-Up Questions

1. What is the active ingredient in Paylean?
a. Ractopamine b. Radon c. Monensin d. Steroid
2. What does CSP stand for?
a. CTC, Sulfa, Penicillin
b. Cryptonite, Sulfa, Penicillin
c. Clostridial, Sulfur, Porsine
d. Calcium, Sodium, Phosphate
3. Which ShowMaker diet has a withdrawal time?
a. Receiving diet b. Showstopper c. Complete d. Show 100
4. Which ShowMaker complete feed has paylean included in the ration?
a. Complete b. Show Stopper c. Show 100 d. Opti-lean
5. What is the highest rate of paylean that you can feed?
a. 18 lbs/ton b. 18 g/ton c. 9 lbs/ton d. 9 g/ton
6. What is the paylean level in one scoop of optiLean 430 plus?
a. 4.5 g/ton b. 9 g/ton c. 18 lbs/ton d. 4.5 lbs/ton
7. How many stomach compartments does a monogastric have?
a. 3 b. 2 c. 1 d. 4
8. What three things are needed to get you to the winner's circle?
a. Good Genetics, Good Management and Good Feed
b. Expensive Genetics, Good Management and a Good Fit Job
c. Out of state genetics, Good Feed and Water
d. Good Genetics, Good Showmanship and Good Feed
9. What ShowMaker product contains 99% fat?
a. Bloom b. Power-up c. Tune-up d. Showdown
10. How far away from the judge should you keep your pig in the ring?
a. 2-5 feet b. 10-15 feet c. doesn't matter d. arms reach

associated feed

Feed Identification

1. _____
2. _____
3. _____
4. _____
5. _____
6. _____
7. _____
8. _____
9. _____
10. _____

Grains

- Crimped Oats
- Whole Cottonseed
- Beet Pulp
- Rolled Corn
- Rolled Barley
- Soyhull Pellets
- Whole Oats
- Wheat Millrun
- Soybean Meal
- Distillers Grain
- Alfalfa Pellets
- Canola Pellets
- Whole Corn
- Salt
- Rice Bran
- Almond Hulls
- Dried fat
- Whole Oats
- Fish Meal

Hay Identification

1. _____
2. _____
3. _____
4. _____
5. _____

- Alfalfa
- Oat
- Timothy
- Grass
- Fescue
- Bermuda grass
- Orchard grass
- Alfalfa grass mix
- Oat and Pea

Associated Feed

1-800-540-FEED or www.associatedfeed.com



ShowMaker Math Lesson

Swine

You bought a project hog that weighed 73 lbs. You weighed the hog 108 days later and it weighed 261 lbs. You used 563 lbs of ShowMaker Swine Complete. It cost you 13.75 per 50 lb sack.

1. What was the Average daily gain?
2. What was the average daily feed intake?
3. How many pounds of feed did it take per pound of gain?
4. What is your cost of feed per pound?
5. What is your feed cost per day?
6. What is your total feed cost for the project?

