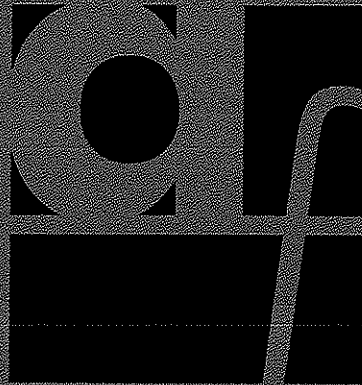


**associated** feed

*800•540•FEED*  
*www.associatedfeed.com*



**Associated Feed**

**Beef**

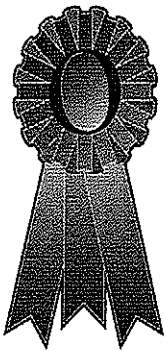
**associated** *feed*



## Sales Team

Andrea Kaldhusdal	(661) 332-9915
Lily Siebert	(209) 604-7479
Ron Luis	(209) 531-5936
Brady Otto	(530) 521-9054

# Show Maker



## Junior Awards Program

**Associated Feed** – Founded in 1971, has been dedicated to the livestock feed industry for over thirty years. With a focus on excellent performance and customer service, AFS has long been recognized as a reputable source of poultry, swine and livestock feeds.

Associated Feed is proud to offer a “full line” of feed products to meet the diverse needs of our customers. A family owned business that has the flexibility to deal with the ever-changing needs of the livestock industry, Associated Feed and Supply strives to provide quality products at a fair price along with excellent service.

**Akey and AFS** – Associated Feed and Supply and Akey have teamed up to provide “high Tech” show diets that Maximize Performance. The MP line of Specialized Show Diets is designed to be the lead way with nutrition that meets the demands of the novice or serious show contender.

Extensive research has allowed Akey Inc., a leader in livestock feed nutrition to develop time tested show diets developed for your junior livestock project. The MP Diets have been designed to allow animals to reach their true maximum genetic potential.

**Specialized Show Diets** are the standard when evaluating nutrition and performance for the show ring. Be sure to watch for new product alerts and ask your dealers for new information. We are on the cutting edge of show animal nutrition and as new products and information become available we want make sure you are informed.



For more information about our program, or to find you're nearest dealer, you can reach your Livestock Nutrition and Management Specialist by calling (800) 540-FEED.

## Let's get associated!

**Junior Awards Program** – All junior members competing at Junior Livestock Shows are eligible to participate. Please

complete the awards application upon completion of the fair if you are eligible to receive an award from Associated Feed. Your local Associated feed dealer can request the application for your completion.

Applicants are eligible if they have fed Associated Feed, Meatmaker, or Specialized Show Diets as their primary feed for the animal that received the award. Applicants that receive an award for an animal agree not to use the animal in any other advertisement for a competing feed company, doing so will forfeit the award.

Participants may collect cash awards paid by check from Associated Feed by exhibiting either the Supreme Grand Champion or Reserve Supreme Grand Champion in their respective livestock division. Awards are eligible for market animals only. Requests for awards should be presented within 60 days to:

**Junior Awards Program**  
c/o Associated Feed  
Attn: Shelbey  
P.O. Box 2367  
Turlock, CA. 95381

Participants are asked to send proof of purchases or verification from the local dealer along with a high quality photo of the winning animal. By submitting your photo and application you provide a release for advertising to Associated Feed.

<b>Beef</b>	Grand Champion	\$ 200.00
	Reserve Champion	\$ 100.00
<b>Swine</b>	Grand Champion	\$ 100.00
	Reserve Champion	\$ 50.00
<b>Sheep</b>	Grand Champion	\$ 100.00
	Reserve Champion	\$ 50.00
<b>Market Goats</b>	Grand Champion	\$100.00
	Reserve Champion	\$ 50.00
<b>Rabbits - Fryer</b>	Grand Champion	\$ 25.00
	Reserve Champion	\$ 15.00
<b>Poultry – Broilers</b>	Grand Champion	\$ 25.00
	Reserve Champion	\$ 15.00

# Junior Awards Program

Applicants Name \_\_\_\_\_ Phone \_\_\_\_\_

Address \_\_\_\_\_

City \_\_\_\_\_ State \_\_\_\_\_ Zip \_\_\_\_\_

***Show Level                      Show Date                      Show Name and Location (City & State)***

\_\_\_ County \_\_\_\_\_

\_\_\_ State \_\_\_\_\_

*\*JACK POTS NOT APPLICABLE*

Description of animal (kind, breed, weight), which won the award \_\_\_\_\_

**Supreme Grand Champion**       **Reserve Supreme Grand Champion**

***Associated Feed was the only brand of commercial feed fed in this project:***

Yes     No (if no attach full details of feeding program.)

Dealer Name \_\_\_\_\_ Phone \_\_\_\_\_

Dealer Signature \_\_\_\_\_

***Enclosed with this application are:***

Dealer verification for feed purchased. (Receipts or signature)

High quality photo for advertising purposes. Photos will not be returned and become Associated Feed property.

Short story describing information about project and explanation of feeding program.

With this application I consent to the use of my name and picture, information about my use of feeds, and my results for advertising and promoting the sale of its various products by Associated Feed and Supply and/ or its dealers, representatives or agents. I agree to participate in no other commercial feed company awards program for the animal specified in this application, doing so will result in forfeiture of the above award and any cost associated with collection of returned award along with advertising cost incurred. I am submitting this within the 60 day requirement.

Signature \_\_\_\_\_ Date \_\_\_\_\_

Signature of parent or guardian for persons under 18 years of age.

\_\_\_\_\_ Date \_\_\_\_\_

**associated**<sub>feed</sub>



---

Jr. Livestock Camp



# Feeds & Feeding

1-800-540-FEED  
[www.associatedfeed.com](http://www.associatedfeed.com)



## The Six Essential Nutrients

### **Protein**

Are made up of amino acids the building blocks for growth, finishing, reproduction, work, production and maintenance. There are multiple sources of protein, for correct nutrition and proper amino acid balance.

Examples of protein are: Soybean meal, Fishmeal, Alfalfa meal and Linseed meal are used as protein sources.

### **Carbohydrates**

They are used as a source of heat, energy and stored as fat in the body.

Examples of Carbohydrates: Grains – Rolled Corn, Whole Oats, Rolled Barley and Ground Wheat.

### **Water**

The most neglected nutrient. Water needs to be clean, cool and available free choice. Use electrolytes ( 4-Sure ) during stressful periods or prior to shows to get animals used to fair water.

Signs of dehydrated might include:

- Animals sides are sunken in
- Animals feces are dry and crumbly
- Animal won't eat

### **Fat**

Fat like carbohydrates provide a source of heat and energy. However fat provides more heat and energy than carbohydrates but takes more energy to break it down.

Examples: Vegetable fats and animal fat

### **Minerals**

Required for basic bodily functions and bone growth and density.

Provide salt free choice.

The Essential Minerals – Calcium, Phosphorous, Zinc, Selenium and trace minerals.

Other important minerals- Ammonium Chloride to prevent urinary calculi in Sheep and goats.

Some minerals can be toxic- Avoid excess copper in sheep diets to avoid toxicity.

### **Vitamins**

Required for immune system – to help maintain health and bodily functions.

Supplement Vitamin A, B12, E, and D to ensure proper intakes in the mixed feeds. Forages and sunlight also provide vitamins to be synthesized by your show animal.

**associated** feed

# Show Maker

## Beef Grower/Finisher

Complete feed for Show Cattle

205016

Improved feed efficiency; For reduction of incidence of liver abscesses caused by *Fusobacterium necrophorum* and *Corynebacterium*.

### ACTIVE DRUG INGREDIENTS

Monensin.....28g/ton  
Tylosin.....10g/ton

### GUARANTEED ANALYSIS

Crude Protein.....Min 12.88%  
Crude Fat.....Min 6.61%  
Crude Fiber.....Max 6.23%  
Ash.....Max 5.66%  
Calcium.....Min 0.62%.....Max 0.92%  
Salt.....Min 0.16%.....Max 0.66%  
Sodium.....Min 0.14%.....Max 0.34%  
Phosphorus.....Min 0.17%  
Potassium.....Min 0.84%  
Vitamin A.....Min 1240 iu/lb

### INGREDIENTS

Corn, Cane Molasses, Beet Pulp, Wheat Millrun, Distillers dried grains, Barley, Oats, Wheat - Ground, Cottonseed - Whole, Vegetable oil, Calcium Salts of long chain fatty acids, Calcium Carbonate, Salt, Modified Inositol, Urea, preservatives, Magnesium Oxide, Sulfur Elemental, Vegetable and Animal Fat, Monensin sodium, Zinc Sulfate, Tylosin, Niacin Supplement, Vitamin E Acetate, Manganous Oxide, Iron Sulfate, Copper Sulfate, Sodium Selenite, Yeast dried, Cholin Chloride, Magnesium Sulfate, Ethylenediamine dihydrochloride, Vitamin A Supplement, Mineral Oil, Cobalt Sulfate, Thiamine Mononitrate, Potassium Chloride, Artificial Flavor, Vitamin D3 Supplement.

**CAUTION:** Do not allow horses or other equines access to formulations containing Monensin. Ingestion of Monensin by equines has been fatal. Monensin-medicated cattle feed is safe for use in cattle only. Do not feed to lactating cows. Consumption by unapproved species may result in toxic reactions. Do not exceed the levels of Monensin recommended in feeding directions, as reduced average daily gains may result. (premixes and feed supplements) Feeding undiluted or mixing errors resulting in high concentrations of Monensin could be fatal to cattle. Must be thoroughly mixed in feeds before use; do not feed undiluted. Do not use in any finished feed (supplement, concentrate or complete feed) containing in excess of 2% bentonite. A withdrawal time has not been established for pre-ruminating calves. Do not use in calves to be processed for veal.

### FEEDING DIRECTIONS:

Feed to beef cattle at a rate of 25-30 pounds per head per day to achieve the levels of 5-30g/ton of Monensin not to exceed 360 mg per head per day and 6-10 g/ton Tylosin not to exceed 90 mg per head per day. Provide plenty of clean, fresh water at all times.

Product Code: 250005  
MANUFACTURED BY:  
Associated Feed & Supply Co.  
5213 W Main  
Turlock, CA 95380  
Net Wt. 50 lbs.

**Medication-**  
No withdrawal of these medications, if there is any withdrawal it will be on the tag.

**Guaranteed Analysis-** What we guarantee is in this bag of feed.

**Caution:**  
Super important to read and keep away from other animals

**Ingredients** – All tags must list in the order of most to least. For example Corn is 1<sup>st</sup> ingredient, and Vitamin D Supplement is the last.

**Feeding Directions-** this will guide you with the amount of feed you should be feeding your animal

**Manufactured By:**  
Who made the feed and how much is in the bag.

## ShowMaker Cattle Feeding Guidelines

### Getting started with your calf

- *ShowMaker Developer* makes an excellent creep feed for starting calves.
- Start your calf out gradually on *ShowMaker Developer*, if the calf is just starting on grain introduce at a rate of about 4 to 5 pounds per day divided equally between two feedings. If switching to *ShowMaker Developer*, blend with your current feed at about half the daily feeding.
- It is important to feed the calf to his desired show condition before limit feeding the calf and trying to hold his weight gain.
- Simple formulas to determine your calf's feeding needs begin by knowing your calf's weight.
  - Total weight gain needed= Desired show weight-Starting weight
  - Average daily gain=Total weight gain divided by the number of days between weight days.

### Feeding Guidelines for steers

If feed is medicated: be certain to read, follow and understand the label information that is attached for specific instructions. Not all medicated feeds require withdrawal time from slaughter, be sure to read your tag and follow directions.

- Developing Calves:
  - At the start of the feeding period fill calves on hay and gradually introduce them to *ShowMaker Developer* over several days, each day reduce the amount of hay and increase concentrates.
  - Increase feed amount by ½ to 1 pound of grain every third day until cattle are on full feed intake.
  - *ShowMaker Developer* should be fed at a rate of 2 to 3 % of the calf's body weight.
  - Maintain hay or forage intake at a minimum of 1 to 2% of body weight, feed grain first followed by roughage.
  - *Showfill* is great filler consisting of beet pulp, oats and soy hull pellets all coated in molasses. This product is high in fiber and extremely palatable, it can be mixed directly into the ration either soaked or dry.
- Growing/Finishing calves on full feed:
  - Transition from *ShowMaker Developer* to *ShowMaker Grower/Finisher* at about 650 to 700 pounds on moderate framed cattle. Cattle with tendencies to be larger framed may start out directly on *ShowMaker Finisher*.
  - Maintain grain intakes at a minimum of 2 to 3 % and forage at a minimum of 1% of the steer's body weight.
  - For hard to finish steers add 2-16 oz. Per day of *ShowMaker Bloom* depending on finishing requirements. Start slow and gradually increase. This 99 % dried fat product is highly palatable and great for increasing the fat in the diet.
  - Do not limit feeding before the steer has reached his desired amount of finish, it can lead too a harder to finish animal that may grow too a larger frame size.
  - Feed should be completely consumed before the next feeding, remove any feed not consumed in the feeding period and reduce the amount in proportion to the amount left over. Always feed at the same time daily to reduce the amount of stress to the steer. Cattle that do not consume all of their feed may need to be managed differently, possible feeding smaller amounts three times per day to maintain minimum intake levels.

### Feeding Guidelines for Heifers

- Developing heifers should be approached differently than steers. The desire is to help the heifer reach her full genetic potential in terms of frame size and muscle development without putting an excess body condition that can be detrimental to reproduction.
- Feed *ShowMaker Developer* at a rate of 1½ to 2% of her body weight until the heifer reaches maturity and then reduce to 1 to 1 ½% per day to maintain desired condition.
- Maintain higher forage intakes at a minimum of 2% of the heifer's body weight per day.
- *Showfill* is a great product to add to a heifers diet to maintain high fiber intake while maintaining her show look but not causing her to become over conditioned.
- *ShowMaker Developer* can be fed throughout the show life of your prospect heifer.

The information given is to be used as a **GUIDELINE**; the feeder and the animal will help determine the proper feeding program. Please not all animals are individual and will respond differently to the feeding program. Wishing success to all!

## Beef Management Tips



- Provide a clean and spacious pen upon arrival.
- Provide good quality forage along with your Showmaker Show feed.
- Make sure you have plenty of cool fresh water available at all times.
- Feed at a rate of 2-3% of the steer's body weight in grain in addition to the forage.
- A coffee can is a great tool to use for weighing feed, make sure you know how much the grain weighs in the can.
- Be sure to follow recommendations on worming show calves at least every sixty days.
- Follow recommended feeding program in terms of achieving the correct amount of body condition.
- Be sure to treat for any sign of sickness or fungus to prevent poor performance.
- Consult with the breeder and local veterinarian when any treatment is needed and make sure to observe all withdrawal periods on medications.
- Make sure to be consistent in your feeding patterns, feeding the same time each day will avoid overstressing the animal.
- Be sure to weigh your animal, so that you can monitor its weight gain.
- Be sure a moderate gain is achieved holding animals to early will result in improper conditioning in the end. Feeding animals for maintenance will achieve more frame growth and less finish.
- Work with your animals, get them halter broke when they are young.
- Rinsing and brushing your animal daily helps train the hair.
- Practice showing your steer at home, it will make it much easier at show time.

S h  w M a k e r

Associated Feed  
1-800- 540- 3333

---

---

# Show Cattle **EXPLOSION** 0-1147 Medicated

---

---

(contains Optaflexx brand of Ractopamine HCL)

## For Feedlot Beef Cattle

For increased rate of weight gain, improved feed efficiency and increased carcass leanness in cattle fed in confinement for slaughter during the last 28 to 42 days on feed.

- Whey
- Milk
- Barley
- 7.5% Fat
- Up to 0.5" more ribeye area \*

★Add to current ration

★One 25 lb. bag will feed one steer at 3/4 lb./day for 33 days

*\*Based upon a summary of the Elanco Animal health Optaflexx core data set*

---

**Active Drug Ingredient:** Ractopamine hydrochloride —1147 g/ton

### Guaranteed Analysis



Protein .....	min .....	14.0%
Fat .....	min .....	7.5%
Fiber .....	min .....	5.0%
Calcium (Ca) .....	min ..... 0.5% .....	max .... 1.0%
Phosphorus (P) .....	min .....	0.5%
Salt (NaCl) .....	min ..... 0.1% .....	max .... 0.6%
Potassium .....	min .....	0.7%
Vitamin A .....	min .....	5000 I.U./lb

### Feeding Directions:

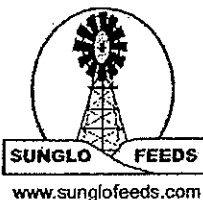
Each pound of Show Cattle Explosion contains 573 mg. of Ractopamine HCL. Mix into the complete diet and feed so that each animal receives 0.157-0.75 lbs/head/day of Show Cattle Explosion. This will supply 90-430 mg./head/day of Ractopamine HCL.

### Caution:

Not for use in animals intended for breeding.

### Limitations for use:

Feed continuously to cattle as sole ration for the last 28-42 days on feed.



Manufactured by  
**North American Nutrition Companies, Inc.**  
Lewisburg, OH 45338

Optaflexx™ is Elanco's trademark for Ractopamine hydrochloride. Elanco Animal Health, Indianapolis, Ind.

---

---

**associated***feed*



---

Jr. Livestock Camp



# Selection & Evaluation

1-800-540-FEED  
[www.associatedfeed.com](http://www.associatedfeed.com)

# You Be the Judge

## Beef Cattle Judging

Success in the cattle industry will most likely depend on the ability to make the right decision at the right time. Beef cattle judging is a good way to form this decision-making ability, and it enables you to see the strengths and weaknesses in breeding and market cattle.

Judging forces you to make choices based on sound reasons, and in time you will discover that judging will train your mind to use sound reasoning.

Cattle judging is an art and talent that can only be improved by practice and the desire to want to learn more. It teaches you to study beef cattle so you are familiar with the basic structure of each animal you place in a class. By looking



for both the strengths and weaknesses of individual animals, you form a habit of seeing these same characteristics when solving other problems. There is no substitute for a mind trained to see all sides of a problem.

Judging not only allows you to develop a good eye for cattle, but it also can give you the opportunity to visit some of the most outstanding livestock breeders in America. Livestock judging team competition culminates at the university level. Teams throughout the United States compete several times a year and many of the team members started out just where you are today; a young person interested in a life in the livestock industry.

### MECHANICS OF LIVESTOCK JUDGING

A judging contest will consist of 'classes' of livestock. Classes will contain four individually marked animals, and you will decide in what order to place them. When marking your judging card it is imperative that you mark it and make sure it is marked correctly to receive a score. Also, be sure your contestant number, class name and number is on every card. Without this information, you could receive zero points for the class.

When placing a class of livestock keep it simple. Recall what your coach has taught you and keep in mind the 'big picture.' For example, do not bottom a heifer because of one fault, if she is the nice balanced, sound structured and big bodied, but perhaps is not the most feminine. Chances are, she will not be placed last due her lack of femininity.

### STEPS IN JUDGING A CLASS OF LIVESTOCK

#### 1. Information

You must be totally informed as to the intended use of the animals you are to evaluate, and be aware of relative economic differences among the traits you observe. If performance information or a scenario is available, develop a clear understanding of it. For

example, you might have to compare the values of underfinished and overfinished steers, or structural correctness and growth in a class of bulls.

#### 2. Observation

You must carefully observe each animal and establish how it meets or fails to meet the requirements that have been established as ideal. Be sure to evaluate the animals from every angle and watch the animal travel.

#### 3. Comparison

Each animal must then be compared with all others in the group, establishing differences and similarities.

#### 4. Conclusion

After completion of the first three steps, you must arrive at a logical ranking for the animals as to the relative merit of their use.

### REASONS AND NOTE TAKING

A major part of a judging contest is being able to justify your placing with a set of oral reasons. Contestants recite their reasons to a judge explaining why they placed the class the way they did.

The ability to give oral reasons is one of the most valuable skills you will gain from judging. In order to be successful at reasons, they must be organized, accurate, and brief — usually about two minutes. Reasons must be

given with confidence and authority; remember you are confident in your placing and that needs to be expressed throughout your reasons.

It is important when giving reasons that you are able to recall each individual animal in your mind. You should be able to visually picture each animal standing and on the move, however it is important to take good notes to

help with the memory recall.

There are different ways to take notes and your coach will tell you which format to use. Keep in mind that you are taking just NOTES, you are not writing out your reasons. Your notes should be brief, giving you just enough information to enable you to picture the animals in your head.

**HERE ARE TWO NOTE FORMAT EXAMPLES:**

Angus Heifers	1-2-3-4
Compare 1/2	Grant 2 back to 1
	Criticize 2
Compare 2/3	Grant 3 back to 2
	Criticize 3
Compare 3/4	Grant 4 back to 3
	Criticize 4

Angus Heifers	1-2-3-4	
Compare 1/2	Grant 2 back to 1	Criticize 2
Compare 2/3	Grant 3 back to 2	Criticize 3
Compare 3/4	Grant 4 back to 3	Criticize 4

**EXAMPLE SET OF REASONS**

I placed the Angus heifers 1-2-3-4. In my top pair I preferred the more powerfully constructed 1 to hear 2. She is a bigger bodied heifer, being more expansive in her upper rib and she gets progressively deeper from her fore rib back. She not only spreads more natural width down her top and out of her hip, but she too is stouter framed, being wider chested and stepping down on a bigger foot. As a bonus, she tracks away with more stability to her hock.

There is no question, 2 is more feminine. She is more refined about her head and neater fronted being cleaner through her basket. She too appears to be more ideal in her body condition. Unfortunately, I left her second as she flattens to her upper rib and tracks in and close at her hocks as she moves away.

Even so, it is still her broodiness that places her over 3 to my intermediate pair. 2 is bigger ribbed, being deeper middled, allowing her to appear to be castor fleshing. Yes, 3 is cleaner fronted and flatter necked, but this does not compensate for the fact that she is light ribbed and shallow bodied, so she's third.

Still, I can use her advantage in balance to place her over 4 in my final pair. 3 is more refined and extended through her front. She is stronger topped and squarer from hocks to pins. She too is flatter in the set to her hocks. Perhaps, 4 is more expansive in her rib and stands on a more massive foot, but in reality, she is deep chested, off in her hip and is poor structured being sickle hocked, so she's last.

## FIGURING YOUR SCORE

Determining your score on a class can be confusing at first, but gets easier with experience. Each class has a maximum of 50 points. Cuts are used to figure scores and are assigned to the pairs in the class, according to the degree of difficulty the officials see in making those decisions.

If the official is 1-2-3-4, with cuts of 3-6-4, and you placed the class 2-1-3-4, for switching the top pair you would lose 3 points, resulting in a score of 47.

Correct Placing	If not, deduct	In our example
1 over 2	3	0
1 over 3	3+6	0
1 over 4	3+6+4	0
2 over 3	6	0
2 over 4	6+4	10
3 over 4	4	4
		<hr/> Total drop: 14
		Final Score 50-14 = 36

The other cut points are applied accordingly to their respective pairs.

That was just an example of a pair switch, let's look at what would happen if you placed the class 1-4-2-3. This placing would be referred to as a bust.

To figure your score, realize that in every class of 4 animals there are six decisions you must make correctly to score 50 points. In this case, the decisions are:

---

---

## JUDGING MARKET STEERS

One or more classes of market animals will be included in most contests you compete in as a livestock judge. The most important criteria to consider in a market steer class is muscling, finish (fat), balance, structure, rib shape and depth.

Muscle expression should be evaluated down the steer's topline and through his quarter. External fat should be evenly distributed over all areas of the ribcage. The ideal fat thickness should measure between .3 inches and .5 inches at the 12<sup>th</sup> rib. Other indicators of fat would include the brisket, middle, cod and pin bone areas.

Balance is best evaluated from a side profile by drawing an imaginary line through the center of the steer. The front half of the steer should be equal to the back half. A nicely balanced steer will be straight in its lines, clean about its neck and middle.

A steer should also be structurally sound. If the steer cannot walk then he will not be able to get to the feed bunk to eat and gain weight. Also, if the steer is shallow bodied and flat ribbed, his fleshing ability will be poor.

## JUDGING BREEDING CATTLE

Several classes of breeding cattle are included in judging contests. It is important to know how to evaluate them not only for a contest, but also for your personal herd.

Breeding cattle should be evaluated on structure, fleshing ability and muscling. Additionally, females need to be evaluated on femininity and bulls' scrotal size and placement needs to be analyzed.

Structure is a top priority. Bulls and females need to be structurally sound for a natural breeding situation. A bull's hind legs need to be sound for mounting. Females

need to be structurally sound in order to prevent calving complications and enable them to raise a healthy calf.

Breeding cattle also need to be easy fleshing and big bodied. They need to have upper rib shape, be deep bodied and loose flanked. Also, they should be wide based.

Muscling is an important aspect, as well. It is evaluated the same as it is in steers, down the topline and through the quarter.

Females should be feminine about their head, neck and through their front end. Bulls need to have a large scrotum that is correct in it's set. Finally, all breeding cattle need to be well-balanced on the profile.

## JUDGING PERFORMANCE CATTLE

Most contests will have one or two classes that use performance records as part of the placing. This may include a scenario of the intended use of the animals, and actual or projected data (EPDs). Performance classes are more objective, and often times more difficult to judge than classes that require only visual appraisal. However, they are more representative of the real-life choices that you will face as a livestock producer. Each performance class will have a management situation.

Here are a few things to keep in mind when judging a performance class:

1. The type and amount of feed resources available. An example would be in a limited feed situation, the producer would want easy fleshing cattle that require less feed.
2. When judging bulls, the size, age and breed of the cows the bulls will be used on is important. An example is that low birth weight bulls should be used on heifers, since heifers are more apt to have

difficulty when calving for the first time.

3. Labor availability or management capabilities is important. For example, if labor is low, then calving ease should be considered.
4. The method and time in which the progeny will be utilized or marketed. If all calves are sold at weaning, then the bull's own weaning weight and weaning weight EPD is important. The higher the number the better, because that would mean the bull was a fast gainer and therefore his calves would weigh more at selling and result in greater

profits. However, if calves are retained and fed until they are finished, then yearling weight, average daily gain and carcass traits become important.

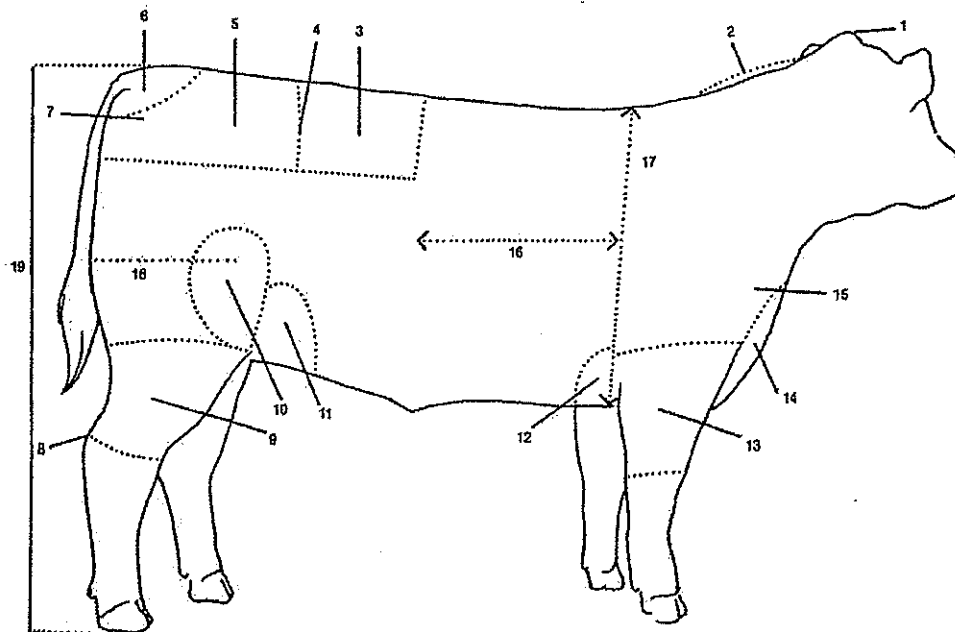
When judging the class you should:

1. Understand the class description, situation or scenario
2. Set priorities according to the class description
3. Evaluate visual traits
4. Evaluate the performance records
5. Decide on the final placing

### Values of Livestock Judging

- Trains the students to evaluate traits of economic importance and consequently make more logical decisions on genetic selection.
- Educates students to accurately describe and compare animals with proper and accepted livestock terminology.
- Requires students to establish and defend their conclusions.
- Provides a form of competition that stimulates interest in the livestock industry.
- Rewards students for study and preparation.
- Builds personal confidence.
- Improves the power of observation and develops memory.
- Teaches students how to present themselves and their ideas.
- Teaches students to be persuasive and convincing.
- Builds interest in production, trends and opportunities in the livestock industry.

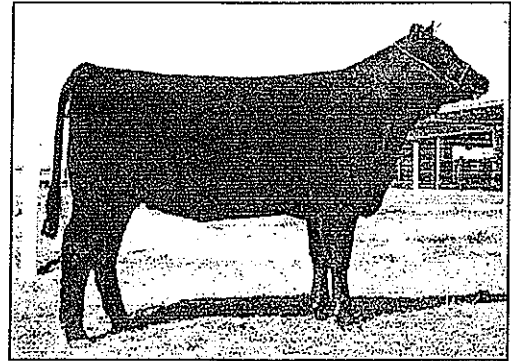
## Parts of Cattle



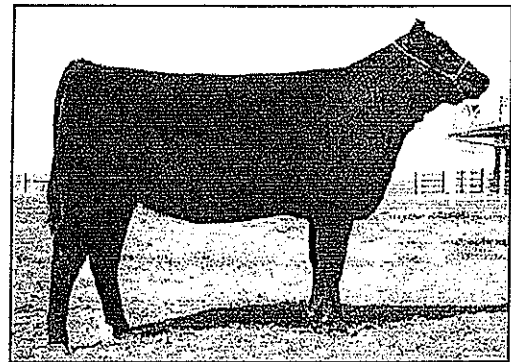
- |                    |               |                                  |
|--------------------|---------------|----------------------------------|
| 1 Poll             | 8 Hock        | 15 Point of Shoulder             |
| 2 Crest            | 9 Hind Shank  | 16 Ribs                          |
| 3 Loin             | 10 Stifle     | 17 Heart Girth or Depth of Chest |
| 4 Hook or Hip Bone | 11 Rear Flank | 18 Length of Rump                |
| 5 Rump             | 12 Fore Flank | 19 Height at Hip                 |
| 6 Tail Head        | 13 Fore Shank |                                  |
| 7 Pin Bone         | 14 Brisket    |                                  |

# Class of Angus Heifers

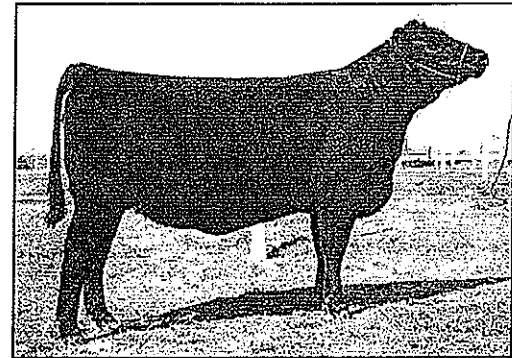
1



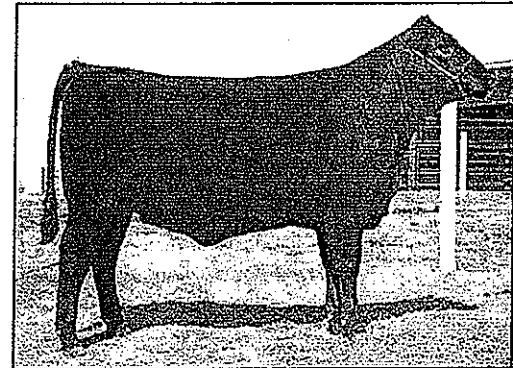
2



3



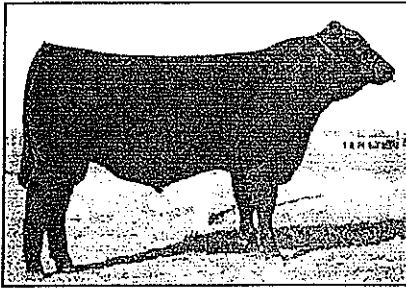
4



As you analyze these four heifers, you should be able to divide the class into two logical pairs. Heifers 3 and 4 are bigger bodied and wider constituted than 1 and 2. 3 appears to be sounder structured, standing squarer up front and from the rear. 4 is more feminine through her front and appears to be more ideal in her body condition. In the beefers pair, 2 is wider chested and has more rib shape. She too appears to be more correct in the set to her hock. 1 does stand square on her front legs, but she has the least rib shape. The official placing for this class is 3-4, 2-5.

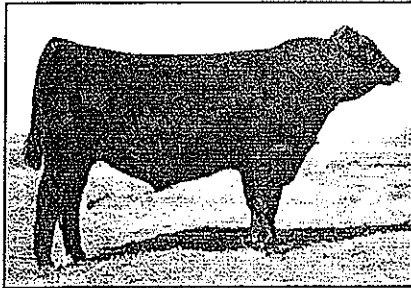
# Class of Performance Angus Bulls

1



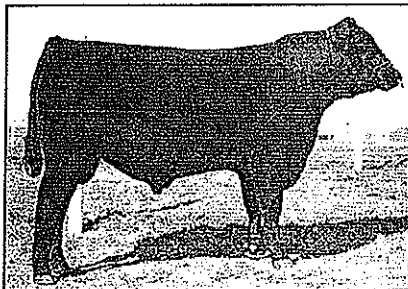
Birth Weight		Weaning Weight		Maternal Milk		Comb	Yearling Weight	
EPD	ACC	EPD	ACC	EPD	ACC	Value	EPD	ACC
+2.8	.37	+36	.35	+10	.32	+26	+67	.31

2



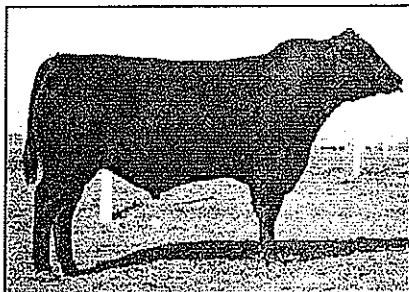
Birth Weight		Weaning Weight		Maternal Milk		Comb	Yearling Weight	
EPD	ACC	EPD	ACC	EPD	ACC	Value	EPD	ACC
+3.1	.41	+40	.37	+16	.37	+36	+77	.31

3



Birth Weight		Weaning Weight		Maternal Milk		Comb	Yearling Weight	
EPD	ACC	EPD	ACC	EPD	ACC	Value	EPD	ACC
-0.2	.42	+28	.41	+15	.22	+29	+59	.26

4



Birth Weight		Weaning Weight		Maternal Milk		Comb	Yearling Weight	
EPD	ACC	EPD	ACC	EPD	ACC	Value	EPD	ACC
+6.9	.38	+34	.34	+4	.28	+21	+64	.32

Scenario: Select these bulls as they are to be mated to heifers and mature cows in a purebred operation. This operation profits primarily through the sale of yearling bulls to commercial producers. Each year they retain the top 50% of heifers as replacements. Feed and labor resources are average.

As you analyze these four bulls phenotypically, you should be able to divide the class into two logical pairs. Bulls 1 and 2 are nice balanced and heavier muscled. Bull 3 is nice balanced but he is right framed and coarse framed. Bull 4 does appear to have some muscle, but is steep out of his hip and straight legged. Now in the top pair, bull 2's data suggests he could produce commercial bulls who would have more growth than bull 1 and his daughters should be heavier milkers than bull 1. In the bottom pair, 3 is definitely a better sire to be bred to heifers due to his lower birth weight. Bull 3's daughters also should be heavier milkers. Bull 4 as you can see has high birth weight and low in his milk. With all this in mind the official placing on this class is 2-1-3-4 with a class of 2-1-3-4.



## Breeding Cattle Selection

We can make cattle selection very difficult, or we can stick to some basics when selecting a breeding project. Here are some sound selection principles to adhere to when looking for replacement heifers:

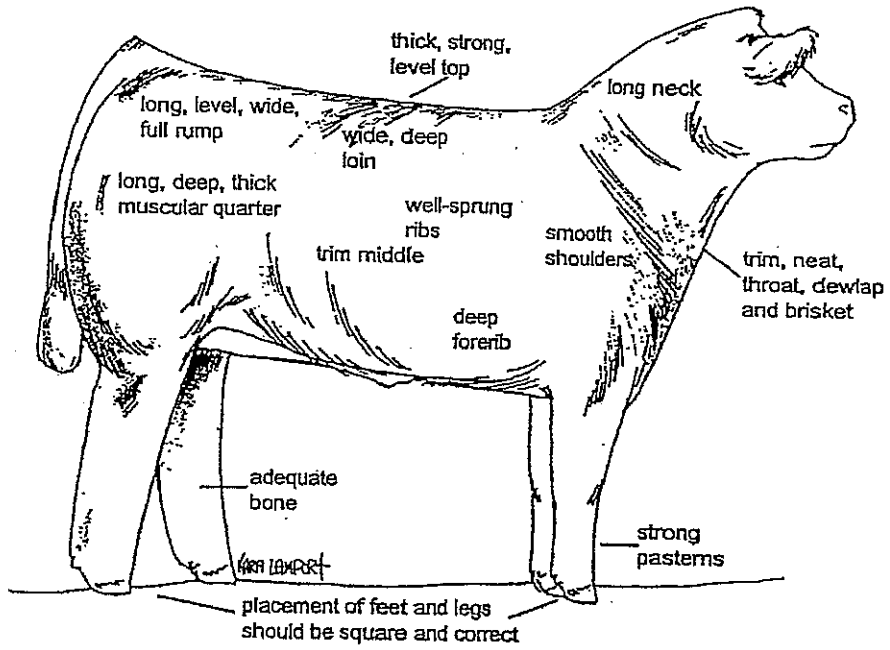
First we have to remember that a breeding project is a long term investment requiring an understanding of proper nutrition, health, as well as genetics and reproduction (not always a focus in a market project). We also must make sure we have the proper facilities in which to house breeding animals for a long period of time (summer feed, winter feed, enough room if we want to build numbers in the project).

Once we decide that we can accommodate a breeding project let's look at some important characteristics or traits to be aware of when selecting breeding cattle.

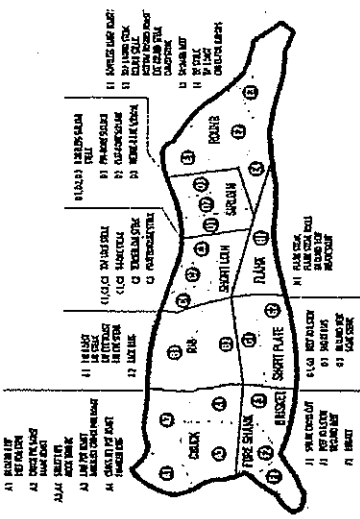
- **Structural Correctness**
  - Sound feet and legs
  - Levelness of topline and from hooks to pins
  - Proper angle to shoulder and pasterns
- **Fleshing Ability**
  - Proper rib shape
  - Volume and capacity
  - The ability to maintain body condition under variable feed environments
- **Muscularity**
  - Adequate muscle depending on breed type
  - Correct muscle shape
  - The ability to have enough muscle and "handle it well"
- **Femininity**
  - Female in look without compromising volume and muscularity
  - Balance and attractiveness
  - Don't sacrifice "broodiness" and function for femininity
- **Performance Data**
  - Understand how to utilize EPD's as a selection tool
  - Know the genetic background of the animal
  - Balance traits of economic importance (repro, growth, carcass)
- **Evaluate the sire and dam of the animal**
  - Good estimate of what the animal will look like visually
  - Performance records are also important when evaluating parental stock
  - Select heifers from cows that excel in convenience traits like calving ease, udder quality, fleshing ability, and disposition.

Ideal Market Steer

Figure 7



# ANGUS BEEF CHART



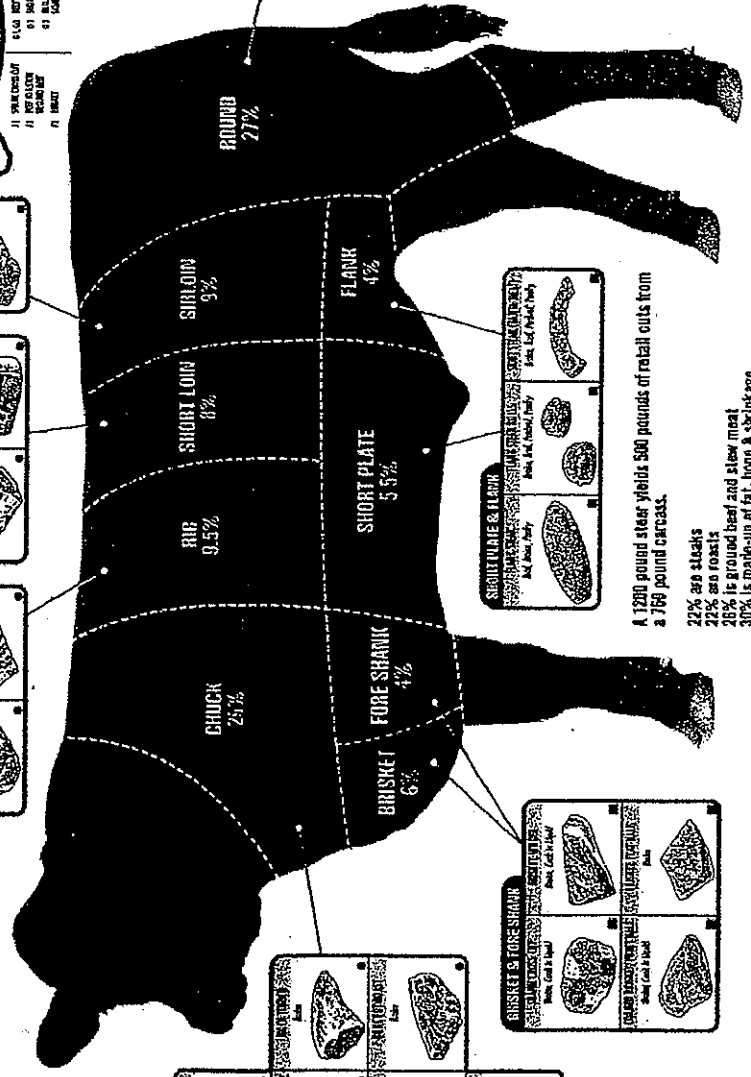
**SHORT LOIN**  
 1. RIB ROAST  
 2. RIB ROAST  
 3. RIB ROAST  
 4. RIB ROAST  
 5. RIB ROAST  
 6. RIB ROAST  
 7. RIB ROAST  
 8. RIB ROAST  
 9. RIB ROAST  
 10. RIB ROAST

**SHORT LOIN**  
 1. RIB ROAST  
 2. RIB ROAST  
 3. RIB ROAST  
 4. RIB ROAST  
 5. RIB ROAST  
 6. RIB ROAST  
 7. RIB ROAST  
 8. RIB ROAST  
 9. RIB ROAST  
 10. RIB ROAST

**SHORT LOIN**  
 1. RIB ROAST  
 2. RIB ROAST  
 3. RIB ROAST  
 4. RIB ROAST  
 5. RIB ROAST  
 6. RIB ROAST  
 7. RIB ROAST  
 8. RIB ROAST  
 9. RIB ROAST  
 10. RIB ROAST

**SHORT LOIN**  
 1. RIB ROAST  
 2. RIB ROAST  
 3. RIB ROAST  
 4. RIB ROAST  
 5. RIB ROAST  
 6. RIB ROAST  
 7. RIB ROAST  
 8. RIB ROAST  
 9. RIB ROAST  
 10. RIB ROAST

**CHUCK CUTS**  
 1. CHUCK CUTS  
 2. CHUCK CUTS  
 3. CHUCK CUTS  
 4. CHUCK CUTS  
 5. CHUCK CUTS  
 6. CHUCK CUTS  
 7. CHUCK CUTS  
 8. CHUCK CUTS  
 9. CHUCK CUTS  
 10. CHUCK CUTS



**ROUND**  
 1. ROUND  
 2. ROUND  
 3. ROUND  
 4. ROUND  
 5. ROUND  
 6. ROUND  
 7. ROUND  
 8. ROUND  
 9. ROUND  
 10. ROUND

**SHORT PLATE & FLANK**  
 1. SHORT PLATE & FLANK  
 2. SHORT PLATE & FLANK  
 3. SHORT PLATE & FLANK  
 4. SHORT PLATE & FLANK  
 5. SHORT PLATE & FLANK  
 6. SHORT PLATE & FLANK  
 7. SHORT PLATE & FLANK  
 8. SHORT PLATE & FLANK  
 9. SHORT PLATE & FLANK  
 10. SHORT PLATE & FLANK

**BRISKET & FORE SHANK**  
 1. BRISKET & FORE SHANK  
 2. BRISKET & FORE SHANK  
 3. BRISKET & FORE SHANK  
 4. BRISKET & FORE SHANK  
 5. BRISKET & FORE SHANK  
 6. BRISKET & FORE SHANK  
 7. BRISKET & FORE SHANK  
 8. BRISKET & FORE SHANK  
 9. BRISKET & FORE SHANK  
 10. BRISKET & FORE SHANK

**VARIETY MEATS**  
 1. VARIETY MEATS  
 2. VARIETY MEATS  
 3. VARIETY MEATS  
 4. VARIETY MEATS  
 5. VARIETY MEATS  
 6. VARIETY MEATS  
 7. VARIETY MEATS  
 8. VARIETY MEATS  
 9. VARIETY MEATS  
 10. VARIETY MEATS

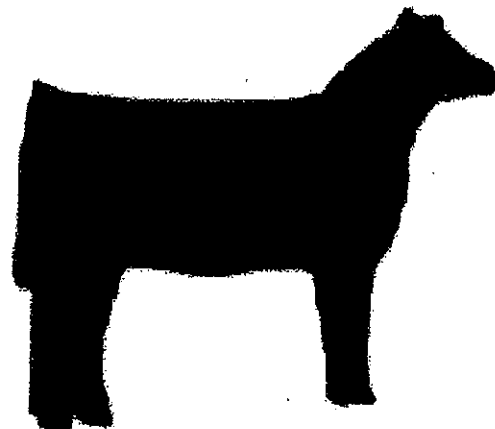
  
 American Angus Association  
 1201 North 1st St., Suite 200, Denver, CO 80202  
 303-733-9100 • www.angus.org

A 1200 pound steer yields 500 pounds of retail cuts from a 150 pound carcass.  
 22% are steaks  
 22% are roasts  
 26% is ground beef and stew meat  
 30% is made-up of fat, bone & shrinkage

Source: National Cattlemen's Beef Association

# Beef Facts

- Average Live Wt. = 1200-1250
- Average Dressing Percentage = 63%
- Average Back Fat Thickness = .35-.45
- Average Rib Eye Area = 12.5 ( for 1200 # live steer)
- Average Kidney Pelvic Heart Fat = 1.5- 2%
- Quality Grade- Maturity and Marbling "The eating experience"
  - Prime, plus, average, minus
  - Choice, plus, average, minus
  - Select, plus minus
  - Standard
  - Utility
- Yield Grade- Percent of boneless closely trimmed retail cuts (BCTRC) from round, loin, rib and chuck
  - Yield Grade 1 = 54.6% BCTRC
  - Yield Grade 2 = 52.3% BCTRC
  - Yield Grade 3 = 50% BCTRC
  - Yield Grade 4 = 47.7% BCTRC
  - Yield Grade 5 = 45.4% BCTRC
- Marbling Scores:
  - Abundant
  - Moderately Abundant
  - Slightly Abundant
  - Moderate
  - Modest
  - Small
  - Slight
  - Traces
  - Practically Devoid
  - Devoid



**associated**<sub>feed</sub>



---

Jr. Livestock Camp



# Fitting

1-800-540-FEED  
[www.associatedfeed.com](http://www.associatedfeed.com)

# Showing & Fitting

## Keys to Success

**Y**ou probably do not have to travel far to show your heifer at a county fair or area livestock show. Most state Angus associations have a junior Angus show each year, too. Contact the junior advisor in your state for information on state Angus shows. The American Angus Association also sponsors several regional previews and regional shows in the summer as well as the National Junior Angus Show. It is important that you know the ownership and entry deadlines in order to participate in some state and regional shows. These deadlines and other show information are on the Internet at [www.njaa.info](http://www.njaa.info).

### START WHEN YOUR CALF IS YOUNG

If you plan to exhibit your calf you will need to halter break and train it to lead. The best time to halter break is at weaning, when it is small enough to be easily handled. This is safer and less stressful for you and your calf. Some calves take longer to break and some never break to lead. Genetics play an important role in the calf's attitude and its willingness to be trained.

There are several philosophies of how to halter break an animal.

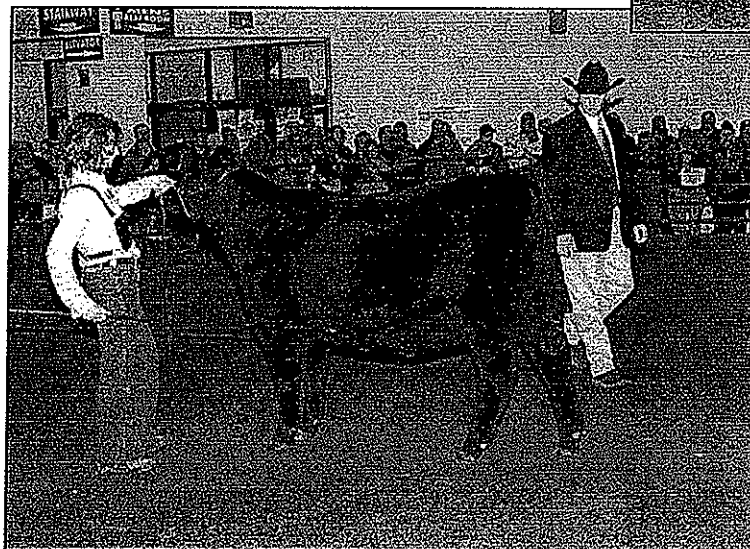
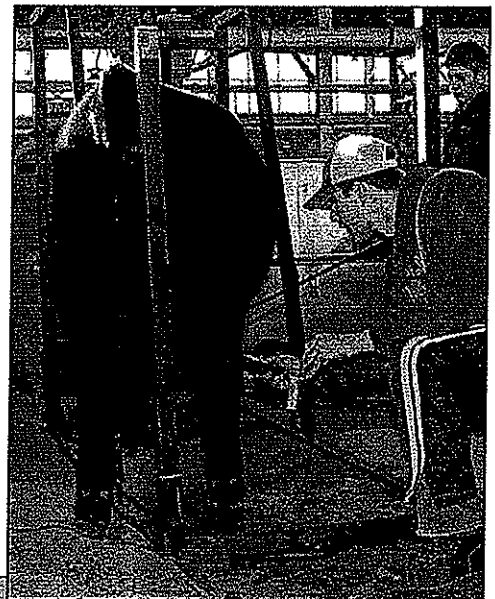
Find a strategy that will work best with your resources and time. The goal should be to minimize stress for all concerned — the calf, equipment and you.

To get started you will need a rope halter, preferably nylon and 1/2 to 5/8-inch (in.) in

diameter; a confined area or chute where you can corner the animal; and a sturdy place to tie the calf.

Try to arrange your gates so you will have a small pen where you can halter your calf. If possible, run several calves together in a small, almost crowded pen. Enter the pen slowly and start scratching the calves on the back, not on the head. At first they will try to get away from you, but they cannot in a small pen. Soon they will stand quietly while you scratch them.

Some herdsmen halter the calf and let it drag the halter for a few days prior to tying it up. This lets the



calf get used to the pressure when it steps on the rope repeatedly. Others immediately tie the calf and remove the halter each night. They say this reduces the calf's stress and frustration.

In either situation, the first time you tie the calf, tie it close to the pole or board, not allowing much slack in the rope (about 12 in.). Also, do not tie the calf with its head up,

allow the calf to hold it in a natural position the first few times it's tied.

Leave the calf tied for a short duration. It is important to keep checking the calf every 15-20 minutes to make sure it does not get in a position to hurt itself.

Begin talking to and touching the calf as soon as possible. Combing and brushing helps calm the calf. The more time you can spend with the calf, the sooner you will develop a relationship and trust.

Playing a radio also can help calm the calf and get it used to different noises.



When releasing the calf, do it calmly without jerking on the halter. If the calf starts to pull and get away try to keep your hold. Once a calf gets away, it thinks it can do it again.

After three days or when the calf does not pull on the halter as much, start tying the calf with its head up so it gets used to standing with its head up and its feet underneath it. On the fourth day try to lead the calf, and if possible, try taking it to the wash rack.

When teaching the calf to lead, voice reward is very important. Accept a few steps as an accomplishment. You must be patient and calm.

Once calves are accustomed to the halter, begin leading them. Remember to be patient—training takes time. It also is important that the calves do not learn they can get away from you. Once they are broke to lead, practice stopping and turning the calves so they behave and maneuver the way you want.

It is important to practice with a show stick before going to a show. Scratching with the show stick should calm the calf when it is introduced to new environments.

Using a show stick, teach your calf to stand correctly. His or her feet should be positioned squarely. Once the feet are set, use the show stick to calmly scratch the calf's underline or chest. This keeps the topline up and helps calm your calf. Prac-

tice at home. It takes time for an animal to accept the stick touching its belly and feet.

Use a leather show halter a few times at home so that the calf gets used to the chain under its chin. For a proper fit, the nose piece should be up on the nose about halfway between the nose and eyes. A black leather show halter that has been oiled is preferred.

Remember, showmanship and grooming must be practiced at home in order for them to be effective in the show ring.

## FITTING

There is nothing more satisfying to a 4-H, FFA or NJAA member than presenting a well-fit calf. Even more gratifying is the feeling they have when they know they have done the fitting themselves.

The difference between grading an A for fitting and a C could be the effort at home. As you stand around the show ring at any event, you can tell which junior members have done their homework before going to the show.

The object to fitting is getting the cattle to look the best they possibly can, while still presenting them naturally. To achieve this goal takes a lot of time and effort. Caring for and exhibiting a show animal is a big responsibility, but it is a rewarding experience.

Teaching someone how to fit and clip is hard. Beginners should watch an experienced fitter, then practice doing it themselves.

No two fitters clip or fit cattle exactly the same. Each one has his or her own style and ideas. Not all animals are alike, and each requires different fitting techniques.

## HAIR CARE

Nutrition plays an important role in the growth and hair condition of a show animal. Each calf's individual requirements may vary. Consult your local nutritionist to develop a ration that fits your resources and your calf's genetics. Some ingredients to consider are:

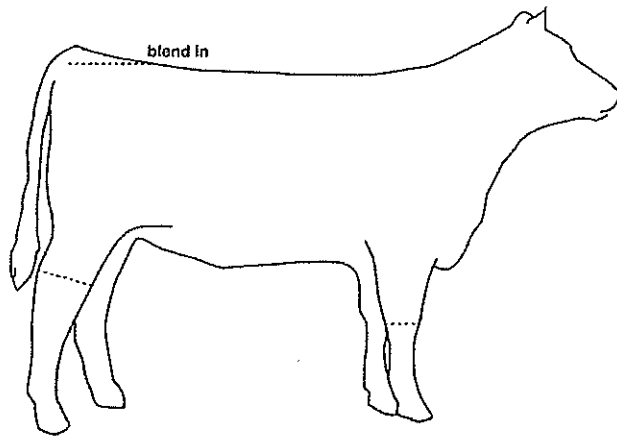
1. Protein (i.e. a ration with 12-14% protein — a 60:40 oats:corn ration)
2. Minerals and salt block
3. Vitamin A
4. Routine worming
5. Beet pulp or cottonseed hulls to act as a filler, expanding the animal's stomach. Cottonseed also helps keep oil in hair.

Just like a calf's nutrition requirements and attitude, a calf's hair coat is related to its genetics. The best way to stimulate hair growth is brushing, especially in the hot summer months.

Body clipping or shearing prior to the show season promotes fresh hair growth (Illustration A).

### ILLUSTRATION A

#### Pre-show-season shearing



Many junior exhibitors who want their animals to look their best at the National Junior Angus Show in July shear off their animals in March (90-120 days prior to show season). If using a pair of sheep head clippers (#7H2 blades), shear up on the calf's body and down on the lower quarter and legs. If using regular flat head clippers (#4AU blades), clip down on the entire animal. Leave some hair on the poll, tailhead and lower hind legs.

During the summer, bedding the animal in a dark place during the day shortens the day length and promotes hair growth. Keeping the calves under fans and/or misters will help cool and circulate the air.

Keeping the animal clean and washing once a week will help promote new hair growth. Rinsing the calf daily with a conditioning product promotes new hair growth and helps train the hair.

If an animal's hair is dry, spray the calf with an oil, blowing it in with a blower before washing.

External parasite and ringworm control also are important to keeping the animal and its hair coat healthy. Ivomec® is the most common product used to reduce parasites.

Watch carefully for the onset of ringworm. It begins as a round, scaly spot that will show hair loss. It spreads rapidly on the body, to other cattle and to people. If ringworm occurs, consult your veterinarian for treatment.

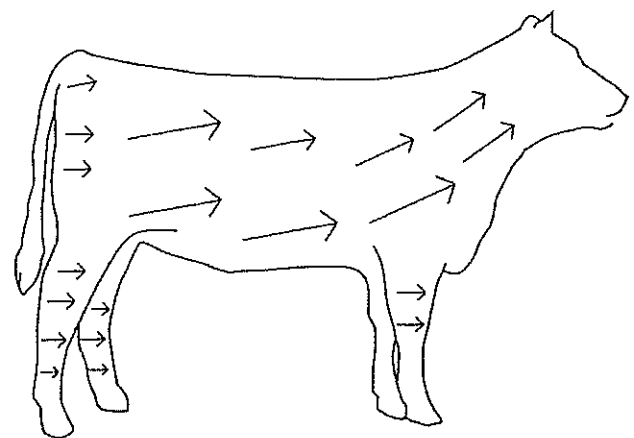
### WASHING

When washing, use a mild dishwashing soap. Be sure to rinse thoroughly to prevent dry skin and hair.

After washing you need to replace the natural oils using a conditioner. You should dip the tail in the conditioner and pour the remainder over the animal's back. In the summer, you can add fly repellent to the dip to control flies.

### ILLUSTRATION B

#### Brushing and combing pattern



Brushing is the key to a well-trained hair coat. While at home and at a show, brushing and combing will promote hair growth. After rinsing or washing an animal, brushing and then blowing the animal dry will help set the calf's hair in the desired angle. While at a show, blowing out the calf and brushing it each time it gets up helps keep the calf clean and presentable.

#### After washing/rinsing

1. Remove excess water with the backside of the comb, taking in a downward motion.
2. Brush all of the hair downward, removing curls.
3. Brush the hair forward toward the front shoulder and neck.
4. For animals with more hair, brush at a 45-degree angle, as pictured, and work toward desired angle. The outside and inside of the front and back legs should be brushed straight forward.
5. Using a blower (moving from top to bottom, front to back) helps train the hair. Rest the tip of the nozzle next to the skin and move slowly in an arc pattern for best results. Be sure not to create lines in the animal when using the blower.

After rinsing, brush and blow the animal dry (Illustration B). Before the animal is completely dry, mist with a sheentype spray to help set the hair, then finish drying.

### CLIPPING

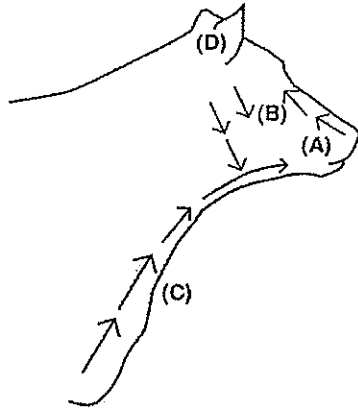
Clipping is one of the most rewarding parts of the entire fitting process, because you can actually see the changes you make to an animal.

The key to a successful clip job is knowing an animal's faults and weaknesses and being able to compliment these faults. Before starting to clip, evaluate the animal carefully and trim off the hair accordingly. It's important to realize not all animals are clipped alike.

## ILLUSTRATION C

### Clipping the head

Always clip against the natural direction of the hair with the 84AU blades to achieve a close, smooth job. Approximately three weeks before the show, shear the neck, brisket and head. A few days before you leave for the show, reclip the animal's face. Try not to make lines too distinct; keep it neat and natural.



- A. Clip up on the nose and forehead.
- B. Clip down on the cheek to reduce lines. Blend carefully.
- C. Clip up on the brisket and blend carefully. This promotes a longer extension of the neck.
- D. Hair is thinned on the ear.

Mistakes and gaps will happen and serve as a good learning tool. The easiest way to learn is to pick up a pair of clippers and start practicing.

Before clipping be sure your animal is clean and restrain it in a blocking chute for its safety and yours.

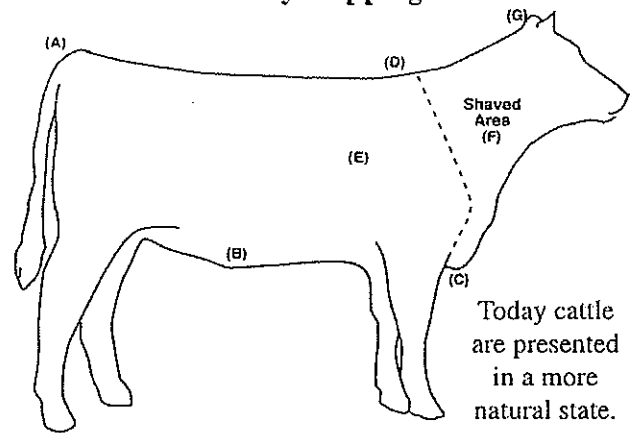
Clippers need to be in good order and working properly. Be sure to oil and lube before starting. When purchasing clippers, there are several brand names to consider: Oster, Lister, Wahl, Heiniger, Andis, and Premier just to name a few. You will need:

1. A regular pair of flat heads. Use standard, flat 84AU blades or the plucking blade for shaving areas where you wish to leave more hair.
2. A pair of sheep heads. Beginners should use a C-type head with the 20-tooth goat comb blade (P7112 blade).
3. A pair of inexpensive, small, adjustable clippers (Andis). These are less noisy and are used for the final touches.

Approximately three weeks before a show, clip the head, brisket and neck (Illustrations C & D). Clipping usually takes at least two sessions — before leaving for the show and at the show. Most of the clipping is usually done at home with the last-minute touches at the show. The hair is usually trimmed in an upward and forward motion. Body clipping or blocking out the animal can take 45 minutes or more, depending on the amount of hair and the clipper's experience level.

## ILLUSTRATION D

### Body Clipping



Today cattle are presented in a more natural state.

**Tail and tailhead (A)** — The tailhead area is used to enhance the visual effect of a level hip. It can add body length and thickness by the way it is clipped. Today most fitters clip the hair above the grow bone tight (see also Illustration E).

**Belly (B)** — Using the sheep heads, trim the long hairs on the belly to give it a clean appearance.

**Brisket (C)** — Shave the brisket up with flat head clippers when shearing the head. Try not to make a distinct line. Blend in with neck hair.

**Point of shoulder (D)** — Use this as a guide point when shaving the front end (three weeks prior to show). Hair should be trimmed very short in this area to reduce prominence. Under the shoulder point — This hair and some neck hair is left long and used to blend in a prominent shoulder.

**Behind the shoulder (E)** — The hair is left as long as possible in this area to ensure proper blending of the shoulder joint.

**Neck (F)** — Three weeks before the show many Angus fitters clip out the neck on females from the point of the shoulder forward. Using sheep heads (P7112 blades) go up on with the flat heads (84AU blades) clip down. This makes the females appear more feminine. Top of shoulder joining neck — Hair should be utilized in this area to give the appearance of a smooth joining of these two parts.

**Poll (G)** — Leave this hair on the head to give added head length and youthfulness.

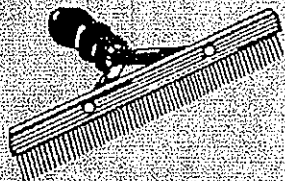
**Ear** — Trim the hair on the ear.

## HOOF TRIMMING

Proper hoof trimming can help the animal move more freely. Trimming should be done by someone with experience. Permanent injury or movement disorders can be caused by inexperience.

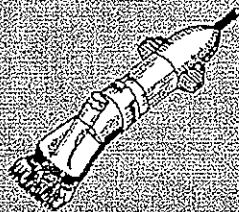
### EVERYDAY SUPPLIES

- wire tool or tree rooting brush
- soil brush
- plastic brush
- Scotch comb
- sprayers
- Show Shear oil
- blower
- kneed pans
- water breaker
- extension cords
- broom, pitch fork, gloves
- pliers, hammer and other tools
- neck rope
- extra trailer
- blocking chute
- far



### WASHING SUPPLIES

- soap (Dove, Ivory, Ivory cream)
- vinegar
- hair conditioner
- scrub brush
- hose
- nozzle
- wash bucket
- dip bucket
- fly repellent



### CLIPPERS

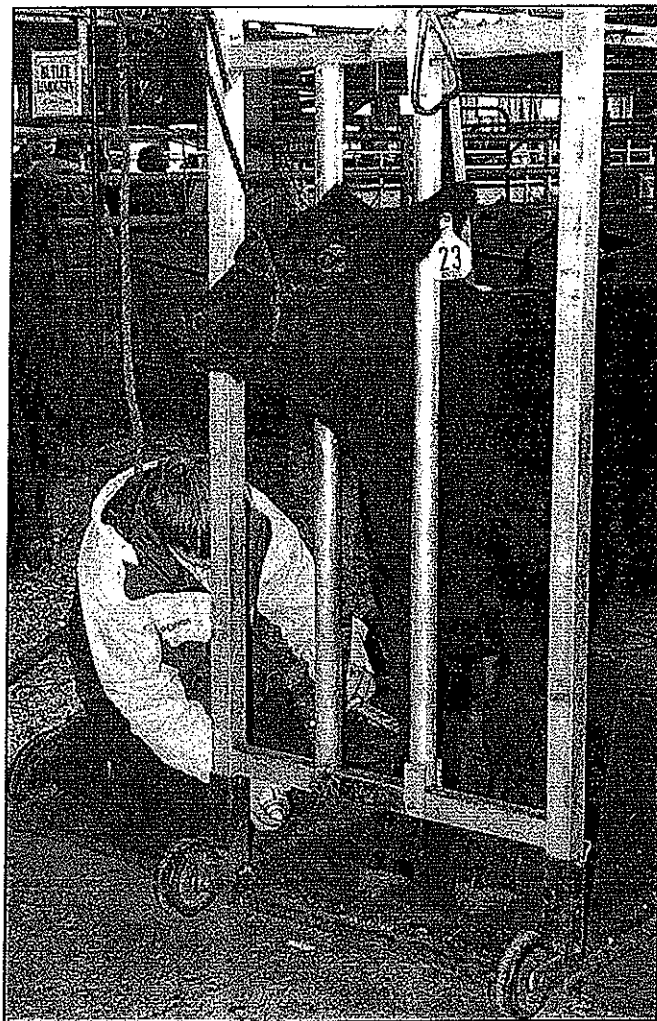
- flat heads
- Andis or small two speed clippers
- sheep heads
- blades
- clipper lube and oil

### SHOW DAY SUPPLIES

- Scotch comb
- clippers
- adhesive (Body Adhesive, EZ Comb, Futac Time or Formula)
- tail comb, glue and ties (if needed)
- show oil (Final Touch, Final Bloom, Final Mist)
- show foam
- scissors
- show product remover (Bleach, Pears, Ultra-purple oil)

### RING-SIDE SUPPLIES

- show halter
- clean Scotch comb
- show stick
- show harness
- nose lead (or bill)



A calf's hooves should be trimmed on a regular basis, every 30-60 days. If trimming prior to a show, give the animal at least a month to heal.

### AT THE SHOW

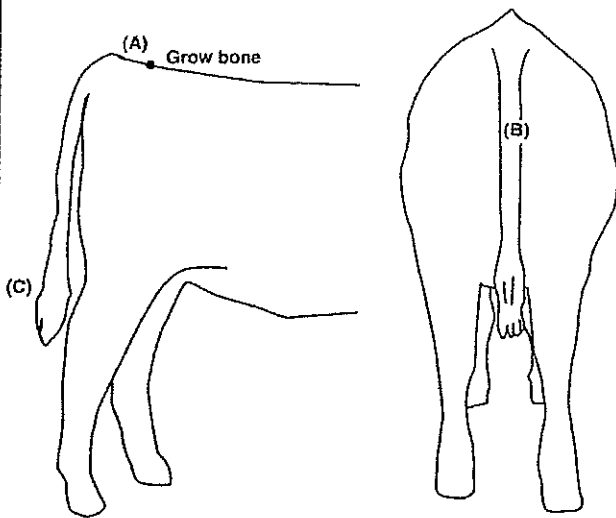
When traveling to a show, it is important to keep the calf eating and healthy. If traveling a long distance to a show, some fitters suggest not feeding the morning you leave. After arriving at the show that evening, feed a half feeding.

In many cases, the longer you are at a show the more accustomed the calf becomes to its surroundings. While at the show, it is important to keep the calf clean and as comfortable as possible. If possible, every time the calf gets up blow it out and brush the hair.

The night before the show you may want to only allow the calf to drink half of its normal water intake. Restricting water will hopefully make the calf drink more on show day, thus creating more of a fill for a deeper-bodied, more voluminous appearance.

### ILLUSTRATION E

#### Clipping the tail and tailhead



- A. Extend the hair at the tailhead so it has the appearance of a corner, making the animal look longer-hipped. The tailhead hair may be held up with glue and then trimmed to the desired shape.
- B. The hair down the middle of the tail is clipped into a short 'V'. This gives the appearance of more width between the pins.
- C. Today the tail is bobbed or trimmed for a natural look.

### SHOW-DAY PREPARATION

Prior to fitting on show day, the animal should be rinsed, dried, fed and given time to rest. If the show starts at 8 a.m., try to have the calf washed, dried and fed by 6:30 a.m. Some fitters wait to water prior to showing, but you may choose to water after feeding so as not to break the established routine. If the show starts late or runs long, you can refeed a half feeding at noon. A proper fill is important the day of the show. Beet pulp, cottonseed hulls, water and alfalfa are all stomach fillers.

Allow plenty of time to fit, about 30-45 minutes per animal. There are several show product companies that offer products for different hair types. For more information about products, contact your local supply dealer.

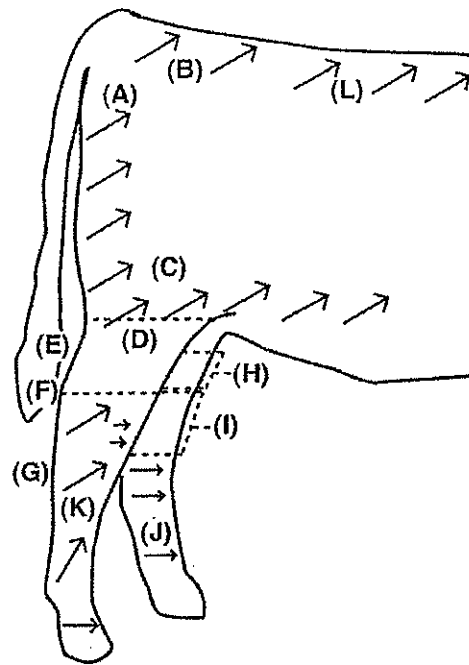
#### Here are some fitting tips:

##### A. Body hair

1. Apply show foam over the entire body (except the legs). Brush it in and blow it dry. The foam holds the hair and brings up the under coat.
2. Another option is misting the calf with a show product such as Base Coat, Zoom Bloom, or Show Sheen to set the hair. When using those

### ILLUSTRATION F

#### Hindquarter clipping (side view)



- A. Hair should be brushed out and around the hind quarter to add dimension when viewing the animal from the rear.
- B. Hair in this area is used to fill in the hip to give a level appearance from the hooks to pins.
- C. Hair is pulled up and out and held in place to add the appearance of musculature.
- D. Hair is left longer to add width to the lower quarter.
- E. Hair is left in this area above the hock to reduce hock prominence.
- F. The ball of the hock is shaved to the skin in about a 3-inch long area to reduce hock prominence.
- G. Long hairs are trimmed after boning the leg (pulling the hair up and out) to give the appearance of a more structurally correct, heaven-boned leg.
- H. Trim this area beginning right above the hock area to straighten the appearance of the leg.
- I. Trim the long hair here to fill the hock joint area and to straighten the appearance of the leg.
- J. Trim this area and around the entire leg to give a straight, symmetrical appearance.
- K. The hair on the inside and the outside of the cannon bone is pulled slightly forward to help add hair length to the front of the leg.
- L. The loin area on steers and heifers should be clipped flat on top and all of the hair left on the loin edge.

products you need to have the time to blow it in using a blower for the hair to really pop out (the more you blow the hair, the more volume it gets).



#### B. Tail

Today most fitters are leaving an animal's tail natural — just trimming it.

If you choose, you can put the tail up using a ratting comb, glue and a tail tie if needed. The completed symmetrical ball should be in a position to add balance to the animal. A tail too high will make the animal look heavyfronted.

#### C. Legs

Use spray glue to hold the leg hair in place to be clipped, but remember, the American Angus Association does not allow coloring agents, so use adhesive sparingly.

##### • Back legs

1. Bone the legs, spraying adhesive on one area at a time and pulling the hair up and forward with a scotch comb. Do not bone the legs too high on the hindquarter. The leg and the hindquarter must join as smoothly as possible. Pull the inside back legs below the hock forward and the back 1 1/8<sup>th</sup> of the leg backward creating a finned look, with the hair on the front and back below the hock meeting at a peak.
2. Clip the legs for the final effect using sheep heads with P7112 blades.

##### • Front legs

1. Bone the front legs below the knee forward

**ILLUSTRATION G**

**Hindquarter clipping (rear view)**

*The rear view is perhaps the most important view when evaluating cattle. It shows muscularity, muscle design, cleanness, condition, height and structural correctness in the animal.*

**A:** Hip hairs very important in order to give the animal a level hip.

**B:** The area close to the tail is trimmed very short in an outward motion leaving the most hair on the hindquarter edge. This adds thickness and dimension.

**C:** The area from the hock to the lower stifle is blended in to add muscle shape.

**D:** The outside hock area is trimmed very short to add to the appearance of balance and extension.

**E:** The inside hock area and twist can be shaved or trimmed short to add height.

**F:** The twist area can be trimmed and shaped to give the appearance of more muscle.

(inside and outside) using adhesive. This gives the animal the appearance of more bone.

#### D. Final preparation

1. In hard-to-hold areas, including the tailhead, you can use spray adhesive to glue the hair in place.
2. Put on the show halter.
3. Check the calf's fill. Offer water or hay if needed.
4. Before going to the make-ready area mist the animal with a show oil to add shine. Shows sponsored by the American Angus Association do not allow aerosol cans in the make-ready area, so have preparation complete at your chute.

#### AFTER THE SHOW

Make sure to wash out all fitting products and replace the oils in the calf's hair. For best results, wash within 24 hours. Do not forget to keep brushing and working with your animal to keep it looking good for your next show.

**associated***feed*



Jr. Livestock Camp



# Showmanship

1-800-540-FEED  
[www.associatedfeed.com](http://www.associatedfeed.com)



# ANIMAL SCIENCE FACTS

PUBLICATION NUMBER

Extension Animal Husbandry ANS95-002B

## Beef Showmanship

**Matthew C. Claeys**  
**Extension Livestock Specialist**

A good showman is a person that has a sense or knack for an effective presentation of an animal. Showmanship is the one area of exhibiting beef cattle over which you have the most control. In showmanship, you are judged on your abilities to control and present your steer or heifer to bring out its best characteristics. Advanced planning and hard work are the key to becoming a good showperson. Showing beef cattle not only generates enthusiasm and competition in the show ring, but also teaches valuable lessons that can be used in day to day life. These lessons include responsibility, learning about work and determination to reach a goal, winning graciously and losing with dignity.

### Start Early

Success in beef cattle showmanship starts at home. The first step is to halter break your calf. Properly put a rope halter on the calf and allow the lead rope to drag on the ground for two to three days. This makes the calf aware of the halter. Next, tie the calf for an hour, working up to three to five hours a day. During this time, brush your calf. This will assist in calming the animal and will allow it to become accustomed to you. With time, your calf will respond to your hand movements with a halter and showstick.

Training your calf to walk, stop, and set up easily will take time and patience. First, try to lead the calf to and from water and feed. Then begin leading the calf around the barnyard. Make sure the calf is accustomed to setting up with the halter and showstick. Practice in several short segments, not long drawn out sessions. After the calf is used to being walked and set up, practice having another person move in close to handle the calf with you at the halter. This will allow the calf to remain calm under a judge's close inspection.

### Using the Halter

The halter should be properly placed on the calf's head with the lead strap on the calf's left side. The halter strap that crosses over the muzzle or nose of the calf should be two inches from the eye. Rope halters and show halters can be adjusted for proper fit. Do not have the halter too big so that the nose cross piece is down by the mouth.

When leading, you should be on the calf's left side with the halter in your right hand. Your hand should

be six to twelve inches from the animal's head. With show halters, this is usually at the junction of the chain and leather strap. Firmly grab over the strap so that your thumb is closest to you, not under the strap. Your wrist is stronger this way and gives you more control over the animal.

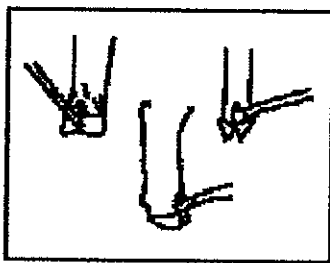
The strap length should be long enough for control, but not long enough to touch the ground. If the strap of the show halter can touch the ground, you or the calf may step on it and it becomes awkward to switch hands. Any extra strap may be folded and held in the right hand, or the extra length may be held in your left hand. If the strap is long, holding the extra length in your left hand is preferred. If the calf is spooked you will have two hands on the strap. **DO NOT** wrap the halter strap around your hand or fingers in order to prevent any injury.

### Using the Showstick

There are five basic uses for the showstick. They are to:

- assist in placing the feet
- calm the animal
- control the animal
- keep the top straight
- scotch-drive

When setting up your calf smoothly switch the lead strap from your right hand to your left hand. At the same time, switch your showstick from your left hand to your right hand. Slowly scratch your calf's belly a couple of times to help calm your animal and then set the feet in the appropriate position. Remember that you have two tools in your hands to set the feet. One is the halter, the other is your showstick. If you want a rear foot to be moved back, push backward on the halter and press (do not jab) the soft tissue where the hoof is split with your showstick (Figure 1). If you want a rear foot to move forward, pull forward on the halter and apply pressure with your showstick under the dew claw (Figure 1). Remember it is easier for the animal to put a foot back than forward. When the rear feet are too close together apply pressure to the inside of a leg just above the hoof and they should stand wider.

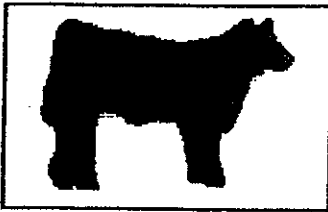


**Figure1: Proper use of showstick in placement of the feet.**

Front feet can be moved by using your boot or showstick to apply pressure in the previously mentioned areas while pushing or pulling with the halter in the desired direction you want the foot to move. Younger, less experienced showpersons will be safer if they use the showstick.

Placement of the feet depends on what view is provided to the judge and what makes the animal look its best. When the cattle are lined up side by side, in a straight line, the feet should be set at all four corners under the animal bearing their full share of the animal's weight. At this view, the judge is looking at the rear and front of the animal. When the cattle are lined up head to tail, the feet should be set as if a professional photographer is taking a picture. The rear feet should be staggered so that the farside foot is

slightly in front of the foot closest to the judge. Usually a heel to toe relationship works best (Figure 2). That means the heel of one foot is parallel with the toe of the other foot. The front feet should be set square or staggered less than the rear feet. The toe of the front foot away from the judge should be set back half the width of the hoof on the judges side. By setting the feet in this manner, you provide the judge with a perception of depth and thickness. It also makes it easier to correct a topline and rump structure.



**Figure 2: Set up when viewed on the profile.**

The showstick can also be used to correct a topline. If the top is weak and needs to be raised, simply apply pressure at the naval or the flank with the hook of the showstick. If the rump is steep and the loin is high, apply pressure to this area to bring it down. Then continue to scratch the animal's belly to keep it calm.

The showstick may also be used to help control your calf while walking and to "scotch-drive". While showing, always keep the point of the showstick down for safety reasons. While walking, the showstick is in your left hand at the handle or about one-third of the way down. This will allow use of the showstick as an additional control tool if needed. If the animal is moving too fast simply use the portion of the stick between your left hand and tip or hook end for tapping the nose. Never hit or beat, merely tap on the nose.

"Scotch-driving" is when your calf will not lead or walk and no one is around to help you get started. If this happens simply push forward on the halter with your right hand and tap the animal with the showstick on its side or rump. This will make the animal think someone is behind it and it should start to walk.

### **Using the Scotch Comb**

The scotch comb should be carried in your back pocket, or in a scotch comb sheath with the teeth toward you. This is for safety and courtesy reasons as you would not want someone else to get injured due to your equipment.

The scotch comb is used to groom the hair that may become messed up from the judge, another person handling your calf or another animal bumping it. The corner of the scotch comb may also be used to apply pressure to the loin or top to straighten the topline, like the showstick.

### **Showtime**

Prior to the show, inspect the show ring to find any high and low spots of the show ring surface. This will help you to avoid these areas when setting up your calf. When possible, position your animal so that the front feet are placed on higher ground than the rear feet.

Dress neatly. Leather boots should be worn for safety and appearance reasons. If the calf steps on your

foot, the calf's foot will slip off a leather boot much easier than a tennis shoe, with less opportunity for injury. Wear nice jeans or slacks. Faded bluejeans look less professional and should not be worn.

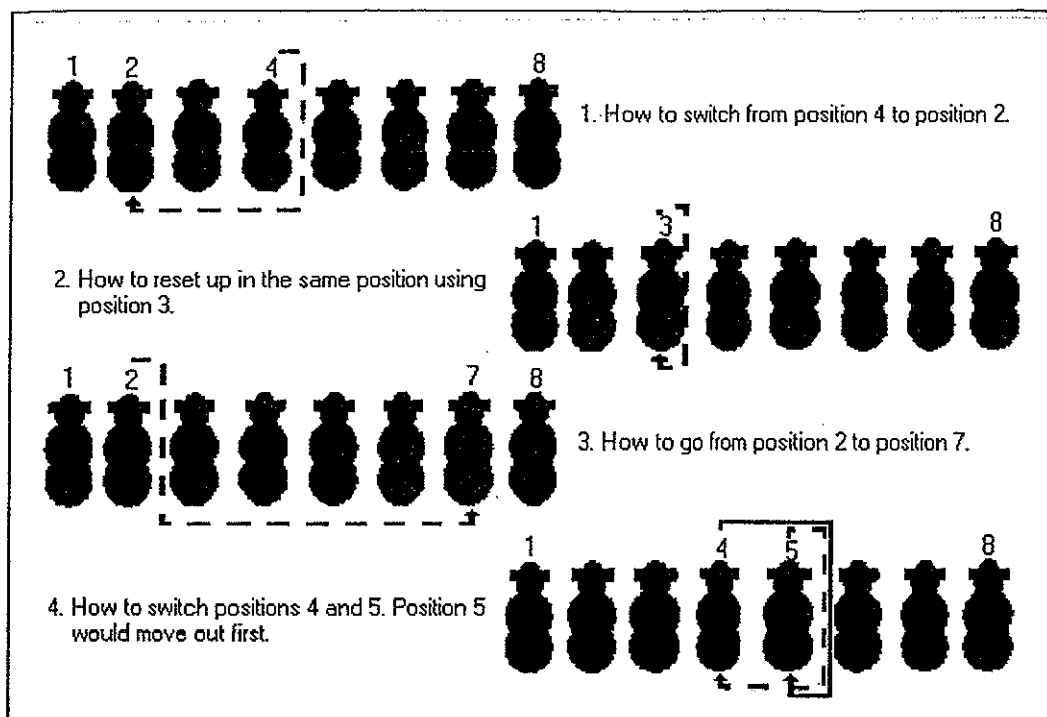
Wear a nice button-down or polo shirt that is pleasing to the eye. No camouflage shirts or T-shirts should be worn. Also, tuck your shirt in and wear a belt for neatness. Leave hats back at the grooming area. Hats may distract the judge's concentration. Planning and neat appearance will help you to gain success.

Enter the show ring promptly when your class is called and have the proper equipment. Be sure to have the correct exhibitor number, showstick, and scotch comb. If you are not in the first class, it is helpful to watch a class or two so that you know where to line up and how the classes will move through the show ring.

Generally cattle are lined up side by side to start a class. When pulling into line, look where you will be and head into that position. Do not simply follow the person in front of you as this usually ends up in an "S" configuration. You can end up brushing against the calf that was in front of you as you pull into line. When pulling into line, "check" your animal a few feet before reaching your destination to slow the animal. To "check" your animal, simply lift up slightly on the halter so that the animal knows you are about to stop. As you walk into the ring, line up where the ring person indicates. If you are third or fourth in the ring, line up even with the other calves, leaving three or four feet on both sides of your animal. This allows ample room for all exhibitors to set up the calves. Smoothly, yet quickly, get your calf set up as discussed earlier with the head held high. Be alert, keep a close eye on your calf, keep the feet set square, and know where the judge is located. If your calf is not set square and the judge is nearby, set your calf up. Most judges will wait for you to present your calf in the best way. Always allow the judge to see the view he or she is seeking. Try not to get between the judge and the animal. When it is time to walk the cattle, move as the judge or ring person instructs, either left or right. Most likely, you will pull the cattle up to the rail, turn left, go three fourths of a circle, and walk right behind the other cattle in the side by side line. If the exhibitor in front of you is having trouble, help them. Tap the animal's rump with your showstick or preferably put your showstick in your right hand and twist the tail of the calf in front of you with your left. Being courteous to others is a must.

When walking, let the animal walk out freely. Stop in a straight line head to tail (profile). Remember to "check" your calf and then stop by lifting the head. Allow four to six feet between your calf and the one in front. This will allow the judge space to move freely around the cattle and help to prevent your calf from mounting the other calf. Position the feet as discussed earlier for the profile and keep the topline straight with the calf's head up. Locate the judge and calmly waft. Do not "saw" your animal in half with rapid stick movement while wafting for the judge. Use slow deliberate strokes with the showstick. The judge may handle the cattle and ask you a few questions. Do not make noises or rattle the chain of the halter.

As the judge moves around your animal, move a half step back to allow the judge the full view he or she seeks. Be prepared to answer questions about your animal: weight, birthdate, sire, dam, pregnancy status of your heifer, feeding program, parts of the animal, yield grade, quality grade, and where retail cuts of meat come from. If your animal has not moved and the judge has gone to the next animal, use the scotch comb to fix the hair that has been messed up. If the animal has moved or gotten out of line, pull your animal out in a clockwise circle in the ring and move the animal back into line. Set the animal up and then fix the hair. It is more important to first have the animal set correctly and looking its best as the hair may be minor compared to how the animal is standing.



**Figure 3: Switching positions.**

Be alert and aware of the judge. Look for a sign or motion to be pulled into line for the placing. This may be another profile line or side by side. As the judge pulls cattle from the profile line, empty spaces will occur. If two or more spaces between cattle become empty, move forward in the line. Remember your spacing and set your calf up at its best. By moving forward and filling the empty spaces, you help the judge by making it easier to make comparisons. Once pulled into a side by side line you are nearing the end of the class, but it is not over. Pull into the side by side line as discussed earlier, stay alert and set the animal up. Sometimes positions may be switched. Shown above are some situations that may occur (Figure 3). Please note that you pass back through the same hole that you left and to the proper position.

If you are positioned up to a rail, do not turn around in the line. Back your animal out by pushing back on the halter with your left hand and applying pressure with your right at the point of the shoulder. Then pull into the line at the instructed position.

When the judge starts his reasons the class is over, but your job is not. You should continue to work hard and display good sportsmanship. Leave the ring in an orderly manner as instructed by the ringperson and pick up your awards.

### **Exhibitor Courtesy and Sportsmanship**

Remember to keep straight lines so that the judge can compare all the animals. If you are blocking the view of another animal and have space, move so that the judge can see all animals. However, if you are the one hidden, it is your responsibility to be where your animal can be seen. Do not rely on the other exhibitor as he or she may not have room to move. On the profile, pull back in line where space is available. This may be at the end of the line. Avoid bumping, crowding, or hitting other animals. If your animal becomes nervous or unruly, act like a professional. Be patient, remain calm, and never get discouraged or lose your temper. Finally, congratulate the class winners and those that stood ahead of

you. Remember this is a learning experience. Leave the ring with your head held high, knowing that you have given this project your best effort. Learn from your mistakes, watch other showpersons, and improve your skills for the next show. You are a winner by trying and participating in a worthwhile fun activity.

*Reviewed by Darwin G. Braund and Raymond W Harvey, Department of Animal Science, North Carolina State University.*

---

*Distributed in furtherance of the Acts of Congress of May 8 and June 30, 1914. Employment and program opportunities are offered to all people regardless of race, color, national origin, sex, age, or disability. North Carolina State University, North Carolina A&T State University, U.S. Department of Agriculture, and local governments cooperating.*

---

Return to  
[Extension Animal Husbandry Home Page](#)  
[NCSU's Department of Animal Science's Home Page](#)  
[North Carolina State University's Home Page](#)

---

*Last Modified Tuesday, 01-Apr-2003 12:21:30 EST  
Lori McBryde, Department of Animal Science.*

---

**associated***feed*



Jr. Livestock Camp



# Appendix

1-800-540-FEED  
[www.associatedfeed.com](http://www.associatedfeed.com)

## Cattle Wrap-Up Questions

### Cattle Questions?

1. What is the name of the product that is a great source of fiber and good filler?  
a. Rolled Corn    b. Power Performance Pellet    c. Show fill    d. Cottonseed
2. What is the ShowMaker Grower / Finisher medicated with?  
a. Lasalocid    b. Bovatec    c. Monensin    d. Tylosin
3. Which of these beef feeds has a withdrawal period?  
a. ShowMaker Heifer/Steer Developer  
b. ShowMaker Beef Grower/Finisher  
c. Sunglo Explosion  
d. None of the Above
4. What three things are needed to get you to the winner's circle?  
a. Good Genetics, Good Management and Good Feed  
b. Expensive Genetics, Good Management and a Good Fit Job  
c. Out of state genetics, Good Feed and Water  
d. Good Genetics, Good Showmanship and Good Feed
5. What is the difference between the grower/ finisher and the developer?  
a. Grower/Finisher is lower protein and higher fat  
b. Developer is only for heifers  
c. The Developer has a withdrawal period  
d. The Grower/Finisher is a pellet and the Developer is a textured feed
6. What ShowMaker product contains 99% fat?  
a. Bloom    b. Power-up    c. Power performance pellet    d. Showdown
7. What direction should you brush the hair on a steer?  
a. Downward    b. Upward    c. Forward    d. Diagonal
8. Which of the following tools would be used to fit a steer?  
a. Scotch Comb    b. Card    c. Cane    d. neck chain
9. What is the active ingredient in the Sunglo Explosion product?  
a. Monensin    b. Ractopamine    c. Sodium Nitrate    d. Bovatec
10. Which one of this terms is used in cattle?  
a. Jowl    b. Rack    c. Rib eye    d. Boston Butt



# ShowMaker Math Lesson

## Cattle

You bought a project calf that weighed 650 lbs. You weighed the steer 100 days later and it weighed 1000 lbs. You used 1800 lbs of ShowMaker Beef Grower/Finisher. It cost you 9.50 per 50 lb sack.

1. What was the Average daily gain?
2. What was the average daily feed intake?
3. How many pounds of feed did it take per pound of gain?
4. What is your cost of feed per pound?
5. What is your feed cost per day?
6. What is your total feed cost for the project?

# associated feed

## Feed Identification

1. \_\_\_\_\_
2. \_\_\_\_\_
3. \_\_\_\_\_
4. \_\_\_\_\_
5. \_\_\_\_\_
6. \_\_\_\_\_
7. \_\_\_\_\_
8. \_\_\_\_\_
9. \_\_\_\_\_
10. \_\_\_\_\_

### Grains

Crimped Oats  
Whole Cottonseed  
Beet Pulp  
Rolled Corn  
Rolled Barley  
Soyhull Pellets  
Whole Oats  
Wheat Millrun  
Soybean Meal  
Distillers Grain  
Alfalfa Pellets  
Canola Pellets  
Whole Corn  
Salt  
Rice Bran  
Almond Hulls  
Dried fat  
Whole Oats  
Fish Meal

## Hay Identification

1. \_\_\_\_\_
2. \_\_\_\_\_
3. \_\_\_\_\_
4. \_\_\_\_\_
5. \_\_\_\_\_

Alfalfa  
Oat  
Timothy  
Grass  
Fescue  
Bermuda grass  
Orchard grass  
Alfalfa grass mix  
Oat and Pea



