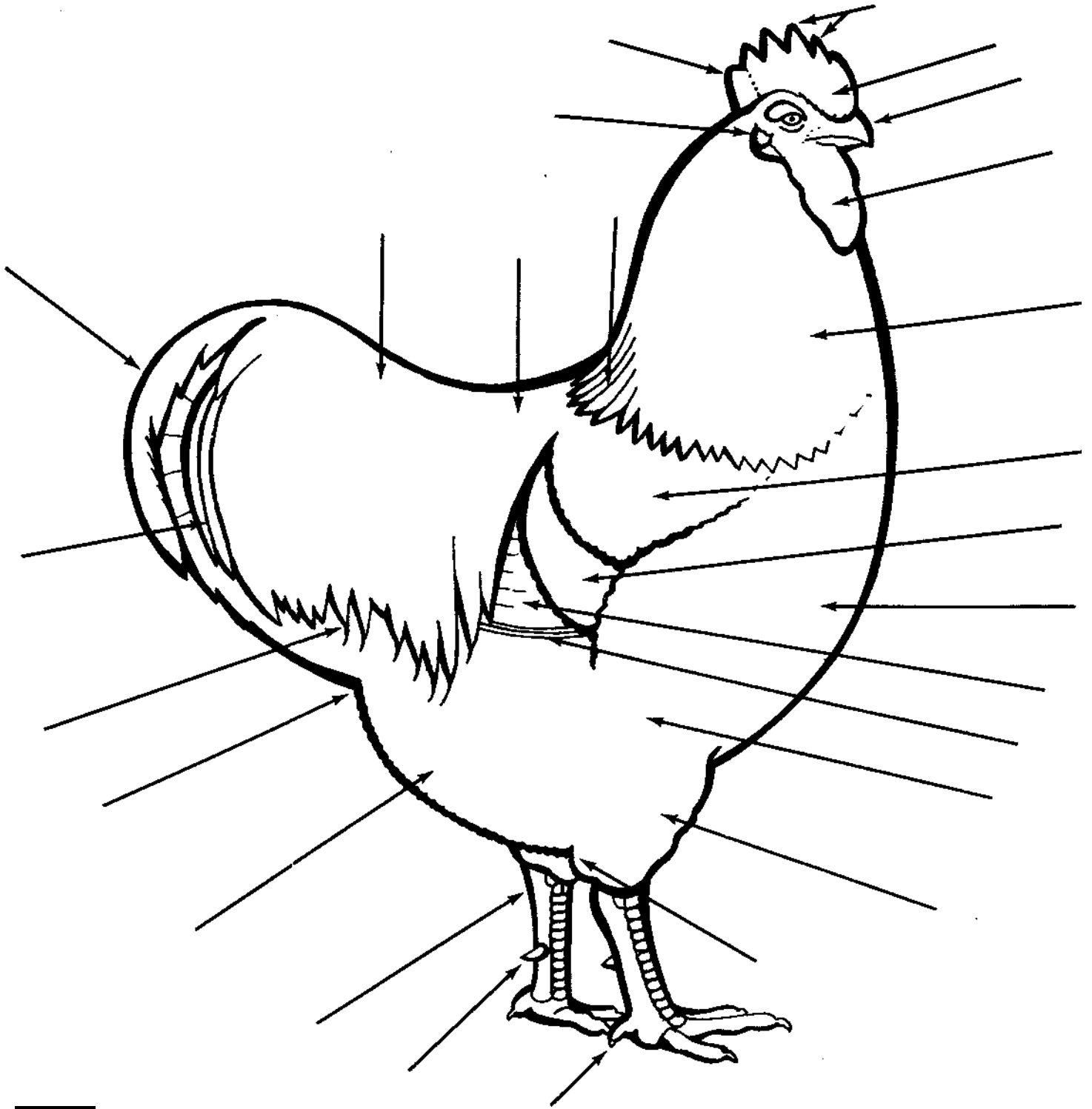


POULTRY...PARTS IDENTIFICATION



Agriculture and Natural Resources
University of California Cooperative Extension
4-H 2036



BREAST **WATTLES**
BEAK **COMB**
CAPE **EAR** **BLADE**
POINTS **SPUR**
CLAW **SHANK**
HOCK **THIGH**
FLUFF **BACK**
BODY **PRIMARIES**
SADDLE **SICKLES**
LESSER SICKLES
HACKLE
SADDLE FEATHERS
VENT
WING-BOW
SECONDARIES
WING-BAR