

Coachella Valley Pitahaya Research

Jose Luis Aguiar, Ramiro Lobo, Sam Aslan,
Milton McGiffen Jr., Robert Kreuger

University of California

Agriculture and Natural Resources *Making a Difference for California*

HEALTHY FOOD SYSTEMS • HEALTHY ENVIRONMENTS • HEALTHY COMMUNITIES • HEALTHY CALIFORNIANS

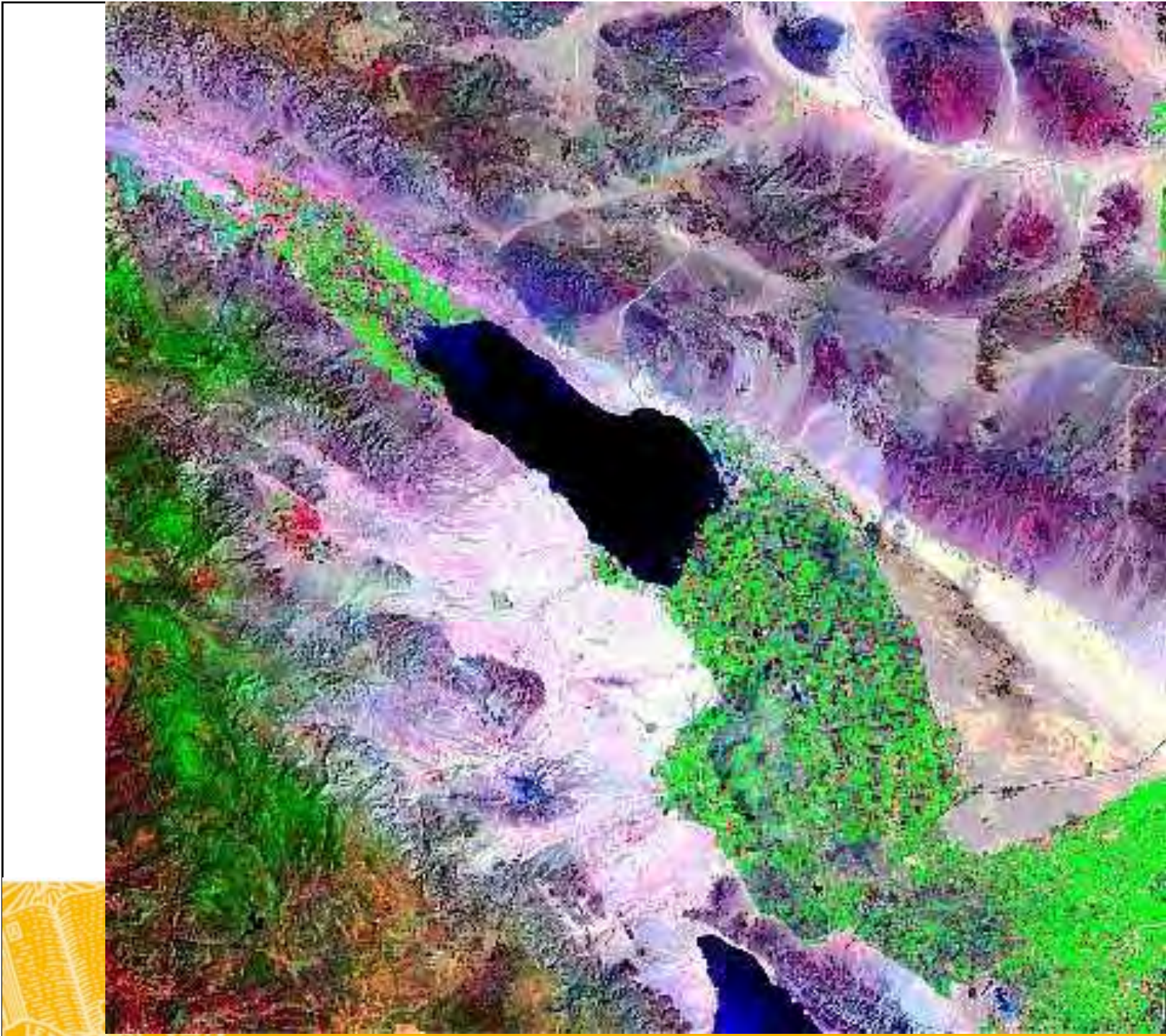
Can Pitahaya be grown in the Coachella Valley?

- ✓ Exposure to high heat
- ✓ Exposure to frost

University of California

Agriculture and Natural Resources *Making a Difference for California*

HEALTHY FOOD SYSTEMS • HEALTHY ENVIRONMENTS • HEALTHY COMMUNITIES • HEALTHY CALIFORNIANS



Coachella
Imperial
Mexicali

Varieties

- 14: Haley's Comet
- 15: Physical Graffiti
- 9: Valdivia Roja
- 18: Seoul Kitchen
- 3: Orejona

Observation Varieties

- 6: San Ignacio
- 1: Cebrea
- 5: Sin Espinas
- 10: Bien Hoa Red

All cuttings supplied by Ramiro Lobo

University of California

Agriculture and Natural Resources *Making a Difference for California*

HEALTHY FOOD SYSTEMS • HEALTHY ENVIRONMENTS • HEALTHY COMMUNITIES • HEALTHY CALIFORNIANS

Methods and Materials

Varieties selected for heat tolerance

4 Varieties, 5 replications:

3 foot plant spacing,

5 plants per plot

Drip irrigation

Planted 4-11-2012

University of California

Agriculture and Natural Resources *Making a Difference for California*

HEALTHY FOOD SYSTEMS • HEALTHY ENVIRONMENTS • HEALTHY COMMUNITIES • HEALTHY CALIFORNIANS

Trellising

Grape Posts

Posts are 2 feet deep and 6 feet above ground

Posts are 18 foot center to center

Grape wire is put at 1 foot spacing up the post

Rows are 12 foot center to center

University of California

Agriculture and Natural Resources *Making a Difference for California*

HEALTHY FOOD SYSTEMS • HEALTHY ENVIRONMENTS • HEALTHY COMMUNITIES • HEALTHY CALIFORNIANS

Planted 4-11-2012



May 16, 2012



Sunburn Rankings May 16, 2012

Least to most tolerant:

9: Valdivia Roja < 3: Orejona < 18: Seoul Kitchen <14: Haleys Comet <15: Physical Graffiti

5-16-13 Survival

9: has 12% survival rate

3: has 40% survival rate

18: 28% survival rate

14: has 28% survival rate

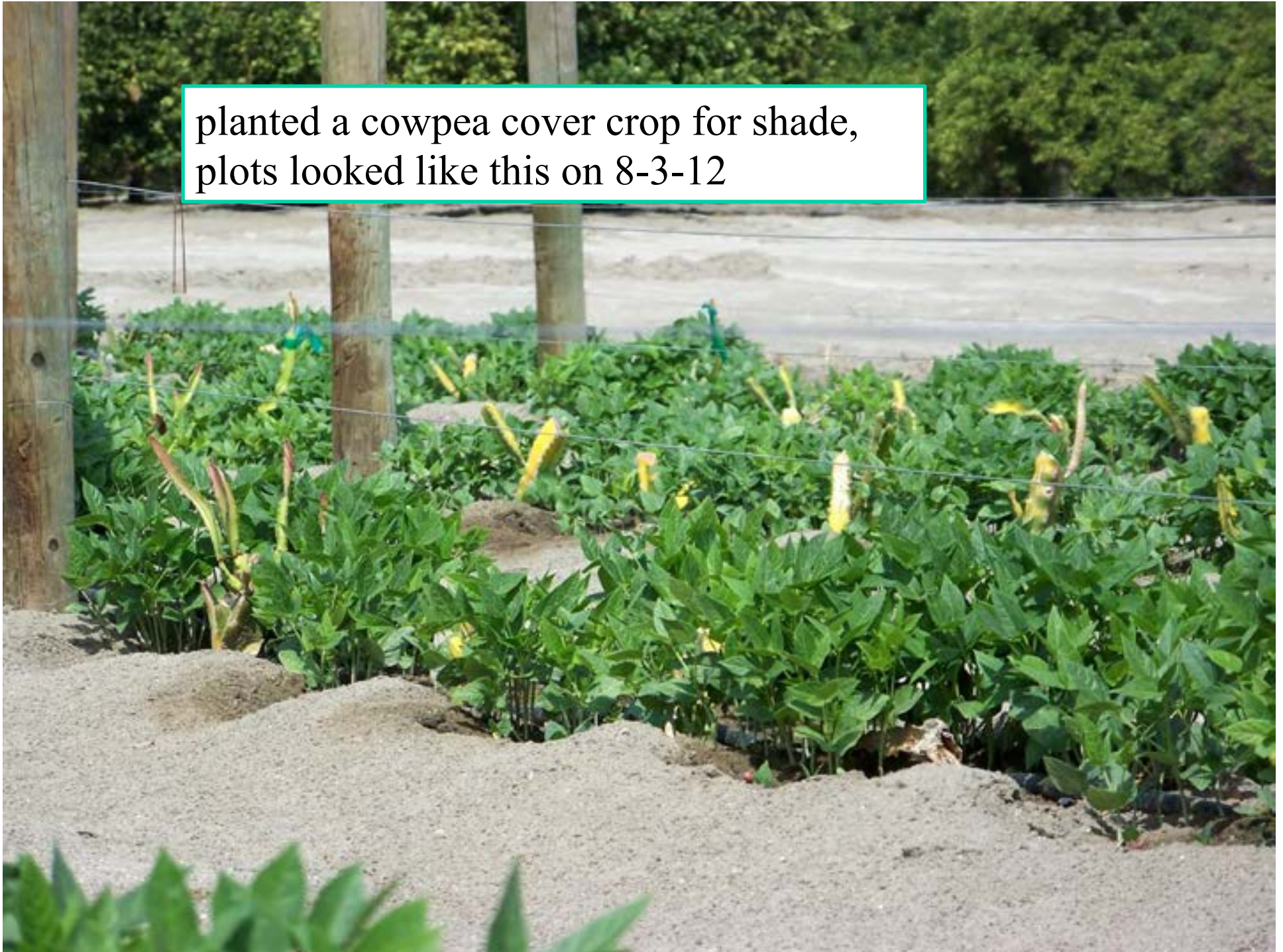
15: has 80% survival rate

University of California

Agriculture and Natural Resources *Making a Difference for California*

HEALTHY FOOD SYSTEMS • HEALTHY ENVIRONMENTS • HEALTHY COMMUNITIES • HEALTHY CALIFORNIANS

planted a cowpea cover crop for shade,
plots looked like this on 8-3-12



March 19, 2013 plot pictures

University of California

Agriculture and Natural Resources *Making a Difference for California*

HEALTHY FOOD SYSTEMS • HEALTHY ENVIRONMENTS • HEALTHY COMMUNITIES • HEALTHY CALIFORNIANS



Haley's Comet

Physical Graffiti



Seoul Kitchen



Valdivia Roja



Orejona



Can Pitahaya be grown in the Coachella Valley?

University of California

Agriculture and Natural Resources *Making a Difference for California*

HEALTHY FOOD SYSTEMS • HEALTHY ENVIRONMENTS • HEALTHY COMMUNITIES • HEALTHY CALIFORNIANS

Temperature Range


Ideal growing temperature for dragon fruit is 65 to 77 degrees.

Florida Extension reports that plants are subject to freezing or frost, and can tolerate warm climates where temperatures do not exceed 100F.

University of California

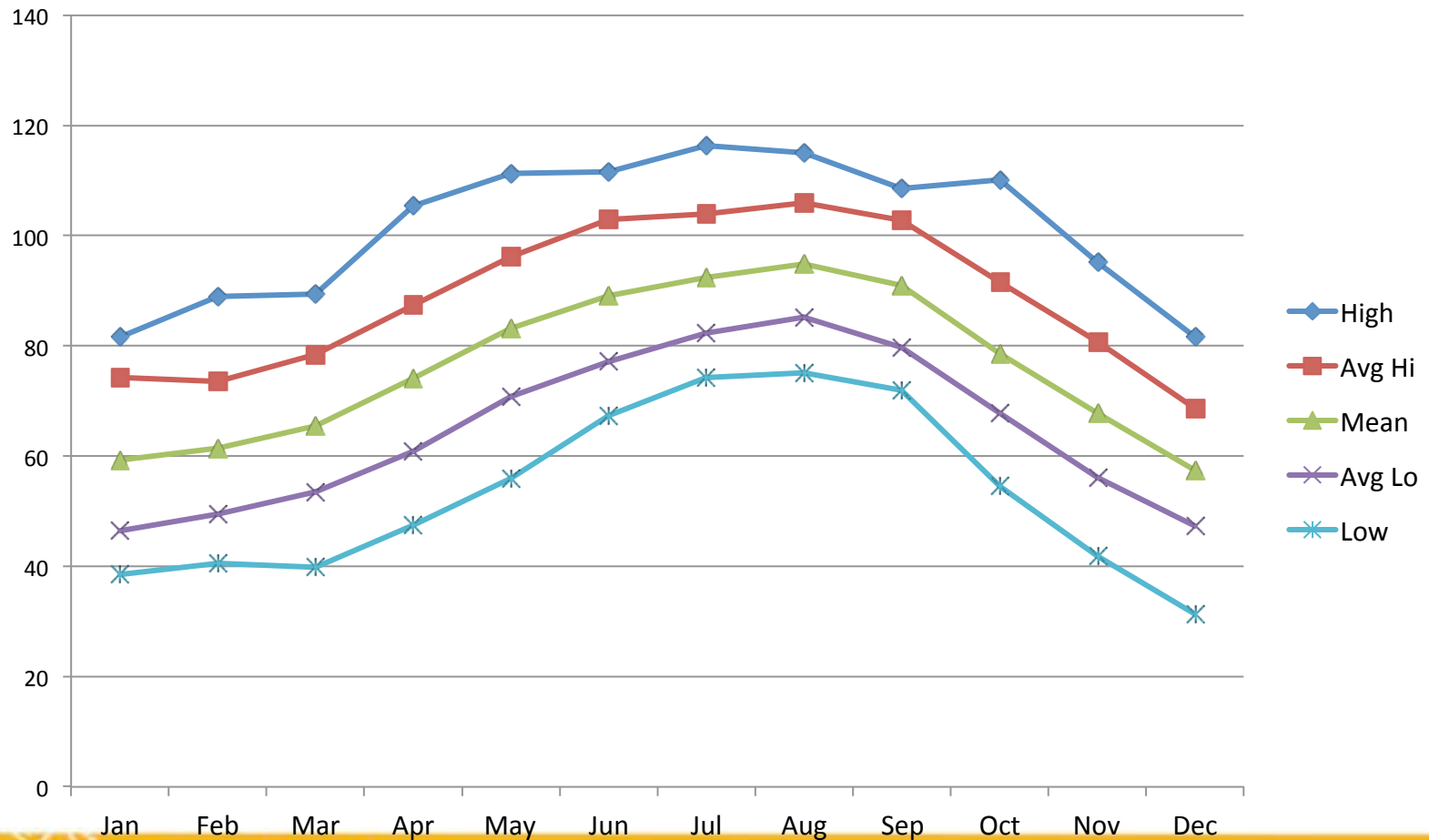
Agriculture and Natural Resources *Making a Difference for California*

HEALTHY FOOD SYSTEMS • HEALTHY ENVIRONMENTS • HEALTHY COMMUNITIES • HEALTHY CALIFORNIANS



First flower,
Aborted, no fruit

2012 Average Temperature

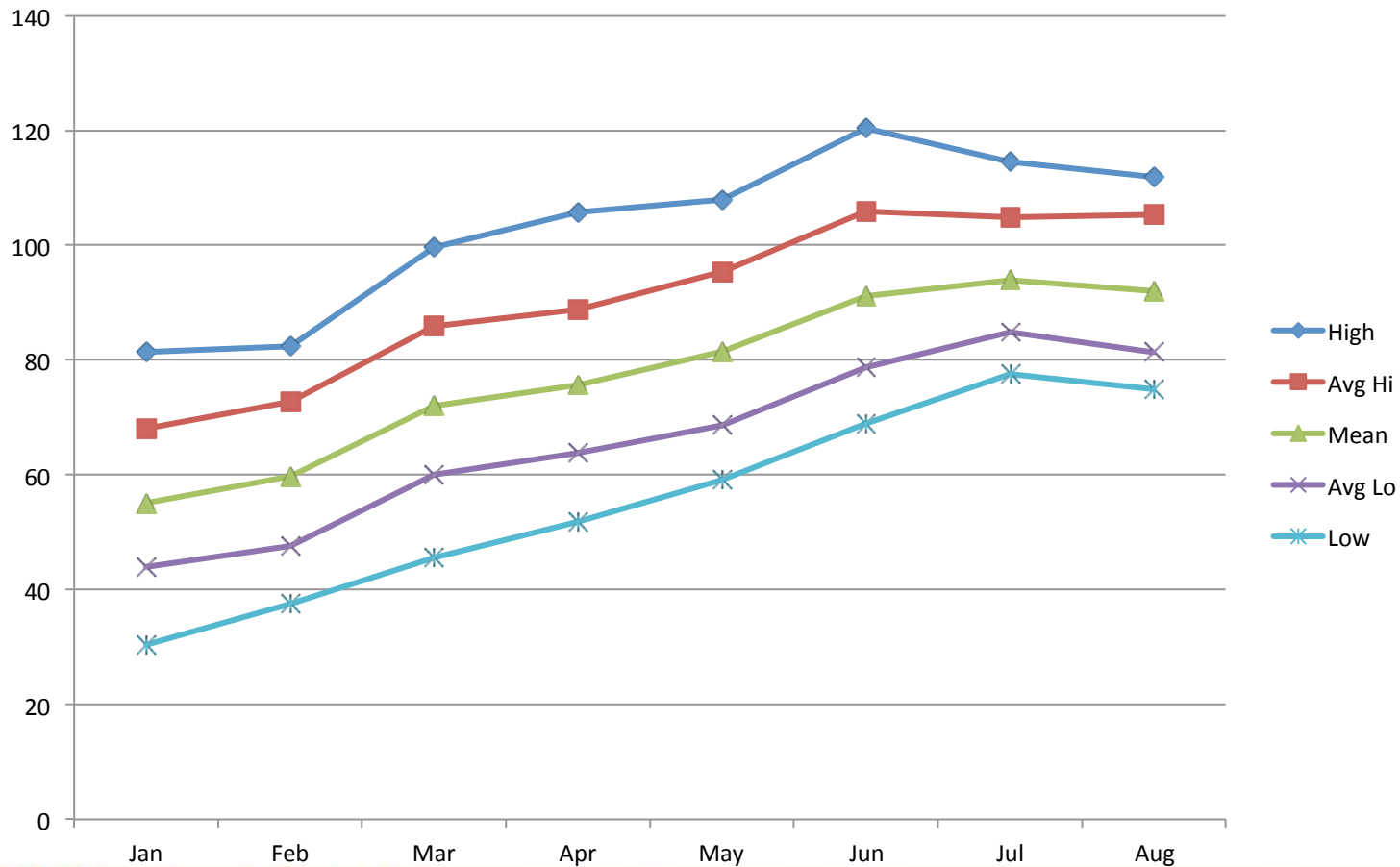


University of California

Agriculture and Natural Resources *Making a Difference for California*

HEALTHY FOOD SYSTEMS • HEALTHY ENVIRONMENTS • HEALTHY COMMUNITIES • HEALTHY CALIFORNIANS

2013 Average Temperature



University of California

Agriculture and Natural Resources *Making a Difference for California*

HEALTHY FOOD SYSTEMS • HEALTHY ENVIRONMENTS • HEALTHY COMMUNITIES • HEALTHY CALIFORNIANS

Can Pitahaya be grown in the Coachella Valley?

They will need to be grown under very high shade cloth for

part of the growing season

Begin with larger cuttings so that they establish faster

Irrigation has been problematic, too little the plants dry out,

To much the plants rot

University of California

Agriculture and Natural Resources *Making a Difference for California*

HEALTHY FOOD SYSTEMS • HEALTHY ENVIRONMENTS • HEALTHY COMMUNITIES • HEALTHY CALIFORNIANS